



APRIL – MAY 2023

THE PARISH OF BARDSEY WITH EAST KESWICK

Village News

Celebrating Easter and the
Coronation of King Charles III



Contents

From the Vicarage	3
Parish Church Services	4
From the Register	5
Fairtrade Easter Eggs	5
East Keswick Village Hall AGM	6
East Keswick WI Report	6
Bardsey Bowling Club	6
Bardsey cum Rigton WI Update	7
Winter Warmers Community Lunches	8
Bardsey Parish Council Report	9
Bardsey Village Hall AGM and Annual Parish Meeting	9
East Keswick Methodist Church Services and Update	10
Churches Together	10
A Village Project for the Coronation - Help Needed	11
Bardsey Arts	12
Christian Aid Week	12
Can I Come for a Sleepover? Guide Dogs Need Foster Homes	13
Bardsey with Collingham Mothers' Union	14
East Keswick History Group	14
The Children's Society Thank You	15
Easter Egg Hunt	16
Artists Around Wetherby - Open Studios	16
Eco Chat: What's the Buzz About Bees?	17
Climate Sunday	17
East Keswick Wildlife Trust	18
Scarcroft Craft Market	19
Bardsey Tennis Club	20
Bardsey & East Keswick Running Club	20
Diary Dates	21
Village Groups and Facilities	22
Trade and Services Directory	23

From the Vicarage



Angela Hannafin

Welcome to our April and May edition of the Parish News. As ever, I want to thank all of the contributors to this magazine, and all of the amazing volunteers who work so hard to deliver it so you can read it.

It's not been a particularly easy few months for our church communities. Both have been impacted by Storm Otto, with trees, branches and gravestones being affected. The wall near All Hallows has become very unsafe and is currently cordoned off. We've also had a problem with the gas at All Hallows, meaning we have no heating at the moment until new pipes are laid. If things go in threes, that's our lot! As All Hallows is a Grade 1 listed building, repairs involve a lot of paperwork and have to be authorised through the Diocese. It's not like home repairs - it does take a lot longer. All of this has taken place during a time when we've tried to cut down on fuel bills by heating only one building per Sunday. So if you've felt confused about which church building you're supposed to be in at the moment, it's understandable! Do look at the website and contact the Parish Office if you're not sure where the services are.

However, there is also a lot to be thankful for. We have more than one church building, so whilst some early services have remained at All Hallows, we have been

meeting more at St Mary Magdalene. Our times of joint services have allowed folk to deepen relationships, and we've decided to keep going with a monthly first Sunday Joint Service (starting in June).

These challenges remind us that all communities pull together in times of need, and that we're more than the sum of our buildings.

"Try to find the good in every situation", as someone recently reminded me, and even times of adversity can be opportunities for growth and discovery. The apostle Paul encouraged people to see difficult times as 'light and momentary troubles'. Considering that many of those people were being persecuted for their faith, it was an odd thing to say but he was reflecting on the need for collective perspective and perseverance. We'll get there when we all pull together.

With every blessing

Angela

Gravestone Damage

The recent Storm Otto has severely impacted some of the gravestones in the lower churchyard area at All Hallows. If you or your family have loved ones with gravestones which are located in this area, please do look in the churchyard. If there is any damage to your gravestone, please get in contact via the Parish Office.

Parish Church Services

DATE	LOCATION	SERVICES
SUN 2 APR	St Mary Magdalene	10.00am Palm Sunday
MON 3 APR	St Mary Magdalene	7.00pm Holy Week Reflections
TUE 4 APR	St Mary Magdalene	7.00pm Holy Week Reflections
WED 5 APR	St Mary Magdalene	11.00am Mid-week Communion 7.00pm Holy Wednesday Service
THU 6 APR	St Mary Magdalene	7.00pm Maundy Thursday Service
FRI 7 APR	St Mary Magdalene	2.00pm Good Friday Reflections
EASTER SUNDAY	Bardsey	6.15am Sunrise Service
	All Hallows	8.00am Holy Communion
	9 APR	St Mary Magdalene
SUN 16 APR	St Mary Magdalene	10.00am Morning Worship
SUN 23 APR	All Hallows	8.00am Holy Communion
	St Mary Magdalene	10.00am Holy Communion
SUN 30 APR	St Mary Magdalene	10.00am Joint Service - Holy Communion
WED 3 MAY	St Mary Magdalene	11.00am Holy Communion
SUN 7 MAY	All Hallows	8.00am Holy Communion 10.45am Holy Communion
	St Mary Magdalene	9.15am Holy Communion
SUN 14 MAY	All Hallows	8.00am Holy Communion 10.45am Family Service
	St Mary Magdalene	9.15am Family Service
SUN 21 MAY	All Hallows	8.00am Holy Communion 10.45am Morning Worship
	St Mary Magdalene	9.15am Morning Worship
SUN 28 MAY	All Hallows	8.00am Holy Communion 10.45am Holy Communion
	St Mary Magdalene	9.15am Holy Communion

Venues may change if repairs at All Hallows are not completed in time. Please check on the website for the latest situation www.bardseyeparish.com

From the Register

We welcome those who have been baptised

WILLIAM JAMES

Sunday 12 March, Saint Mary Magdalene

MADELEINE NEWBURN

Sunday 12 March, Saint Mary Magdalene

FRANCESCA NEWBURN

Sunday 12 March, Saint Mary Magdalene



Fairtrade Easter Egg Facts

Did you know that behind every luscious chocolate treat we devour throughout the year, there are six million people globally who depend on growing cocoa for their livelihoods. The **Fairtrade** foundation has breathed a new lease of life into these cocoa farming communities.

Cocoa can only grow well in tropical environments between 10°N and 10°S of the Equator. The ideal climate for growing cocoa is hot, rainy, and tropical, with lush vegetation to provide shade for the cocoa trees. Ghana and Côte d'Ivoire are the top selling countries.

It takes around five years for cocoa trees to yield pods at peak production level and they can continue at this level for 10 years. But for all this hard work, cocoa farmers gain very little from a very profitable global cocoa trade.

Most cocoa farmers earn less than 90p a day. Poverty and its many related issues, such as child labour, is the key challenge faced by cocoa growing communities. With **Fairtrade** sales farmers receive the **Fairtrade Premium** which they spend on improving the quality and productivity of their farms and in so doing improve their income

Education is key to the future of cocoa farming communities. **Fairtrade Africa** currently trains cocoa farmers in financial management, governance, good agricultural practices, gender equality and child labour.

Fairtrade chocolate makes up 12% of chocolate sales in the UK. The trend for **Fairtrade**-certified cocoa treats is growing and there are lots of different types of chocolate products bearing the **Fairtrade** mark, including premium, conventional, organic, gluten free and vegan options.

So this Easter why not make sure your Easter Egg is **Fairtrade**.

All Halls and St Mary Magdalene are Fairtrade churches.

East Keswick Village Hall AGM

All East Keswick residents are warmly invited to the Village Hall AGM on **Monday 17 April at 7.30pm** in the Verity Room.

Please come and show your support for this excellent village amenity. It's your village hall so your views and thoughts on its future really do count.

East Keswick WI Update

Elizabeth Ward



Unfortunately the February meeting was cancelled.

In March Susanne Lifford spoke of her holidays in Laos, where she and her husband support a charity helping children to speak English; their chance of a brighter future. This beautiful mountainous country, with many Buddhist monasteries, is littered with unexploded bombs from the Vietnam war, and much time is spent locating them.

11 April: "Suffragettes", by Rita Saville Stone

Competition: A photo dated between 1903 and 1918

9 May: "Reflexology", by Gemma Mercer

Competition: Any type of footwear

Meetings are held at **2.00pm** on Tuesdays in East Keswick Village Hall. Visitors are always welcome and we look forward to seeing you.

Bardsey Bowling Club

The green is now open for play, with the league matches commencing during early April.

We welcome new members - ladies particularly. The club has introductory offers available, which include free loan of equipment - all you need are flat soled shoes and enthusiasm!



Two club based, qualified coaches welcome small groups or individuals to come along and try the game. If you prefer a one-to-one taster, that can be arranged. Members are able to play just socially or progress to playing for a league team.

Looking forward to the Coronation in May plans are in hand for a family/social/fun bowling event during the Bank Holiday weekend. Watch local advertising and social media for details.

For further information see our website and Facebook page or contact club secretary Andy on **07910 19527**

Bardsey cum Rigton WI Update



Brenda Sanderson

I am delighted to report that at each meeting visitors are coming along to see and hear what WI is about. Our membership is increasing and the average age decreasing, which is very encouraging.

February arrived and our own Marjorie Wilson, shared her knowledge of volcanoes, with the aid of slides, to an intrigued audience. Time to discuss and choose a resolution to go forward to the National AGM, to be held in Cardiff in June. The one chosen by our members was 'Online gambling harm: time for action'.

March arrived and also the snow but this did not deter an excellent audience for Malcolm Johnson, who reminding us of world events, clothes, music, cinema and games of the 1970's.

Golden Plover

21 members from our five Institutes enjoyed walking around Roundhay Park on a bright day in February and afterwards took advantage of lunch in The Roundhay Fox. A very companionable affair. Our next get together is on **26 April** when we will be visiting Langlands Garden Centre for a hanging basket demonstration. Tickets will be on sale shortly at £5, to include refreshments.

12 April

This meeting will be different again to previous events. We will learn about the

'Street Angels' from Paul Blakey and the good work that is done in our towns and cities late at night. The competition is for 'an angel'. Subscriptions for the year are also due at this meeting, but are definitely the best value for money. Eleven meetings a year, with refreshments, super speakers and most of all getting to know new people!

10 May

John Crossham is doing a 'balloon workshop' and the competition is 'party fun'. We thank our Programme Secretary for being so imaginative with our speakers.

All our meetings are on the second Wednesday of each month, in Bardsey Village Hall commencing at 7.30pm.

Coffee Morning for Ukraine and the Turkish and Syria Disaster Fund

The Committee decided that money needed to be raised more than ever this year and were backed one hundred percent by members. So, a coffee morning was organised and eventually took place on **11 March**. The cake stall was magnificent, the raffle beyond our wildest dreams and tea and coffee and home made biscuits were enjoyed. Thanks to our members, East Keswick WI and the Bardsey community over £2,000 was raised.

Well done everyone.





Winter

WARMERS

Community Lunches

Callister Hall, Bardsey

12.45-2.00pm

On the second Tuesday of the month

Join us for a soup and pudding lunch, open to anyone who lives in Bardsey and East Keswick, to engage & connect with local people, and help bring the community together.

Contact the Parish Office if you would like to come along;

T: 01937 574273

E: Bardseyparishchur@btinternet.com

NO CHARGE BUT DONATIONS GRATEFULLY RECEIVED
(GOING TOWARDS ST AIDAN'S, HAREHILLS, FOODSHARE PROGRAMME)

Bardsey-cum-Rigton Parish Council Report

Cllr. Linda Flockton

Report from meetings on 16 February and 16 March



HIGHWAYS UPDATE

A58 - Pavement from Rigton Bank to Mill

Lane: This has been cleared to a certain extent and LCC have promised to send out a service sweeper to remove the detritus and loosen the verge creep. They will also remove loose cut branches as far as practicable from the grass verge.

Church Lane/Smithy Lane/Blackmoor Lane:

The path is very narrow and has been reported to LCC who are looking into what can be done to improve it.

Damaged Bardsey boundary sign on the east side of the A58: This was reported to LCC but no action taken as yet. We have also reported a number of leaning road signs, which probably happened during the recent high winds, both are being followed up.

Potholes and fly-tipping: There are a number of large Potholes which appear from time to time in the village and incidents of fly-tipping can be reported too, directly to Leeds City Council on **01132 224407** or visit **www.leeds.gov.uk**

PARK FIELD

It was reported that the old and broken benches in Park Field have now been replaced with new benches made from recyclable plastic materials. They have the appearance of wooden benches and will be more durable and last longer than the previous ones. A grant has been obtained towards the cost of the benches.

The next meeting will be held on **Wednesday 19 April** at 8pm in Bardsey Village Hall, following on from our Annual Parish Meeting which begins at 7.30pm.

The following meeting will be on **Wednesday 17 May** at 7pm in Bardsey Village Hall Committee Room.

The first ten minutes will be set aside to deal with any issues raised by residents.

Full minutes and other information is published each month on our Village website **www.bardseyvillage.org.uk**

Bardsey Village Hall AGM

Wednesday 19 April

All Bardsey residents are invited to the Village Hall Management Committee (VHMC) AGM, at Bardsey Village Hall, starting at **7.00pm**

The Annual Parish Meeting

All Bardsey residents are most cordially invited to attend the Annual Parish Meeting of the Parish Council starting at **7.30pm**, immediately after the VHMC AGM.

This is your opportunity to receive an update on the work undertaken by the Parish Council throughout the year.

Do come along and enjoy a glass of wine with us. The Annual Parish Meeting will be followed, at around **8.00pm**, by a regular meeting of the Parish Council, the first ten minutes of which is open to residents who wish to raise any concerns.

East Keswick Methodist Church

SERVICES

All services are at 10.30am unless otherwise stated.

2 April

United service at Collingham

7 April, 9.30am

Good Friday readings and preparation of the cross

9 April

Easter Sunday, Eileen Clarkson (with Collingham)

16 April, 10.00am

United service at Wetherby

23 April

Heather Shipman

30 April, 10.00am

United service at Wetherby

7 May

Coronation weekend communion, Revd S Jakeman

14 May, 10.15am

Café church. Revd C Cheeseman

21 May

Eileen Clarkson

28 May

Fellowship service

SOUPER THURSDAY

Join us for homemade soups and puds on 30 March, 27 April & 25 May at 12 noon. We look forward to welcoming you.

East Keswick Methodist Church
Main Street, East Keswick, LS17 9EJ
T: 01937 573434

Free Wi-Fi now available

Church Steward: Penny Harrison

Churches Together



We are an ecumenical group from our local churches who enjoy working together to arrange a number of community events.



From the left: Robert Sierkierkowski, Eileen Clarkson, Liz Parr, Penny Harrison, Marie Clarke, Angela Hannafin, Charlotte Meek

We have organised an enquirers' course for those wanting to learn more about the Christian faith and, on Zoom, one of our bible studies explored our relationship with the environment.

Recently we met at the Methodist Church to join Christians around the world with our World Day of Prayer service.

Look out for details of our plans later this year to repeat the successes of last year's interactive Nativity Play, as well as the well supported fundraising Quiz Night.

If you have any ideas for our ecumenical group you can contact Penny on **01937 573434** or Liz on **01937 572867**, or come to our open AGM next January.

A Village Project for the Coronation

Lynn Tungate



On Saturday 6 May we will have the opportunity to celebrate the historic occasion of the Coronation of King Charles III and I am hoping everyone will share my opinion that it is a perfect occasion to celebrate living in our wonderful village.

It doesn't matter whether you are a royalist, a churchgoer or a newcomer - it's about coming together to celebrate our good fortune and to give the children of today some special memories for tomorrow.

My own project, with help from the ladies of The Bardsey Stitching Group (and anyone else who would like to join in) is to make bunting to decorate the village for about a week around Coronation Day. The bunting will then be available for villagers having private celebrations in the future - in exchange for donations to the St Aidan's Food Share programme. A cooperation of give and take.

The length of the bunting achieved will depend on time and materials but I am hoping we'll be able to decorate outside All Hallows Church, village hall, Callister Hall, school and the entrance to the sports club – assuming those responsible will allow me to do so!

I need your help!

We need donations of material – any colour. We are not sticking to red, white and blue because I'd like the bunting to be useful for other celebrations in future. Old sheets, shirts, skirts, scarves - anything we can cut into pennants, so remnants, curtains, quilt covers, etc., would also be ideal.

Bardsey Stitching Group meets on Monday afternoons in the Village Hall and anyone who would like to join us is welcome between 1-3pm. Material can be dropped off then or please get in touch with me and I'll happily collect your donation. You can help by sewing some pennants at the group meeting or at home or if you would like a template to make your own bunting, either for the project or to decorate your own home, please get in touch.

Get the kids involved!

It would be wonderful to see decorations made by children so I am hoping the school and playgroups will consider it a worthwhile project to get the kids involved - drawing pictures/decorations which can be laminated and hung around the village. This is also something they could do at home with a bit of help from Mum and Dad!

Decorate your own property or the entrance to your street

Why not make your own street decorations and hang them outside of your own home or co-operate with neighbours to decorate your street.

We'll also need help at the beginning of May with hanging the bunting (and perhaps a few balloons?). So anyone who is capable and willing, please contact me.

lynntungate@icloud.com

01937 574679

07921 777790

Bardsey Arts

Do you want to learn new creative skills or improve on those you already have?

Bardsey Arts is a new venture in a purpose built daylight studio.

Artists Ailsa Read and Clare Dean, and textile artist Katy Small are all experienced tutors who will each be holding a series of their individual courses throughout the summer.



For more information or to book a class email ailsaread1@gmail.com or phone **07831 326309**



Christian Aid is a global movement for everyone who believes poverty can be beaten, bringing them together to raise funds for lifesaving projects.

How Christian Aid works:

- By seeking to follow the teaching of Jesus Christ, who commanded his followers to love their neighbour and work for a better world.
- By standing with the most vulnerable and excluded people of the world – both in times of crisis and for the longer term. They give people survival essentials when they are without shelter or refuge, and help them find the strength and resources they need to flourish and protect themselves from shocks and disasters.
- By supporting people to stand up for their rights and to build stable, secure lives they can enjoy living.

And they are part of a global movement for change:

- They work to educate and mobilise people from all kinds of backgrounds to build a movement that can change the course of history and bring social justice to all.
- They campaign to ensure a more equal division of power in the world, promoting the rights and voices of women and girls – and anyone discriminated against because of who they are.
- They push our political leaders to tackle climate change and tax dodging – which hit the poorest the hardest – and for our society to welcome those who have been forced to flee their homes overseas.

Christian Aid would like you to pray for them, work with them and if possible give a donation to them.

Many of you know that during this week in previous years we have had an envelope collection in the parish which sadly is now no longer possible. However, it's important the vital work of Christian Aid still receives income, so we would encourage you to go to www.christianaid.org.uk and donate online.

Can I come for a sleepover?



Guide dogs in training in need of foster homes in Thorner and surrounding districts.

Guide Dogs is in urgent need of more volunteers who live near Thorner to care for trainee guide dogs while they prepare to provide life-changing support for someone living with sight loss.

Volunteer Fosterers for the charity provide temporary homes for future guide dogs, as they complete their specialised training. Guide Dogs covers the cost of all the food, veterinary care and equipment required for each dog and provides full training and support.



This is a great opportunity for an individual or a family to care for a dog, on a temporary basis, with all the costs covered. On weekdays, the dog you are caring for will attend training sessions with a local, specialist trainer from Guide Dogs.

We're looking for people who are able to drop off and collect a dog from our training site in Thorner, just like the school run! On evenings and weekends, the dog will then

spend time with you and enjoy time out from training sessions.

After a few months, the dog will hopefully qualify and move on to be partnered with a local person living with sight loss, becoming a life-changing guide.

Our Volunteer Fosterers really are an integral part of the guide dog journey — without them, we simply couldn't deliver our life changing work.

A guide dog begins its formal training at around 12-14 months old and, in usual circumstances, most dogs qualify as working guide dogs by the age of two.

Volunteer Fosterers usually care for dogs that are between 14-24 months of age.

The two main breeds the charity uses are Labradors and Golden Retrievers, which are crossed to gain the best characteristics of each breed. These make up almost 80 percent of the charity's dogs.

German Shepherds, Curly Coat Retrievers and Labradoodles are also used within the Guide Dogs breeding programme.

Guide Dogs is keen to hear from people who live a few miles' radius of the charity's training site at Bramley Grange on Skeltons Lane, Thorner, but will also accept applications from further afield if people are able to commit to travelling to Thorner to drop off and collect a dog. It could also suit people who commute from Leeds to York.

If you think you could provide a loving, temporary home for a trainee guide dog, please visit www.guidedogs.org.uk/volunteering or call **0800 781 1444**.

Bardsey with Collingham Mothers' Union

Brenda Sanderson

The clocks have gone forward and the days are lengthening. hopefully the worst of the weather is past.



In February we held our AGM and Stephen Scales kindly chaired this and kept the members in order. Reports on the year were given and Branch Leader, Marion Hickson, thanked the Committee and members for their support. Treasurer, Judith South, reported on a surplus and it will be decided in the near future which charity to support. Hazel Male was thanked for dealing with the Baptism cards, and Brenda Sanderson, Secretary for organising interesting speakers. Elizabeth Otty has agreed to be Branch Leader going forward and Marion was presented with a basket of hyacinths and grateful thanks for her hard work.

March arrived and so did the snow and the meeting was cancelled but telephone calls were made to keep in touch with each other. In March our MU had the task of doing the Mid-day prayers in Leeds Minster. It was a pleasure to be in such a wonderful building and made so welcome.

On **13 April** Ailsa Reed will give a talk entitled 'The Ladies of Pendle'. It will be good to have Ailsa in our midst.

At the meeting on **11 May** (fingers crossed) Lyn Tungate will tell us of 'Just a girl from Crossgates'. We look forward in anticipation to hearing her anecdotes.

The meetings are always held in the Callister Hall commencing at 2.15pm on the second Thursday of each month. New members are always welcome to join this friendly group or feel free to come as a visitor.

East Keswick Local History Group

Liz Parr

Our next meeting will feature Steve Burt, an eminent local historian, who 22 years ago gave our inaugural talk on the 'History of Roundhay Park'. This time he will reveal intriguing stories about the '**Lost Houses of Hunslet**', uncovered while he was researching his latest book 'The Remarkable Story of Hunslet'.



Everyone is welcome to join us on **11 May** at 8pm, in East Keswick Village Hall (Non-members £5). Check our website for more news of our group:

www.eastkeswickhistory.com

The Children's Society



On behalf of The Children's Society, we would like to say a big thank you to everyone who has supported their work over this last year, for their generous contributions as box holders, bakers and donors alike.

After the Christingle Service at St Mary Magdalene Church, we ran a cake stall which raised £133.30. Thanks to the generosity of the bakers who donated the delicious food and everyone who purchased the treats! A very special thank you goes to Susan Priestley who has been making and selling jars of marmalade. She has raised a fabulous £200. Well done, Susan!

Having counted all your spare change and notes - which seem to be appearing more and more in boxes - you will be pleased to hear that £1,716.64 was raised from collection box holders across the two villages.

Considering how little loose change we all seem to handle these days that is a remarkable amount and is an increase on last year's total, demonstrating that people are aware, more than ever, of the good

work that The Children's Society does.

People have been very kind and added extra pound coins and notes to boost their box totals. Those who are signed up for Gift Aid add a further 25% to the total of their donations.

Your valuable donations allow the Society to reach out to thousands of vulnerable children who are dealing with issues of hardship, abuse and neglect – often without anyone to support them. By choosing to support The Children's Society, you've done something truly lifechanging for thousands of children. Thank you. The Children's Society are very grateful for our support which is needed more than ever in these testing times.

If anyone else would like to support our most vulnerable children simply by keeping a box to pop in any loose change you may receive throughout the year, please contact

Helen Render (Bardsey)
01937 572742 / 07969 059982

Carol Peace (East Keswick)
01937 573061

The Children's Society is a national charity that runs local services that help thousands of children and young people who desperately need support. They campaign to make sure laws are changed to make children's lives better. Supporters help fund services, volunteer and join campaigns so that together young people know that "we are on their side."



Easter Egg Hunt!

Come join us for fun and games,
singing, stories, crafts & refreshments

Monday 10th April, 2.00pm
East Keswick Methodist Church
Families welcome!

Artists Around Wetherby 2023

24th & 25th June
1st & 2nd July
10.00am - 5.00pm

Artists, designers and makers in Wetherby
and nearby villages throw open their
studios to the public

Visit our website, download the
map and plan your visit to see art
in the making
(Available from May)

www.artistsaroundwetherby.com



[www.facebook.com/
artistsaroundwetherby](https://www.facebook.com/artistsaroundwetherby)

[www.instagram.com/
artists_around_wetherby](https://www.instagram.com/artists_around_wetherby)

Eco Chat: What's the Buzz About Bees

Elizabeth Otty

Did you know that World Bee Day is on 20 May? And did you know that a third of the world's food production depends on bees?

Bees are important in our ecosystem as they are vital to the process of crop growing with 75% of the things we like to eat, such as apples and tomatoes and strawberries, being pollinated by bees. To put it simply, bees are essential for maintaining the environmental balance between humans, plants, and animals. If it wasn't for bees the whole balance of nature would be in peril however climate change is now putting their numbers in jeopardy.



There are many types of bees. All of them like flowers but whilst some bees are particular about the flowers they visit, others don't mind, and while some are active only in the warmer months, others, especially now we are experiencing milder winters, stay active for much longer periods. Sadly almost all our flower-rich meadows have been lost but Britain has around 16 million gardens, all of which

could provide a haven for bees all year round.

So here's how you can be kind to bees and make your garden bee friendly.

- ♥ Plant bee-friendly plants like daisies and red clover and when buying seeds look for packets that are marked 'bee friendly'.
- ♥ Leave sections of your garden wild - letting the grass grow long gives the bees a place to shelter.
- ♥ Leave a small dish with a few pebbles and water to help out thirsty bees.
- ♥ Try to reduce or completely cut out the usage of pesticides as they're harmful to bees.
- ♥ Get to know more about beekeeping and support local beekeepers by buying their honey and other hive products.

Inspire and educate your children about the importance of bees. That's the best way to help protect these wonderful creatures.

Together let's make Bardsey and East Keswick bee friendly villages.

Climate Sunday

This year, we're celebrating Climate Sunday on Sunday 21 May. As part of our worship, we'll be thinking about our response to the environment, and listening to our guest speaker, Rev Dr Jan Goodair, who is the Area Environment Champion for the Leeds Episcopal Area.

We take environmental matters very seriously. Having achieved A Rocha Eco bronze and silver status in both churches, we are currently working towards gold. For more information about Climate Sunday, please contact the Parish Office.

East Keswick Wildlife Trust

Elaine Woolley

Getting ready for Spring

We have a number of bird boxes throughout our reserves to help promote conservation of our breeding birds. There are many pressures on our native wildlife and nest and roost sites are reducing for many species and so bird boxes can provide invaluable support.



Each year, before the breeding season is underway, volunteers clean out the bird boxes ready for the next seasons brood. All the boxes are numbered and recorded on a map on each reserve. Data is recorded from each box: if the box been used, type of nesting material, unhatched eggs or sadly any chicks that did not survive.

In Ox Close Wood, 45% of boxes had nests in them, and in The Ellikers 40%, which are very similar results to last year.

The majority of bird boxes were occupied by Blue Tits and Great Tits, we did however, also have some interesting finds. In The Ellikers, the beautiful nest as in the photo, we believe belongs to a Tree Creeper and



there were three nests in the sparrow terrace nest box for the first time. In Ox Close Wood, we found a box on the ground that had a nest of oak leaves inside. We did not disturb it, but photographed it, and have identified it as belonging to a wood mouse. Later in the year volunteers will observe the boxes to record any activity.

FORTHCOMING EVENTS (all welcome)

Wednesday 3 May: Bluebell Walk

Join us to see the display of bluebells in Ox Close Wood. Meet in the Crabtree Lane car park at 7.00pm.

Wednesday 10 May: AGM, Village Hall, East Keswick, 7.00pm

Dan Carne, a director of the Wood Meadows Trust will give a talk "Forgotten Landscapes: wooded grasslands in Great Britain". Dan will explore the history and ecology of wood meadows and wood pastures and make the case that these ancient agricultural systems have an important role to play in our modern landscapes.

Every Friday

New volunteers are very welcome to join us, contact **01937 574140** for more details.

Please go to **ekwt.org.uk** for information about our reserves and activities and how to join the Trust.



Bee-Crafty
Markets

Scarcroft Craft Market
at
Scarcroft Village Hall
on
Saturday 15th April

20+ Craft Stalls
Pop-Up Cafe
Gingerbread Decorating!

10am-3pm
Free Entry

Bardsey Tennis Club

This is a friendly club catering for all ages and abilities, which runs teams for adults and juniors in local leagues, as well as playing socially. There are club times specifically for men, women, mixed and juniors, as well as free availability to the courts when not otherwise being used.

The Adult fun mixed tennis sessions, which take place every Saturday morning from 10.30am throughout the year, are proving extremely popular.

Free, new tennis balls are provided for all club sessions, and there is hot water and tea/coffee making facilities in the clubhouse.



We look forward to welcoming new and old members joining our Club. The fees remain unchanged and are good value at £55 per year for Adults, £110 for a family, £15 for Juniors.

Fully qualified coaching is available with weekly Junior and Adult drop in coaching sessions for all standards.

For further details contact: bardseytenniscoaching@gmail.com or visit our website www.bardseytennisclub.co.uk

Bardsey & East Keswick Running Club

Here are some testimonials from members:

“Having never been a runner I was definitely apprehensive about joining the clubs Couch to 5K sessions. But I shouldn’t have been. It was run so well by a really supportive group. I ran 5K at the end of week 8 (and still can’t believe I did!) and I am now part of the main running Club.”

Trisha, Bardsey

“I started running in November 2022 and found the courage to join BEKRC in January. I haven’t looked back since. What a supportive community they are. I would not be running the way I am if it wasn’t for the club. I just wish I’d joined them sooner.”

Helen, Bardsey



**BARDSEY & EAST KESWICK
RUNNING CLUB**
YOUR PACE OR MINE

“I was recommended this club by another runner as I was struggling for motivation. BEKRC is welcoming and inclusive with absolutely no pressure to attend, go further

or faster. However, there are many members who are training to achieve their first 10K or Marathon with everything in between and the club will help you through the stages. Plus, there are always social events to get involved with especially Wednesday Beers after the run.”

John, Scarcraft

Why not come and Join us?

Mondays 6:30pm, Wednesdays 7:30pm,
Fridays 9:20am, Sundays 10.00am

Find us on **Facebook** or give us a call on
07508 601294

Diary Dates

APRIL		MAY	
10	EKMC Easter Egg Hunt, 2.00pm	6	King Charles III Coronation
11	Winter Warmers Lunch, 12.45pm	9	EK WI, 2.00pm
11	EK WI, 2.00pm	9	Winter Warmers Lunch, 12.45pm
12	Bardsey-cum-Rigton WI, 7.30pm	10	Bardsey-cum-Rigton WI, 7.30pm
13	Mothers' Union, 2.15pm	11	Mothers' Union, 2.15pm
16	Scarcroft Craft Market, 10am - 3pm	11	History Group, 8.00pm
17	EK Village Hall AGM	17	Bardsey Parish Council, 7pm
19	Bardsey Village Hall AGM, 7.00pm	21	Climate Sunday
19	APM & Bardsey Parish Council 7.30pm	25	EKMC Souper Thursday, 12 noon
27	EKMC Souper Thursday, 12 noon		

Village Groups and Facilities



Bardsey Sports Club

CRICKET – FOOTBALL – RUNNING - YOGA

- Members bar
- Secure, free, off-road parking
- Function room and grounds available for hire

For more information contact
Harwood Williams:

bardseysportsclub@gmail.com
07932 567520

NEW MEMBERS ALWAYS WELCOME

The **HALL** EAST KESWICK



The perfect venue for all occasions
with spacious function rooms,
ample parking and disabled access

STAGE - BAR - KITCHEN
TERRACE - EVENTS FIELD

www.eastkeswickvillagehall.org

Bardsey Nursery

For pre-schoolers aged 2-5 all year round, 07.30 - 18.00.

We also offer wraparound care and holiday clubs for school children.

Our bright airy space and wonderful leafy grounds are just perfect for exploring. Come and say hello!

Bardsey Primary School

01937 573999

bardsey@childrenscornerchildcare.co.uk



CALLISTER HALL

WOODACRE LANE, BARDSEY

For private functions and meetings

Well-equipped kitchen available.

For bookings and current hire rates please contact the Parish Office.

01937 574273

bardseyparishchur@btinternet.com



METHODIST CHURCH

MAIN STREET - EAST KESWICK



MEETING ROOMS FOR HIRE

Seating for up to 80 people • Fast broadband • Large screen TV with full connectivity • Well-equipped kitchen • Modern cloakroom facilities • Secure garden with two patio areas and outdoor furniture

For bookings and current rates contact Donah:

01937 574603 / 07914 043836

For further details visit our website: www.ekmc.org.uk

VOLUNTARY TRANSPORT GROUP

Please get in touch if you need transport to the hospital, the doctors, the dentist or prescription collection, shopping or a hairdressing appointment. We also have wheelchairs for loan.

In Bardsey Call:

Pauline Hills on 573083 / 07535 692366
Lynn or Brian Tungate on
574679 / 07921 777790

In East Keswick Call:

Susan Priestley on 572227 or Gaynor Anning on 572890

BARDSEY VILLAGE HALL

BOOKINGS - ROSIE STENTIFORD

01937 572652

Main Hall • Stage • Kitchen • Carpark
AVAILABLE FOR HIRE

NEEDLE AND THREAD GROUP

Third Monday of the month in East Keswick Village Hall from 1.00 - 4.00pm.

All types of needlework. Come and join us to learn or share skills and socialise. For further information please contact Heather on

07747 145422

Trade and Services Directory



David is the epitome of everything a trustworthy efficient & reliable P.A. should be. Effective at saving me both time & money. A rare find & an invaluable asset to my household.

AB - Bardsey

HELP! is just a 'phone call away

David Bransby
your-p-a-leeds.co.uk
07853 257 662

NEED HELP WITH A COMPUTER/SMARTPHONE/TABLET/TV?

I come to you • Windows setup & support • email help • PC tune up • one-to-one tuition • PC/laptop • data backup & transfer • smartphone/tablet/printer/broadband/wi-fi support

Thinking of buying a new computer/smartphone/tablet/printer/TV?

Speak to me first for advice on buying the right item at the right price.

Improve your online security

Have you been hacked/scammed? Forgotten passwords?

Paying too much for broadband/TV/landline/mobile contract?

I may be able to get you a better deal. You could save BIG money £££

Need help with TV setup/retune or getting Netflix, Amazon Prime, Disney+, Paramount+, catchup TV (BBC iPlayer/ITV/C4, etc.)? Setup and learn to use Amazon Echo, Fire Stick, Kindle, WhatsApp, Skype, Zoom and much more besides.

Contact **Lee Goodman** for more information (Est. 2009).

lee_gee66@hotmail.com / 01132 698466 / 07941 281558

**Tuesdays - TinyBeats
Baby & Toddler Classes**

**10am
Toddlers**

**Bardsey
Sports Club**

**11.15am
Babies**

The advertisement features a colorful background with musical notes and the 'TinyBeats' logo, which consists of three stylized figures in green, blue, and red. The text is arranged in a clear, bold font, with the class times and location highlighted in white boxes.

BARDSEY ARTS

A new art school for beginners or experienced artists, in a dedicated studio with professional tuition.

For further details of classes or individual teaching contact:

07831 326309

ailsaread1@gmail.com

Improve, Don't Move!

Maximise the value of your home.

- SPACE-SAVING - MAXIMISE YOUR GARAGE HEADROOM
- SECURITY-ENABLED AUTO-LOCKING SYSTEM
- CHOICE OF 21 COLOURS TO MATCH YOUR HOME
- REMOVAL AND RECYCLING OF YOUR OLD DOOR
- DEDICATED AFTER-CARE TEAM

GAROLLA



ROLLER SHUTTER DOORS

01937 420 034

LINES OPEN 7 DAYS A WEEK

www.garolla.co.uk



4.8 out of 5 / 4,700 reviews



4.8 out of 5



Where reputation matters
9.8 out of 10



APPROVED

BESPOKE ELECTRIC DOORS MANUFACTURED IN THE UK



FREE FITTING
PAYMENT ON
INSTALLATION

PRICED EXAMPLE **£895**
COMPACT • UP TO 2.4M

GAROLLA ★ PREMIUM
Increased Security • Double Insulation
One-Touch Close



PRICED EXAMPLE **£1,990**
PREMIUM • 3.4M • ANTHRACITE

Buywell interiors

Fitted Kitchens, Bedrooms and Home Office Solutions



BUY LOCAL - BUY BRITISH - BUY WELL

UNIT 155, AVENUE B,
THORP ARCH ESTATE, LS23 7BJ

Tel: 01937 844288
www.buywellinteriors.co.uk

THORNER FLOORING SERVICES

ALL TYPES OF FLOOR COVERING SUPPLIED AND FITTED

CARPETS • RUGS • VINYL • WOOD



THE MOBILE SHOWROOM
1000'S OF SAMPLES BROUGHT
TO YOUR DOOR

8 St. Peter's Garth
Thorner, Leeds
LS14 3EE

01132 892344
07774 171744

craig@thornerflooring.co.uk
www.thornerflooring.co.uk

Find us on

CABINET MAKER / FRENCH POLISHER

Also floor sanding and re-polishing

Edward W. Vickerman

01132 738242

247 Main Street, Shadwell, Leeds, LS17 8LA



S.P. Harrison

Painting & Decorating

Quality paperhanging & painting

01132 813956 / 07961 181848



We are currently selling homes in Bardsey and East Keswick quickly. If you are considering moving, now could be a good time to put your home on the market.



For a FREE valuation simply visit www.furnellresidential.co.uk and click the INSTANT VALUATION link



furnellresidential
ESTATE AGENTS & PROPERTY CONSULTANTS
Your home, our business

PROUD TO BE SUPPORTING



Hill Barn, Cornmill Lane, Bardsey LS17 9EQ t: 01937 574 685
e: info@furnellresidential.co.uk w: furnellresidential.co.uk

If you have instructed another agent on a Sole Agent basis, the terms of these instructions must be considered before contacting us.

GREYSTONES - STAITHES

Furnished holiday home to rent in the heart of the old village on the picturesque East Coast.

Sleeps 9 in 5 bedrooms (1 En Suite)

Ideal for long weekends, midweek breaks and family holidays.

01937 574177 / 07850 704344

www.greystones-staithes.co.uk



HEATING OIL DIRECT TO YOUR HOME
STORAGE TANK SUPPLY AND INSTALLATION
EMERGENCY SERVICE & SATURDAY DELIVERY

WWW.TATEOIL.CO.UK
CALL: 08456 43 44 43

LEEDS ROAD, OTLEY, W. YORKS, LS21 3BB



Door & Window Repair • Lock Upgrades
• Garage Locks & More

07721 876571

www.lemonlocksmith.co.uk



LOCKFARR LOCKSMITH & CCTV

Norman Farrar

MPL NATIONALLY TRAINED LOCKSMITH
FULLY TRAINED CCTV INSTALLER

07760 111418

norman_farrar@hotmail.com

Find us on Facebook – Lockfarr Locksmith and CCTV



MODERN CLASSICS

DEVELOPING EXCLUSIVE NEW BUILD AND CONVERSION HOMES IN THE BEST LOCATIONS

To discuss how we can unlock the value of land or buildings that you may wish to sell or for details of forthcoming developments please contact our award winning team.

0113 268 3416

info@parklanehomes.co.uk

www.parklanehomes.co.uk

SCAN FOR



WEBSITE

HYLAND BUILDERS LTD

EST
1974

Building, Roofing and Glazing Contractors

DOMESTIC, INDUSTRIAL AND COMMERCIAL - EXTENSIONS & ALTERATIONS
SPECIALISTS FOR ALL YOUR BUILDING AND MAINTENANCE NEEDS

Flat Roof Specialists • Roof Repairs (strip & recovers) • Replacement Windows & Double Glazing • Drainage Drives • Garden Walling • Paving (slab or block) • Fencing • Landscape Gardening • Plastering • Pebble Dashing • Pointing • Guttering & Fall-pipes • Painting & Decorating • Security Services • UPVC, Facias & Cladding

LEEDS CITY COUNCIL APPROVED - GRANT WORK - ALL WORK GUARANTEED
24 HOUR EMERGENCY SERVICES FOR GLAZING, PLUMBING & BLOCKED DRAINS
(The impossible we can do immediately, miracles take a little longer)

FOR ADVICE AND PERSONAL ATTENTION CALL

07710 099596 or 01937 572596 (24hrs)

10 ROSE CROFT, EAST KESWICK, LEEDS, LS17 9HR





SFR PLUMBING & HEATING

Contact Stefan

07833 476 252

www.sfrplumbingandheating.co.uk
sfrplumbingandheating@gmail.com

- * New Boiler Installations & Service
- * Cookers & Fires
- * Landlords Gas Safety Certificates
- * Invented Systems

- * New & Replacement Radiators
- * Power Flushes
- * Shower & Bathroom Suites
- * Tiling
- * Repairs & Maintenance



SAM WATTS

ALL PLUMBING INSTALLATIONS
AND REPAIRS

Free estimates ▪ No call out
charges ▪ No job too small ▪ City &
Guilds certified

07759 060709



Professional
PLUMBING & HEATING
Engineers



Bathrooms ▪ Glazing ▪ Gas Installations

M. MARTIN

(ENG TECH, LCGI, MCIPIHE, RP, GAS SAFE REGISTERED)

Established 1981 - Fully Insured

01132 737197 / 07850 971471

www.leedsplumbingandheating.co.uk
enquiries@leedsplumbingandheating.co.uk
707 Shadwell Lane, Shadwell, LS17 8ET

ANTHONY SHORTALL

Your local

PAINTER & DECORATOR

City & Guilds Qualified
Apprentice Trained

No job too small or too large

01133 930960 / 07711 706679



EC Electrical
Installations

Eddie Clayton
Electrician

All aspects of electrical work taken

07946 745753

eddie_c_7@hotmail.com

Local Electrician

LS22 Electrical Ltd

(Est. 1982 - Collingham)

- ✓ ALL ASPECTS OF DOMESTIC ELECTRICAL INSTALLATIONS
- ✓ NEW INSTALLATIONS, ALTERATIONS & REPAIRS
- ✓ TELEPHONE & COMPUTER CABLE INSTALLATIONS & REPAIRS
- ✓ NO JOB TOO SMALL!!!
- ✓ COMPETITIVE, EFFICIENT, TIDY & FRIENDLY SERVICE

For advice or to arrange a visit call Geoff on

07791 844305

E: service@ls22electrical.co.uk





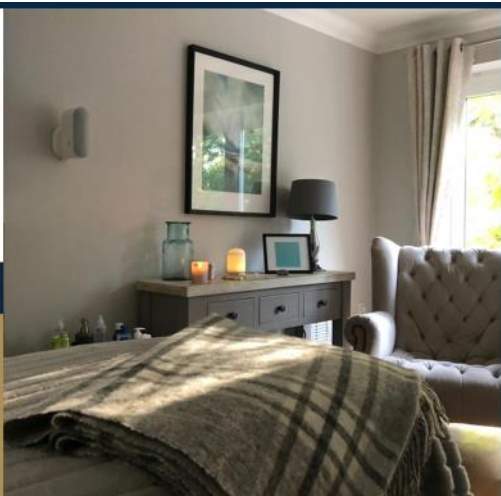
Wood View

SPORTS MASSAGE & HOLISTIC THERAPIES

Relax | Renew | Revive



Sports Massage
Therapeutic Massage
Aromatherapy Massage
Reflexology



**Practicing from Hetchell Court in Bardsey
Weekdays 9am to 9pm and Saturday 9am to 3pm**

07590 950083

**www.woodviewtherapies.co.uk
3 Hetchell Court, Bardsey, Leeds LS17 9BY**



COUNSELLING - ADRIENNE CREW (MBACP)

Registered member of the British Association for Counselling & Psychotherapy
Counselling can provide valuable support when there is a crisis.

I can offer help with the following;

**RELATIONSHIPS ■ COUPLE COUNSELLING ■ DEPRESSION
BEREAVEMENT ■ WORK LIFE BALANCE ■ ANXIETY ■ ANGER ISSUES
■ LOW SELF-ESTEEM**

Tel: 07715 267676 Email: adrienne.e2@gmail.com

www.adriennecrew.co.uk

The Complete Funeral Service - Est. 1808



G.E. HARTLEY & SON LTD.

Family Run Business - 24 Hour On-Call Service
Monumental Masonry - Pre-paid Funeral Plans

www.gehartley.co.uk

WETHERBY
66 Westgate
LS22 6NJ
01937 588888

GARFORTH
62a Main Street
LS25 1AA
0113 286 2980

CHIROPODIST - HOME VISITS

PAULINE HUGHES
MSSCh REG.

07745 950528

SCARCROFT - LEEDS LS14 3BS

Hair by Kathryn
MOBILE HAIRDRESSER
07767 692052

Andrew Morgan Opticians

NHS & Private eye examination / Contact lenses / Wide range of spectacle frames / ZEISS, ACUVUE® & Lens specialists

HOME VISITS AVAILABLE

01937 849933

170 High Street, Boston Spa

www.cowenmorganopticiansripon.co.uk

EKOne HAIRDRESSING

BESPOKE COLOURING & RESTYLING



**STATE REGISTERED
MASTER CRAFTSMAN**

Professional salon environment, with off road parking

Call **Elaine** on

**01937 572550 /
07762 024229**

3 The Grove,
East Keswick

Bardsey Landscape and Garden Services

Grass Maintenance ▪ Patios & Paving ▪ Fencing & Hedging

Call Andy on

01937 573160

07964 180975

Bardsey based - City & Guilds
NPTC



**Adrian Wood
Boston Spa
Garage**

SERVICING CARS LOCALLY FOR OVER 30 YEARS

 Moor End, Boston Spa, Wetherby LS23 6ER
Tel: 01937 844400



**BODY SHOP
REPAIRS**

**All types of Accident
and Repair Work**

Unit 10 Erivan Park, Sandbeck Way, Wetherby LS22 7DN
Tel: 01937 580700

DALBY LANDSCAPES

Landscape gardening, fencing & general garden maintenance ▪ Weekly, fortnightly or one-off garden tidy ▪ All aspects of tree services undertaken

Nigel Dalby 07752 586566

Ben Dalby 07840 442628

01937 574583

www.dalbylandscapes.co.uk

Gillbeck Associates Ltd

**ACCOUNTING / BOOKKEEPING
/ TAX & PAYROLL**

A professional service at very affordable rates - let us save you money!

01937 585432

enquiries@gillbeck.co.uk

GRAHAM LANDSCAPES

Drives & Decking • Fencing & Walls •
Gardens & Gates • Patios, Pergolas &
Paths • Paving & Power Washing •
Resin Bound Gravel • Turfing & Tidying

The award winning
garden builders

01937 580607 / 07752 093361

Free advice & estimates • 12 month guarantee • £2 million liability cover



LANDSCAPING SERVICES LTD
landscape & fencing contractors

Local, reliable and professional services for all
aspects of hard and soft landscaping
For more information and a FREE ESTIMATE call

01937 579117

jmaservicesltd@yahoo.co.uk
www.jmalandscaping.co.uk

Parker Hartley & Co

Incorporated Financial Accountants

Services provided:

- ✓ Advice on setting up your business
- ✓ Annual accounts preparation
- ✓ Bookkeeping and preparation of VAT returns using MTD
- ✓ Payroll and auto enrolment
- ✓ Tax returns

T: 07723 027301

E: info@parkerhartley.co.uk
www.parkerhartley.co.uk



BARDSEY TREE SERVICES Ltd 01937 573689

Tree Surgeons & Arboricultural Contractors

- All aspects of tree surgery & felling
- Hedge cutting/removal
- Stump grinding
- Site clearance for the Construction Industry
- Suppliers woodchip
- TPO/Conservation area checks
- Tree Surveys & Reports/Free Estimate
- Emergency Call Out
- £10 million Public Liability Insurance

www.bardseytrees.co.uk

info@bardseytrees.co.uk

Director: Andrew R Ward

The Village News magazine is published bimonthly by the Parochial Church Council of the Ecclesiastical Parish of Bardsey with East Keswick and distributed free of charge to all households in the Parish. However to help cover the cost of printing and administration a donation of £1 per copy would be appreciated. See our website for different ways to contribute;
www.bardseyekparish.com/giving

A digital copy of the magazine can be viewed or downloaded from the parish website and is also available by email on request.

We welcome contributions from our village communities, relating to news,

events and topics of interest, for possible inclusion in the magazine, without charge, which would be published at the discretion of the editorial team.

Please send entries for inclusion to:
bardseyecc@gmail.com

Copy deadline for the June - July 2023 edition is Friday 19 May.

If you missed previous editions you can still find them on the parish website.

Please note, articles in this magazine express the views and opinions of diverse groups. They do not represent a formal policy of the Church.

The Parish of Bardsey with East Keswick

Incumbent: Revd Angela Hannafin

All Hallows Church

Church Lane, Bardsey, LS17 9DH
Churchwarden: Jacquie Earnshaw
01937 574877

Saint Mary Magdalene Church

Moor Lane, East Keswick, LS17 9ES
Churchwarden: Fiona Siekierkowski
01937 572836

Parish Administrator: Catriona Brent

Parish Office
Callister Hall, Woodacre Lane
Bardsey, Leeds, LS17 9DG
T: 01937 574273
E: bardseyparishchur@btinternet.com

www.bardseyekparish.com

Registered charity Number 1134014

This magazine is printed on fully recyclable paper, by an ISO 14001:2015 certified printer using FSC (Forest Stewardship Council®) paper stock.

