

THE PARISH OF BARDSEY WITH EAST KESWICK

Village News



JUNE – JULY 2023

A round up of church news and activities from the villages of Bardsey, East Keswick and the surrounding area

Welcome in summer and join in with all the **community events and activities**



Contents

From the Vicarage	3
Parish Church Services	4
From the Register	5
Annual Parish Church Meeting (APCM)	5
Electoral Roll	5
Bartering for Bunting	6
East Keswick WI Update	6
East Keswick Methodist Church Services and Update	7
Bardsey Bowling Club	8
Collingham Patient Participation Group (PPG) Survey	8
Leeds Area Riding for the Disabled	9
Coming to Church	10
East Keswick Wildlife Trust	11
Bardsey Parish Council Report	12
Bardsey Cum Rigton WI Update	13
Bardsey Parish Walks	13
Callister Café	14
Bardsey with Collingham Mothers' Union	14
Holiday Eco Highlights	15
Churches Count on Nature Week	16
Wetherby Choral Society Summer Gala Concert	16
Bardsey Gala	17
Bardsey Gardeners	18
East Keswick Parish Council Report	19
Bardsey and East Keswick Running Club	20
Bardsey Sports Coronation Picnic	20
Diary Dates	21
Village Groups and Facilities	21
Trade and Services Directory	23

From the Vicarage

Angela Hannafin



Welcome to our June-July edition of the Parish News. The natural beauty of this time of the year means it's a time to be grateful for such a beautiful part of the world to live in.

We're coming out of the 'Annus Horribilus' that we've experienced over the past few weeks. As I mentioned before, storm damage, a broken wall and no heating at All Hallows came as a triple blow. Nevertheless we endured, and enjoyed the fellowship and hospitality of services together at St Mary Magdalene as we did so. Now the heating is mended, and although the wall still needs to be fixed, we're back to normal, with a slight change to our first Sunday of the month.

From now on, normal services will be:

First Sunday: Joint Service at either St Mary Magdalene or All Hallows at 10.00am.

Second Sunday: Holy Communion at 8.00am at All Hallows and Family Services at both churches at 9.15am and 10.45am.

Third Sunday: Morning Worship at All Hallows at 8.00am and Holy Communion at both churches at 9.15am and 10.45am

Fourth Sunday: Holy Communion at All Hallows at 8.00am and Morning Worship at both churches at 9.15am and 10.45am.

We recently held our Annual Parish Church Meeting (APCM) and reviewed the year past and present. We can see, post-Covid, we have made good strides and continue to reach out to spread the good news of Jesus to those around us. There is much to give thanks for, including the amazing community of volunteers who we partner with on so many levels. If that includes you, then please accept our thanks for your support. Partnership is the key to our continued growth, in whatever we do. As we look forward, we hope to continue to grow our partnerships, with a focus on achieving Gold 'Eco' status together. On that front we'll be organising a 'Green Fair' in September, so please save the date for **Saturday 9 September**.

At our APCM, we spoke about increasing numbers on our Electoral Roll, which helps indicate membership of our parish. If you'd like to become a formal 'member', there will be forms at the back of church. The main criteria is that you are baptised.

As ever, I want to thank all of the contributors to this magazine, and all of the amazing volunteers who work so hard to deliver it so you can read it.

With every blessing

Angela

Parish Church Services

DATE	LOCATION	SERVICES
SUN 4 JUN	All Hallows	10.00am Joint Holy Communion - Climate Sunday with guest speaker Revd Dr Jan Goodair
WED 7 JUN	St Mary Magdalene	11.00am Holy Communion
SUN 11 JUN	All Hallows	8.00am Holy Communion 10.45am Family Service
	St Mary Magdalene	9.15am Family Service
SUN 18 JUN	All Hallows	8.00am Morning Worship 10.45am Holy Communion
	St Mary Magdalene	9.15am Holy Communion
SUN 25 JUN	All Hallows	8.00am Holy Communion 10.45am Morning Worship
	St Mary Magdalene	9.15am Morning Worship
SUN 2 JUL	St Mary Magdalene	10.00am Joint Holy Communion
WED 5 JUL	St Mary Magdalene	11.00am Holy Communion
SUN 9 JUL	All Hallows	8.00am Holy Communion 10.45am Family Service
	St Mary Magdalene	9.15am Family Service
SUN 16 JUL	All Hallows	8.00am Morning Worship 10.45am Holy Communion
	St Mary Magdalene	9.15am Holy Communion
SUN 23 JUL	St Mary Magdalene	11.00am Patronal Festival
SUN 30 JUL	All Hallows	8.00am Holy Communion 10.45am Holy Communion
	St Mary Magdalene	9.15am Holy Communion

From the Register

We welcome those who have been baptised

ETTA WARREN

Sunday 14 May, All Hallows

We remember those whose funerals have taken place

NIGEL LUPTON

Tuesday 18 April, Saint Mary Magdalene

BRYAN SMALL

Tuesday 2 May, All Hallows

PAUL THOMPSON

Tuesday 16 May, All Hallows

TERRY BATTERSBY

Friday 26 May, All Hallows



Annual Parish Church Meeting (APCM)

The APCM was held this year on 2 May in All Hallows Church. We reviewed the past church year and looked ahead to the next, with a notable emphasis on our 'eco' push. We re-elected several members of our church leadership team, and our two churchwardens, Jacquie and Fiona, were re-elected to serve for another year. However, we would like to share the load a bit more across our churches and are actively exploring how to do that.

We ended our meeting with a prayer and a toast to the year ahead for our church parish.

There has been some confusion about whether the 'church parish' is linked to the 'parish council'. So, to clarify, the 'church parish' refers to the area covered by the church's ecclesiastical boundary (and the people who live in it), which in our case covers Bardsey, East Keswick, Wike and Scarcroft. It has no direct links to the Parish Councils, which are elected local government administrative bodies.

Electoral Roll

If you'd like to be part of the church membership, perhaps you could consider joining the Electoral Roll? There's no cost or commitment but it does mean we have a more accurate snapshot of those who support our churches. It also means that you can vote at the next APCM. If you'd like to be added to Roll please contact our Parish Office for more details.

Bartering for Bunting

Lynn Tungate

In April I asked for help with donations of material or sewing skills to support my project, in co-operation with ladies from the Bardsey Stitching Group, to make bunting for use in the village around the time of the Coronation.

The project was a lovely success, which brought smiles to many faces, and I was pleased we were able to achieve the objective of decorating outside the church, village hall, Callister Hall, school and entrance to the sports club. This could not have been done without considerable help from members of the Stitching Group, and also donations of material and time from neighbours and others in the village, including a donation for expenses from the Parish Council.

I want to thank anyone and everyone who helped make it happen – from donations and cutting pennants to taking down the finished

bunting after the Coronation. Each and every person's input is appreciated, I sincerely could not have done it without you! **Thank you.**

Any donated material which was not used for bunting will not be wasted. It will be turned into throws, cushions, etc., for families escaping domestic violence and starting again in new homes.

NOW ON TO PHASE 2

It had always been my plan that we would make the bunting available for anyone who would like to borrow it for private celebrations (or village events) in exchange for donations to St Aidan's FoodShare.

I'm keen to spread the word - the bunting has been kept and is available on loan.

In exchange we ask that you make a donation of a bag of groceries (for example, tinned goods, pasta, sugar, cooking oil, etc.), which will be passed to the St. Aidan's FoodShare scheme, to help those less fortunate families in need at this difficult time.

If you would like to discuss borrowing bunting, please get in touch and I'll happily show you all the different options.

lynntungate@icloud.com

East Keswick WI Update

Elizabeth Ward



In April Rita Saville Stone, from Shadwell, showed slides, and spoke about the suffragettes, especially in Leeds. Great efforts were made to give women the right to vote. We must never waste the opportunity.

At our May meeting Jane Sowden gave an account of her career in reflexology. A fascinating subject, giving relief from the stress, etc., of our lives. Our President

'volunteered' her feet for the demonstration, very brave!

Members participated in a WI quiz at St Chads; afternoon tea at Scarcroft, to mark 40 years of the West Yorkshire WI Federation, and a wonderful lunch at Scarcroft Golf Club to celebrate the 100th Birthday of Scarcroft WI.

13 June

The Dogs Trust Competition, a "doggy" photograph.

11 July

An outing (to be arranged).

Meetings are held at 2pm on Tuesdays in East Keswick Village Hall. Visitors are always welcome and we look forward to seeing you.

East Keswick Methodist Church

SERVICES

All services are at 10.30am unless otherwise stated. We welcome all and everyone to our services and to join us for tea or coffee after the service.

4 June

United service at Collingham

11 June

Café Church, Keith Hartrick

18 June

Communion with Collingham, Rev S Jakeman

25 June

Eileen Clarkson

2 July

Fellowship Service

9 July, 10.15am

Circuit service at Tadcaster

16 July

Communion, Rev Godfrey

23 July, 11.00am

United service with St Mary Magdalene

30 July

Heather Shipman

6 August

Keith Hartrick

13 August

Fellowship Service, united with Collingham

20 August

Communion, Rev S Jakeman

27 August

David Mountain

East Keswick Methodist Church
Main Street, East Keswick, LS17 9EJ

T: 01937 573434

Free Wi-Fi now available

Church Steward: Penny Harrison

SOUPER THURSDAY

We'll still be serving homemade soups during the summer, so please come join us at noon on Thursday 29 June and 27 July. Weather permitting we can sit in the garden!

EASTER EGG HUNT

On Easter Monday we had a lot of fun making Easter Gardens, hunting for eggs, and an egg and spoon race. There was plenty of chocolate, and delicious homemade refreshments.

Look out for details of our
Summer Activity Afternoon.



Bardsey Bowling Club



June is a great month to start playing bowls, sunshine, fresh air and some gentle exercise! We are lucky to have such a peaceful location in the village, which is a great place to unwind and socialise. If you would like to organise a trial bowls session, please contact Andy on **07910 195227**. All equipment will be provided and it's free!

Thursday 8 June

Moortown Brownies will visit us for a fun bowls session. If you have a group that would like to arrange a session please get in touch.

Saturday 24 June

This is our next Open Day, with family fun in the morning - learn how to bowl. Round robin fun pairs games in the afternoon, which are open to all. See local advertising and social media for further info.

www.bardseybowlingclub.com

Crown green bowls is a game anyone can play, and is an easy and rewarding game to learn and offers some great health benefits.

Collingham PPG Survey

Butterfly Club

Memory Café &
Group



Recently the Patient Participation Group (PPG) has been asked to look at the feasibility of setting up a dementia club, (sometimes called a memory café), for carers and their loved ones who live in the Church View practice area.

A recent survey has shown that most would like this type of club. The format for the club meetings has altered little over the years, but now that the time has come to consider having our own local club, it's only natural to ask the question - what would you like?

What are the priorities for the type of venue that we are looking for, and what plus points should it have? Is entertainment still a necessity? If so what type and how often?

We would like to hear from those of you who are currently acting as carers and those of you who may have experience of dementia care in the past. Your experience, as well as views, as to what you would like to have are essential, and extremely valuable to us in achieving a successful and enjoyable club.

Please let us have your thoughts by email to our email address at;

ppgcollingham@gmail.com

Your replies can be as long or as short as you like, with plenty of detail or just bullet points. Everything will be considered and your views will be an immense help.

We look forward to hearing from you.
Please don't delay - lets have it your way!

Leeds Area Riding for the Disabled

Leeds Area RDA has been in operation since 1968. This year will mark 55 years of providing riding therapy in the North Leeds area. It has moved a number of times over the years but since 2011 has been based off Wike Lane, in East Keswick. Our sole purpose is to provide riding therapy. We do this currently with our five horses - Toby, Tia, Penny, Artie and Robbie.

We have weekend riding sessions, with currently 35 riders coming weekly or

fortnightly. We also offer 'Tea with a Pony' sessions during the week. These don't involve riding but focus rather on the sensory experience with the horses - and of course a cup of tea and slice of cake.

All of our riding and 'Tea with a Pony' sessions are run completely by our fantastic team of volunteers. We are always looking for new volunteers. If you or anyone you know are interested in volunteering with our regular sessions or helping with the running of our group (e.g. fundraising) please get in touch.

For further information on riding lessons, 'Tea with a Pony' sessions or volunteering please contact Nichola Webster at; leedsarearda@hotmail.com

Facebook:
www.facebook.com/leedsarearda



Coming to Church

Does thought of coming to church feel more than a little daunting? You will probably have several questions and reasons why it's not a good idea. We have highlighted some common reasons why people worry about attending, and tried to provide some reassurance that it might be better than you fear!

I won't know what to do

Nor do we sometimes, but we'll help you and won't try to catch you out. And anyway, who cares if someone sits down when everyone else is standing up!

I don't know anybody

That'll last until you walk through the door. We're just the same as you - local people from in, and around the area - and cannibalism died out round here a few years back!

Ten years ago, someone at a church somewhere was really awful to me

That's really bad, and we're sorry you experienced that. Give us a chance to make that up to you.

My kids will be too noisy

Great, we love noisy children. Each one created uniquely in the image of God. And anyway, the vicar can be quite noisy too!

I can't come to Church until I get my life together.

Church is **how** we get our life together; a place for new beginnings and a place for belonging.

Church is filled with a bunch of Hypocrites

Correct! And there's plenty of room for more . . . imperfect people are especially welcome.

Is there some kind of 'dress code'?

Yes. The code is 'wear some clothes'. Otherwise just come as you are.

I'm not sure I believe everything you believe

Absolutely fine! But you can still belong and be part of a group of people journeying together to learn how to love. Doubters are always very welcome.

If you knew me, and what I've done, you wouldn't want me

If you know us, and what we've done, you wouldn't be worried. Forgiveness is at the heart of the Christian message. It's OK to not be OK.

I'm not Church of England

So? Church is not about a religion – it's about relationship: relationship with God and relationship with each other.

We hope to see you soon....!

East Keswick Wildlife Trust

Elaine Woolley

Woodland Wildflowers

In Ox Close Wood, our reserve by the river Wharfe, the woodland floor and rides (long narrow glades which open up the woodland to light) are carpeted each spring with wood anemones, bluebells, greater stitchwort, yellow archangel and cowslips.



Many species found here, such as Herb Paris, are indicators of ancient woodland and are locally rare. It was a beautiful evening for our annual bluebell walk on 3 May, and all who came enjoyed the bluebells and other wild flowers in all their glory.

As the woodland comes into leaf the canopy closes and light is restricted on the woodland floor. The ground flora then dies back until next spring. The managed rides and open grazed areas in Ox Close allow light into the woodland and red campion, common spotted-orchids and St John's wort may be seen.

The Friday volunteers have been removing the invasive *allium paradoxum* along the riverbank. This is an asian species of wild onion and in England and Wales is listed on 'schedule 9' of the Wildlife and Countryside



Act, and is illegal to plant in the wild. This plant is threatening the habitat on the river bank where there are wood stitchwort, water avens, goldilocks buttercup, greater bittercress and wood sorrel, which are all locally rare.

A group of our volunteers attended a wildflower identification and sketching day recently in Ox Close Wood, led by Melanie Smith. Some of us are quite new to identifying flower species and this was very informative and enjoyable.



New volunteers are very welcome to join us. Contact **01937 574140** for more details.

SAVE THE DATE

Family Pizza Day - Sunday 9 July, in Ox Close Wood. More details to follow nearer the time.

Please go to ekwt.org.uk for information about our reserves and activities and how to join the Trust.

Bardsey-cum-Rigton Parish Council Report

Cllr. Linda Flockton



Report from Annual Meeting on 17 May

Election of Chairman & Vice Chairman: The vote was unanimous for Ed Stentford to continue as Chairman. It was also proposed and unanimously agreed that Dr Mike Bosomworth should continue as Vice Chairman.

Bardsey Field: Cllr Jeanne Jackson is now representing Bardsey Parish Council as a Trustee of East Keswick Wildlife Trust (EKWT), and we will receive regular updates on how things are progressing on Bardsey Field, at our meetings.

Speed Indicator Device (SID) Keswick Lane:

The eastbound SID was taken away for repairs some time ago and we have sent a reminder email to LCC asking when we might have it back in place.

HIGHWAYS UPDATE

Keswick Lane: Dropped kerbs were requested last year at the bottom of Woodacre Lane, where it meets Keswick Lane, and these have now been installed.

Woodacre Lane: Blocked drains were reported to LCC and dealt with quite quickly.

Hedges Overhanging Pavements: Please could we request that domestic hedges are cut back if they are overhanging pavements and make it dangerous for parents with children and prams, etc., who are having to go onto the road in order to get past these narrow areas.

Dog Fouling: There have recently been many complaints about dog fouling on pavements on Keswick Lane and in various other areas of the village. Please can dog owners ensure that dog faeces are collected in bags, double wrapped and put in any LCC bins around the village or taken home and placed in your own dustbin.

Pond: Recently the Parish Council was approached with a request from a family who wanted to install a memorial bench in the pond area. As there were already two benches close to the pond the Council suggested that an information board might be installed instead. The family readily agreed to this proposal and so Jason Cook, of Deep Blue Digital, was commissioned to design and produce the information board, which is sponsored by and in memory of Ken and Audrey Taylor and Sophie Lyall.

Parish Walks: These will take place on Saturday 22 July and Saturday 5 August. For more information see the article on the adjacent page.

The next meeting will be held on Wednesday 21 June, at 7.00 pm in Bardsey Village Hall (BVH) Committee Room. The following meeting will be held on Wednesday 19 July, at 7.00pm again in BVH Committee Room. The first ten minutes will be set aside to deal with any issues raised by residents.

Full minutes and other information are published each month on our village website.

www.bardseyvillage.org.uk

Bardsey cum Rigton WI Update



Brenda Sanderson

What a busy time it has been with three Bank Holidays in May, including the glorious Coronation. Bardsey looked amazing with the bunting made by Lynn Tungate and her band of helpers – well done ladies.

The WI were kept on their toes with meetings and activities commencing with the April meeting, when Paul Blakey told us, in an effortless style, about the growth of his 'Street Angels' work and the extensive areas and places they now support.

A team entered the West Yorkshire Federation quiz, held at St. Chad's in Headingley. They didn't win but gave a good account of themselves, and had a fun evening. The WI were asked to run a Coffee Morning alongside the Bardsey Gardeners Plant Sale, and they did so with gusto. The bacon sandwiches smelt and tasted magnificent and the cake stall was impressive. A total of £480 was raised for their funds.

May got off to a bit of a quieter start with the Bluebell Walk around Hetchell. Not many participants and quite muddy but good company. In quite a contrast to the April meeting, 'Professor Fiddlesticks', aka John Cosham, showed us how to make animals out of balloons and our efforts were hilarious. Laughter certainly makes you feel good.

The Golden Plover Group

A visit to Langlands Garden Centre in April for a demo on hanging baskets, also provided many good tips, good refreshments and an opportunity to shop.

Their next get together is a 'Garden Party' at Hazel Smith's on **5 July**.

14 June

Something completely different. Arun Gujran will talk about and demonstrate Tai Chi. The competition is for 'something Chinese'.

12 July

The long awaited evening with 'The Songbirds'. We truly hope this will happen, as on the previous two occasions it had to be cancelled. The competition that evening is 'a songbird'.

All our meetings are on the second Wednesday of each month at 7.30pm in Bardsey Village Hall and visitors are always welcome.

Bardsey Parish Walks

These take place once a year in order to explore the boundaries of our parish and ensure that the footpaths are well used. The first parish walk on the east side of the Village will begin at **2pm** on **Saturday 22nd July**.

The second Parish Walk on the west side of the Village will take place from **2pm** on **Saturday 5th August**.

Do come along and join us and meet some of your parish councillors and make new friends on a pleasant walk, which should take approximately 2 hours. Boots or strong shoes are recommended and dogs are welcome.

Please meet at the bottom of Mill Lane at 2pm for both walks which will be led by Cllr Linda Flockton

Callister Café

Previously known as 'Winter Warmers', this is a monthly lunch and social space for anyone living in and around Bardsey. All welcome.

Join us for homemade lunch from 12.45-2.00pm on the second Tuesday of the month. It's free but donations are welcome, to go towards the St Aidan's Foodshare.

Join us on **13 June** and **11 July** and look out for 'pop up' Callister Café events over the summer.

Not quite Paris but just as lively!



Bardsey with Collingham Mothers' Union

Brenda Sanderson

A speaker recently described her visit to our meeting as 'a chat with friends'. If anyone in the village would like to do just that, please let me know.

Unfortunately, the April meeting had to be cancelled as Covid was rife in our membership, so we were delighted to all be together in May.

Branch Leader Elizabeth brought attention to the importance of our community and told us of the knitted teddy bears which are being given at baptisms; the charity 'Baby Basics' at Ireland Wood, and the 50th Wedding Anniversary service to be held in Ripon Cathedral on 11 June.

The speaker Lynn Tugate needed no introduction and talked of 'Just a Lass from



Crossgates'. What an interesting life and career she has led, latterly working for Lord and Lady Harewood and prior to that she held positions of authority, and enjoyed them all.

8 June

Ailsa Read will tell of the 'Ladies of Pendle' which we look forward to very much.

13 July

This meeting has yet to be arranged but I can guarantee it will be interesting and friendly, so do go along.

Meetings are always held on the second Thursday of the month, in the Callister Hall at 2.15pm. Visitors always welcome.

Holiday Eco Highlights

Elizabeth Otty

Tips for being 'green' this summer

Eco-friendly travel is becoming increasingly popular as more and more people become aware of the impact their holidays have on the environment. Whether you're planning a weekend getaway, or a longer trip this year, there are many ways you can reduce your 2023 holiday carbon footprint.

- * Take your holidays locally, or if you really must travel abroad, go by land. Air travel is very expensive in terms of CO₂e emissions!
- * If you travel by car drive at 60mph on the motorway and 50mph on main roads and you'll save 10% on fuel and emissions.
- * Think twice before you book a cruise: the environmental impact is even greater than a flight with emissions of 640g per person per mile.
- * If you are staying away choose carefully. Depending on the level of luxury, (for example types of foods served and energy wasted on excess heating, etc.) your stay away could cost you between 3 - 60kg of CO₂e per person per night. Under canvas is always good if you can manage it!
- * Avoid packing items that you don't need, instead, try to pack items that can be worn or used in multiple ways and remember it's important to stay

hydrated when travelling but avoid the tendency to buy bottles of water. Always carry your own reusable bottle wherever you go.

- * Going for a day out to the beach? Take a bag in your pocket and pick up any litter you see.

Have a happy and eco-friendly holiday in 2023!

Both All Hallows and Saint Mary Magdalene are on their own **eco journey**. Please join us by checking the environment page on our web site, and make a personal commitment by taking the **eco pledge challenge**. Or for more information contact the parish office.

www.bardseyekparish.com/eco

CO₂e (carbon dioxide equivalents) represents total greenhouse gas emissions, not just carbon dioxide (CO₂).

Climate Sunday

In a change to the previously advertised date we are now celebrating Climate Sunday on Sunday 4 June (World Environment Day is 5 June).

As part of our worship, we'll be thinking about our response to the environment, and listening to our guest speaker, Rev Dr Jan Goodair, who is the Area Environment Champion for the Leeds Episcopal Area.

We take environmental matters very seriously. Having achieved A Rocha Eco bronze and silver status in both churches, we are currently working towards gold. For more information about Climate Sunday, please contact the Parish Office.

Also save the date for our 'Green Fair' on Saturday 9 September.

Churches Count on Nature

Liz Parr

Churches Count on Nature 2023 is part of Love Your Burial Ground Week.

Saturday 3rd to Sunday 11th June

It is a joint initiative promoted by Caring for God's Acre, the Church of England, the Church in Wales and A Rocha UK, focusing on the brilliant wildlife to be found in churchyards.

At St Mary Magdalene we continue to improve biodiversity in our churchyard and have added three more fruit trees to our orchard. In our wild area earlier this spring



there was large display of primroses which had previously been suppressed by the mowing regime, and the number of different flowers and grasses continues to increase.

During this celebratory week we plan to update the survey of species in our churchyard as part of a Caring for God's Acre project which feeds into a national database. We also hope to welcome Bardsey Beavers to explore our churchyard during that week.

Wetherby Choral Society **Summer Gala Concert** with YEP Brass

7.30pm, Saturday 24 June 2023
St James Church, Wetherby

Join us for a gala concert of stunning choral
and brass music spanning five centuries

Tickets are **£17** (under 18s free) and are available from the
Ticket Manager on **07443 466254** or by emailing
tickets@wetherbychoral.org.uk
or from Nicolla Florist on **01937 585233**



BARDSEY GALA

BARDSEY SPORTS CLUB
SUNDAY 27TH AUGUST
STARTS AT 1PM
FREE ENTRY

★ **MINITURE RAILWAY**

★ **BOUNCY CASTLE**



★ **DUCK RACE**



★ **CLASSIC CARS**

★ **TUG OF WAR**

★ **TOMBOLA**



★ **BBQ**

★ **AND MORE...**



Bardsey Gardeners

Hannah Tebbett



I can quite see why May is a commonly chosen 'favourite month' - especially amongst gardeners. All over the garden plants and flowers are exploding - horse chestnut leaves, out of their sticky buds; peonies, from their bulbous casings; irises, from their conical stems.



Our plant sale on 29 April was a great success. Very many thanks to anyone who grew and donated anything, and also to the WI for providing stonking teas as ever. We will be ploughing our funds back into running events and gardening projects.

We are in the final stages of agreeing with All Hallows church to plant some fruit trees in The Glade behind the churchyard. I have scoped out cherries, pears and plums to plant for use of the community and the wildlife. Planting will commence in the autumn.

We have recently set up our own online shop where you may pay for your annual membership or for events. Find us at; www.bardsey-gardeners.sumupstore.com

Please save the date for our Annual Show on 2 September, 1.30 - 4.00pm.

The show will have the theme of '**Ee Ba Gum - It's Yorkshire!**' - we're going dotty for all things Yorkshire!

In the cookery classes we have a parking cake, curd tarts and Fat Rascals, and the guest jam class this year is rhubarb. We are also introducing a new class this year - 'the tallest weed'! (Hardly any effort required) and also 'Amusing Vegetable' - so don't throw away that twisted carrot or split potato - we're giving away the largest pumpkin trophy for the vegetable that makes us laugh the most.

We are also having themed photography classes:

- ♦ Yorkshire through a window
- ♦ Iconic Yorkshire Landmark
- ♦ A Yorkshire resident (human)
- ♦ The Black Sheep
- ♦ Yorkshire Foodie

...and handicrafts:

- ♦ A black and white picture in any medium with the theme 'Yorkshire'

Look out for show schedules appearing in community spaces and local shops soon.

If you're not already a member of Bardsey Gardeners you may join at any of our events. It is an annual charge of £5 for an individual and £10 for a whole household. Members have access to our open gardens and discounted prices for events - **plus** members may now borrow our affiliate card that offers you and a friend 50% off the entry price to any RHS garden. That's £15.20 you would save on a visit to Harlow Carr!

East Keswick Parish Council

News and meeting updates for March and April 2023

Parish Council (PC) AGM

The AGM will be held on 20 June in the village hall. Drinks and nibbles from 7.30pm with the meeting starting at 7.45pm. All residents are invited and encouraged to attend, to receive an update on PC activities over the last 12 months, as well as forthcoming projects.

Allerton Drive Junction: Cllr Groves has been in discussion with LCC to improve signage at this junction. Additional signage is now in place and rumble strips have been installed on Crabtree Lane to slow traffic approaching the junction.

Bus Stop at Hillcrest: Collingham with Linton PC had approached EKPC to help pay for bus stop improvements. It was established that the bus stop fell within Collingham parish boundary and that LCC would fund cost of works.

Queen Elizabeth II Memorial Tree & Planters: A memorial copper beech is to be planted at Crabtree Lane car park and planters are to be installed at the car park and opposite 'The Duke' to commemorate the life and service of Queen Elizabeth II.

East Keswick Sports Association: Cllr Groves has been in communication with both the Football Association and the Yorkshire Cricket Board (YCB) regarding funding opportunities for the ground. YCB confirmed no funding is available.

A land survey is being sought to assess the state of the pitches. Wetherby Cricket Club is closing and is selling off equipment. Cllr Groves is making enquiries to purchase equipment for EKSA.

Cllr Groves is currently taking on the task of cutting the grass and preparing the cricket pitch on a weekly basis.

The Coronation of King Charles III: The village was decorated with flags and lamp post plaques and numerous street parties took place to celebrate the occasion. The Village Hall provided facilities, free of charge, over the weekend and a well attended 'Celebration Tea' was held on Monday 8 May. Thanks go to Janet Thornton and Cllr Waterfield for organising the event.

Playground Repairs: A costly quote has been provided by Wicksteed to carry out repairs. It was decided to ask Matthew Harrison to quote for and carry out repairs, at some considerable cost saving. The equipment is now repaired and fully operational.

Newcomers Lunch: The PC is to look at organising a lunch to welcome new residents to the village. It has been a considerable length of time since the last event. The PC will identify and contact new residents once a date and venue has been organised.

Bardsey and East Keswick Running Club



With some incredible performances from club members so here is a shout out to them all.

- * John, Will and Dave competed in the Dewsbury 10K
- * Morag competed at the Boston Marathon
- * Jo and Liv competed at The London Marathon
- * Debbie competed at the Cookridge 10K
- * Victoria, Hannah and Mike competed at the Rudding Park 10K
- * Richard, Dave and Tom competed at the Leeds Marathon
- * Jake, Helen and Jane competed at the Leeds Half Marathon

We also had 16 members competing at the Shadwell 10k and have a strong presence every week at the local park runs. However, our club isn't just about competitions, we have many members who just come for fitness and social runs, so come along and see what we're all about.



Find us on Facebook or give us a call on **07508 601294**

**BARDSEY & EAST KESWICK
RUNNING CLUB**
YOUR PACE OR MINE

Bardsey Sports Club Coronation Picnic

After waking up to torrential rain on 8 May we couldn't believe the turnout for our first social picnic at Bardsey Sports Club.

All morning we kept saying "if we build it, they will come" in the hope the day and our efforts weren't going to be a washout. From constructing the large balloon arch and getting soaked to the bone raising the marquee and decorating the building we waited with anticipation for 2pm and the event to begin.

And come they did. Despite the bouncy castle and kids' races being cancelled everyone still had a great time. Croquet was a hit, the

Village Voices sang their hearts out, music played, Pimm's was drunk, faces were painted, and the quiz confused. It was a true celebration of everything British and how we make the most of inclement weather and still have fun.



A big thank you to all who came to our first social picnic and made it a huge success.

Diary Dates

JUNE		JULY	
3-11	Love Your Burial Ground Week	5	Golden Plover Garden Party
4	Climate Sunday	9	EKWT Family Pizza Day
5	World Environment Day	11	EK WI, 2.00pm
8	Mothers' Union, 2.15pm	11	Callister Café, 12.45pm
13	Callister Café, 12.45pm	12	Bardsey-cum-Rigton WI, 7.30pm
13	EK WI, 2.00pm	13	Mothers' Union, 2.15pm
14	Bardsey-cum-Rigton WI, 7.30pm	19	Bardsey Parish Council, 7pm
20	EK Parish Council AGM, 7.30pm	22	Bardsey Parish Walk, 2pm
21	Bardsey Parish Council, 7pm	27	EKMC Souper Thursday, 12 noon
24	WCS Summer Gala, 7.30pm		
29	EKMC Souper Thursday, 12 noon		

Village **Groups** and **Facilities**



Bardsey Sports Club

CRICKET – FOOTBALL – RUNNING - YOGA

- Members bar
- Secure, free, off-road parking
- Function room and grounds available for hire

For more information contact Jo at:
bardseysportsclub@gmail.com
07807 217663

NEW MEMBERS ALWAYS WELCOME

The **HALL EAST KESWICK**



The perfect venue for all occasions with spacious function rooms, ample parking and disabled access

STAGE - BAR - KITCHEN
 TERRACE - EVENTS FIELD

www.eastkeswickvillagehall.org

Bardsey Nursery

For pre-schoolers aged 2-5 all year round, 07.30 - 18.00.

We also offer wraparound care and holiday clubs for school children.

Our bright airy space and wonderful leafy grounds are just perfect for exploring. Come and say hello!

Bardsey Primary School

01937 573999

bardsey@childrenscornerchildcare.co.uk



CALLISTER HALL

WOODACRE LANE, BARDSEY

For private functions and meetings

Well-equipped kitchen available.

For bookings and current hire rates please contact the Parish Office.

01937 574273

bardseyparishchur@btinternet.com



METHODIST CHURCH

MAIN STREET - EAST KESWICK



MEETING ROOMS FOR HIRE

Seating for up to 80 people • Fast broadband • Large screen TV with full connectivity • Well-equipped kitchen • Modern cloakroom facilities • Secure garden with two patio areas and outdoor furniture

For bookings and current rates contact Donah:

01937 574603 / 07914 043836

For further details visit our website: www.ekmc.org.uk

VOLUNTARY TRANSPORT GROUP

Please get in touch if you need transport to the hospital, the doctors, the dentist or prescription collection, shopping or a hairdressing appointment. We also have wheelchairs for loan.

In Bardsey Call:

Pauline Hills on 573083 / 07535 692366
Lynn or Brian Tungate on
574679 / 07921 777790

In East Keswick Call:

Susan Priestley on 572227 or Gaynor Anning on 572890

BARDSEY VILLAGE HALL

BOOKINGS - ROSIE STENTIFORD

01937 572652

Main Hall • Stage • Kitchen • Carpark
AVAILABLE FOR HIRE

NEEDLE AND THREAD GROUP

Third Monday of the month in East Keswick Village Hall from 1.00 - 4.00pm.

All types of needlework. Come and join us to learn or share skills and socialise. For further information please contact Heather on

07747 145422

Trade and Services Directory



David is the epitome of everything a trustworthy efficient & reliable P.A. should be. Effective at saving me both time & money. A rare find & an invaluable asset to my household.

AB - Bardsey

HELP! is just a 'phone call away

David Bransby
your-p-a-leeds.co.uk
07853 257 662

NEED HELP WITH A COMPUTER/SMARTPHONE/TABLET/TV?

I come to you • Windows setup & support • email help • PC tune up • one-to-one tuition • PC/laptop • data backup & transfer • smartphone/tablet/printer/broadband/wi-fi support

Thinking of buying a new computer/smartphone/tablet/printer/TV?

Speak to me first for advice on buying the right item at the right price.

Improve your online security

Have you been hacked/scammed? Forgotten passwords?

Paying too much for broadband/TV/landline/mobile contract?

I may be able to get you a better deal. You could save BIG money £££

Need help with TV setup/retune or getting Netflix, Amazon Prime, Disney+, Paramount+, catchup TV (BBC iPlayer/ITV/C4, etc.)? Setup and learn to use Amazon Echo, Fire Stick, Kindle, WhatsApp, Skype, Zoom and much more besides.

Contact **Lee Goodman** for more information (Est. 2009).

lee_gee66@hotmail.com / 01132 698466 / 07941 281558

Silk Painting Workshops

For beginners and experienced alike.

Jewel-like inks, together with gold, silver, & copper, combine to create the most exquisite effect. Designs provided.

Six hour workshop only £45.

For more information contact **Pat Willard** on **07790 630448**
Scarcroft based

BARDSEY ARTS

A new art school for beginners or experienced artists, in a dedicated studio with professional tuition.

For further details of classes or individual teaching contact:

07831 326309

ailsaread1@gmail.com



£895 • COMPACT UP TO 2.4M
• WHITE
• FITTED PRICE



£2,740 • PREMIUM 5.1M
• BLACK
• FITTED PRICE

Improve, don't move!

Maximise the value of your home.

It's time to upgrade your garage door to a Garolla.

We've been trusted by 100,000 customers to transform their home. It's no wonder we're the most recommended on Trust Pilot and Check-a-Trade, so you can rely on us when we say we are the UK's number one! Our straightforward approach is backed by our trusted local engineers who are on-hand to guide you through the whole process.

From our door, to yours.

- SPACE-SAVING – MAXIMISE GARAGE HEADROOM
- SECURITY-ENABLED AUTO-LOCKING SYSTEM
- CHOICE OF 21 COLOURS TO MATCH YOUR HOME
- REMOVAL AND RECYCLING OF YOUR OLD DOOR
- DEDICATED GAROLLA AFTER-CARE TEAM

Yell
4.8 out of 5

Checkatrade
Where reputation matters
9.8 out of 10

Trustpilot
4.8 out of 5 / 5,000 reviews

GAROLLA
ELECTRIC GARAGE DOORS

T: 01937 420 034
Lines are open 7 days a week

Online at: www.garolla.co.uk

BESPOKE ELECTRIC DOORS
MANUFACTURED IN THE UK

Buywell interiors

Fitted Kitchens, Bedrooms and Home Office Solutions



BUY LOCAL - BUY BRITISH - BUY WELL

UNIT 155, AVENUE B,
THORP ARCH ESTATE, LS23 7BJ

Tel: 01937 844288
www.buywellinteriors.co.uk

THORNER FLOORING SERVICES

ALL TYPES OF FLOOR COVERING SUPPLIED AND FITTED

CARPETS • RUGS • VINYL • WOOD



THE MOBILE SHOWROOM
1000'S OF SAMPLES BROUGHT
TO YOUR DOOR

8 St. Peter's Garth
Thorner, Leeds
LS14 3EE

01132 892344
07774 171744

craig@thornerflooring.co.uk
www.thornerflooring.co.uk

Find us on

CABINET MAKER / FRENCH POLISHER

Also floor sanding and re-polishing

Edward W. Vickerman

01132 738242

247 Main Street, Shadwell, Leeds, LS17 8LA



S.P. Harrison

Painting & Decorating

Quality paperhanging & painting

01132 813956 / 07961 181848



We are currently selling homes in Bardsey and East Keswick quickly. If you are considering moving, now could be a good time to put your home on the market.



For a FREE valuation simply visit www.furnellresidential.co.uk and click the INSTANT VALUATION link



furnellresidential

ESTATE AGENTS & PROPERTY CONSULTANTS

your home, our business

Hill Barn, Cornmill Lane, Bardsey LS17 9EQ t: 01937 574 685

e: info@furnellresidential.co.uk w: furnellresidential.co.uk

PROUD TO BE SUPPORTING



If you have instructed another agent on a Sole Agent basis, the terms of these instructions must be considered before contacting us.

GREYSTONES - STAITHES

Furnished holiday home to rent in the heart of the old village on the picturesque East Coast.

Sleeps 9 in 5 bedrooms (1 En Suite)

Ideal for long weekends, midweek breaks and family holidays.

01937 574177 / 07850 704344

www.greystones-staithes.co.uk



HEATING OIL DIRECT TO YOUR HOME

STORAGE TANK SUPPLY AND INSTALLATION
EMERGENCY SERVICE & SATURDAY DELIVERY

WWW.TATEOIL.CO.UK

CALL: 08456 43 44 43

LEEDS ROAD, OTLEY, W. YORKS, LS21 3BB



Door & Window Repair • Lock Upgrades
• Garage Locks & More

07721 876571

www.lemonlocksmith.co.uk



LOCKFARR LOCKSMITH & CCTV

Norman Farrar

MPL NATIONALLY TRAINED LOCKSMITH
FULLY TRAINED CCTV INSTALLER

07760 111418

norman_farrar@hotmail.com

Find us on Facebook – Lockfarr Locksmith and CCTV



MODERN CLASSICS

DEVELOPING EXCLUSIVE NEW BUILD AND CONVERSION HOMES IN THE BEST LOCATIONS

To discuss how we can unlock the value of land or buildings that you may wish to sell or for details of forthcoming developments please contact our award winning team.

0113 268 3416

info@parklanehomes.co.uk

www.parklanehomes.co.uk

SCAN FOR



WEBSITE

HYLAND BUILDERS LTD EST 1974

Building, Roofing and Glazing Contractors

DOMESTIC, INDUSTRIAL AND COMMERCIAL - EXTENSIONS & ALTERATIONS
SPECIALISTS FOR ALL YOUR BUILDING AND MAINTENANCE NEEDS

Flat Roof Specialists • Roof Repairs (strip & recovers) • Replacement Windows & Double Glazing • Drainage Drives • Garden Walling • Paving (slab or block) • Fencing • Landscape Gardening • Plastering • Pebble Dashing • Pointing • Guttering & Fall-pipes • Painting & Decorating • Security Services • UPVC, Facias & Cladding

LEEDS CITY COUNCIL APPROVED - GRANT WORK - ALL WORK GUARANTEED

24 HOUR EMERGENCY SERVICES FOR GLAZING, PLUMBING & BLOCKED DRAINS

(The impossible we can do immediately, miracles take a little longer)

FOR ADVICE AND PERSONAL ATTENTION CALL

07710 099596 or 01937 572596 (24hrs)

10 ROSE CROFT, EAST KESWICK, LEEDS, LS17 9HR





SFR PLUMBING & HEATING

Contact Stefan

07833 476 252

www.sfrplumbingandheating.co.uk
sfrplumbingandheating@gmail.com

- * New Boiler Installations & Service
- * Cookers & Fires
- * Landlords Gas Safety Certificates
- * Invented Systems

- * New & Replacement Radiators
- * Power Flushes
- * Shower & Bathroom Suites
- * Tiling
- * Repairs & Maintenance



SAM WATTS

ALL PLUMBING INSTALLATIONS
AND REPAIRS

Free estimates ▪ No call out
charges ▪ No job too small ▪ City &
Guilds certified

07759 060709



Professional
PLUMBING & HEATING
Engineers



Bathrooms ▪ Glazing ▪ Gas Installations

M. MARTIN

(ENG TECH, LCGI, MCIPIHE, RP, GAS SAFE REGISTERED)

Established 1981 - Fully Insured

01132 737197 / 07850 971471

www.leedsplumbingandheating.co.uk
enquiries@leedsplumbingandheating.co.uk
707 Shadwell Lane, Shadwell, LS17 8ET

ANTHONY SHORTALL

Your local

PAINTER & DECORATOR

City & Guilds Qualified
Apprentice Trained

No job too small or too large

01133 930960 / 07711 706679



EC Electrical
Installations

Eddie Clayton
Electrician

All aspects of electrical work taken

07946 745753

eddie_c_7@hotmail.com

Local Electrician

LS22 Electrical Ltd

(Est. 1982 - Collingham)

- ✓ ALL ASPECTS OF DOMESTIC ELECTRICAL INSTALLATIONS
- ✓ NEW INSTALLATIONS, ALTERATIONS & REPAIRS
- ✓ TELEPHONE & COMPUTER CABLE INSTALLATIONS & REPAIRS
- ✓ NO JOB TOO SMALL!!!
- ✓ COMPETITIVE, EFFICIENT, TIDY & FRIENDLY SERVICE

For advice or to arrange a visit call Geoff on

07791 844305

E: service@ls22electrical.co.uk





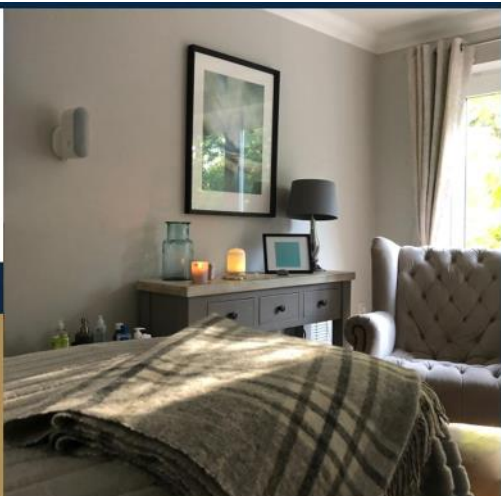
Wood View

SPORTS MASSAGE & HOLISTIC THERAPIES

Relax | Renew | Revive



Sports Massage
Therapeutic Massage
Aromatherapy Massage
Reflexology



**Practicing from Hetchell Court in Bardsey
Weekdays 9am to 9pm and Saturday 9am to 3pm**

07590 950083

**www.woodviewtherapies.co.uk
3 Hetchell Court, Bardsey, Leeds LS17 9BY**



COUNSELLING - ADRIENNE CREW (MBACP)

Registered member of the British Association for Counselling & Psychotherapy
Counselling can provide valuable support when there is a crisis.

I can offer help with the following;

**RELATIONSHIPS ■ COUPLE COUNSELLING ■ DEPRESSION
BEREAVEMENT ■ WORK LIFE BALANCE ■ ANXIETY ■ ANGER ISSUES
■ LOW SELF-ESTEEM**

Tel: 07715 267676 Email: adrienne.e2@gmail.com

www.adriennecrew.co.uk

The Complete Funeral Service - Est. 1808



G.E. HARTLEY & SON LTD.

Family Run Business - 24 Hour On-Call Service
Monumental Masonry - Pre-paid Funeral Plans

www.gehartley.co.uk

WETHERBY
66 Westgate
LS22 6NJ
01937 588888

GARFORTH
62a Main Street
LS25 1AA
0113 286 2980

CHIROPODIST - HOME VISITS

PAULINE HUGHES
MSSCh REG.

07745 950528

SCARCROFT - LEEDS LS14 3BS

Hair by Kathryn
MOBILE HAIRDRESSER
07767 692052

Andrew Morgan Opticians

NHS & Private eye examination / Contact lenses / Wide range of spectacle frames / ZEISS, ACUVUE® & Lens specialists

HOME VISITS AVAILABLE

01937 849933

170 High Street, Boston Spa

www.cowenmorganopticiansripon.co.uk

EKOne HAIRDRESSING

BESPOKE COLOURING & RESTYLING



**STATE REGISTERED
MASTER CRAFTSMAN**

Professional salon environment, with off road parking

Call **Elaine** on

**01937 572550 /
07762 024229**

3 The Grove,
East Keswick

Bardsey Landscape and Garden Services

Grass Maintenance ▪ Patios & Paving ▪ Fencing & Hedging

Call Andy on

01937 573160

07964 180975

Bardsey based - City & Guilds
NPTC



**Adrian Wood
Boston Spa
Garage**

SERVICING CARS LOCALLY FOR OVER 30 YEARS

 Moor End, Boston Spa, Wetherby LS23 6ER
Tel: 01937 844400



**BODY SHOP
REPAIRS**

**All types of Accident
and Repair Work**

Unit 10 Erivan Park, Sandbeck Way, Wetherby LS22 7DN
Tel: 01937 580700

DALBY LANDSCAPES

Landscape gardening, fencing & general garden maintenance ▪ Weekly, fortnightly or one-off garden tidy ▪ All aspects of tree services undertaken

Nigel Dalby 07752 586566

Ben Dalby 07840 442628

01937 574583

www.dalbylandscapes.co.uk

Gillbeck Associates Ltd

ACCOUNTING / BOOKKEEPING
/ TAX & PAYROLL

A professional service at very affordable rates - let us save you money!

01937 585432

enquiries@gillbeck.co.uk

GRAHAM LANDSCAPES

Drives & Decking • Fencing & Walls •
Gardens & Gates • Patios, Pergolas &
Paths • Paving & Power Washing •
Resin Bound Gravel • Turfing & Tidying

The award winning
garden builders

01937 580607 / 07752 093361

Free advice & estimates • 12 month guarantee • £2 million liability cover



LANDSCAPING SERVICES LTD
landscape & fencing contractors

Local, reliable and professional services for all
aspects of hard and soft landscaping
For more information and a FREE ESTIMATE call

01937 579117

jmaservicesltd@yahoo.co.uk
www.jmalandscaping.co.uk

Parker Hartley & Co

Incorporated Financial Accountants

Services provided:

- ✓ Advice on setting up your business
- ✓ Annual accounts preparation
- ✓ Bookkeeping and preparation of VAT returns using MTD
- ✓ Payroll and auto enrolment
- ✓ Tax returns

T: 07723 027301

E: info@parkerhartley.co.uk
www.parkerhartley.co.uk



BARDSEY TREE SERVICES Ltd 01937 573689

Tree Surgeons & Arboricultural Contractors

- All aspects of tree surgery & felling
- Hedge cutting/removal
- Stump grinding
- Site clearance for the Construction Industry
- Suppliers woodchip
- TPO/Conservation area checks
- Tree Surveys & Reports/Free Estimate
- Emergency Call Out
- £10 million Public Liability Insurance

www.bardseytrees.co.uk

info@bardseytrees.co.uk

Director: Andrew R Ward

The Village News magazine is published bimonthly by the Parochial Church Council of the Ecclesiastical Parish of Bardsey with East Keswick and distributed free of charge to all households in the Parish. However to help cover the cost of printing and administration a donation of £1 per copy would be appreciated. See our website for different ways to contribute;
www.bardseyekparish.com/giving

A digital copy of the magazine can be viewed or downloaded from the parish website and is also available by email on request.

We welcome contributions from our village communities, relating to news,

events and topics of interest, for possible inclusion in the magazine, without charge, which would be published at the discretion of the editorial team.

Please send entries for inclusion to:
bardseyecc@gmail.com

Copy deadline for the August - September 2023 edition is Friday 14 July.

If you missed previous editions you can still find them on the parish website.

Please note, articles in this magazine express the views and opinions of diverse groups. They do not represent a formal policy of the Church.

The Parish of Bardsey with East Keswick

Incumbent: Revd Angela Hannafin

All Hallows Church

Church Lane, Bardsey, LS17 9DH
Churchwarden: Jacquie Earnshaw
01937 574877

Saint Mary Magdalene Church

Moor Lane, East Keswick, LS17 9ES
Churchwarden: Fiona Siekierkowski
01937 572836

Parish Administrator: Catriona Brent

Parish Office
Callister Hall, Woodacre Lane
Bardsey, Leeds, LS17 9DG
T: 01937 574273
E: bardseyparishchur@btinternet.com

www.bardseyekparish.com

Registered charity Number 1134014

This magazine is printed on fully recyclable paper, by an ISO 14001:2015 certified printer using FSC (Forest Stewardship Council®) paper stock.

