

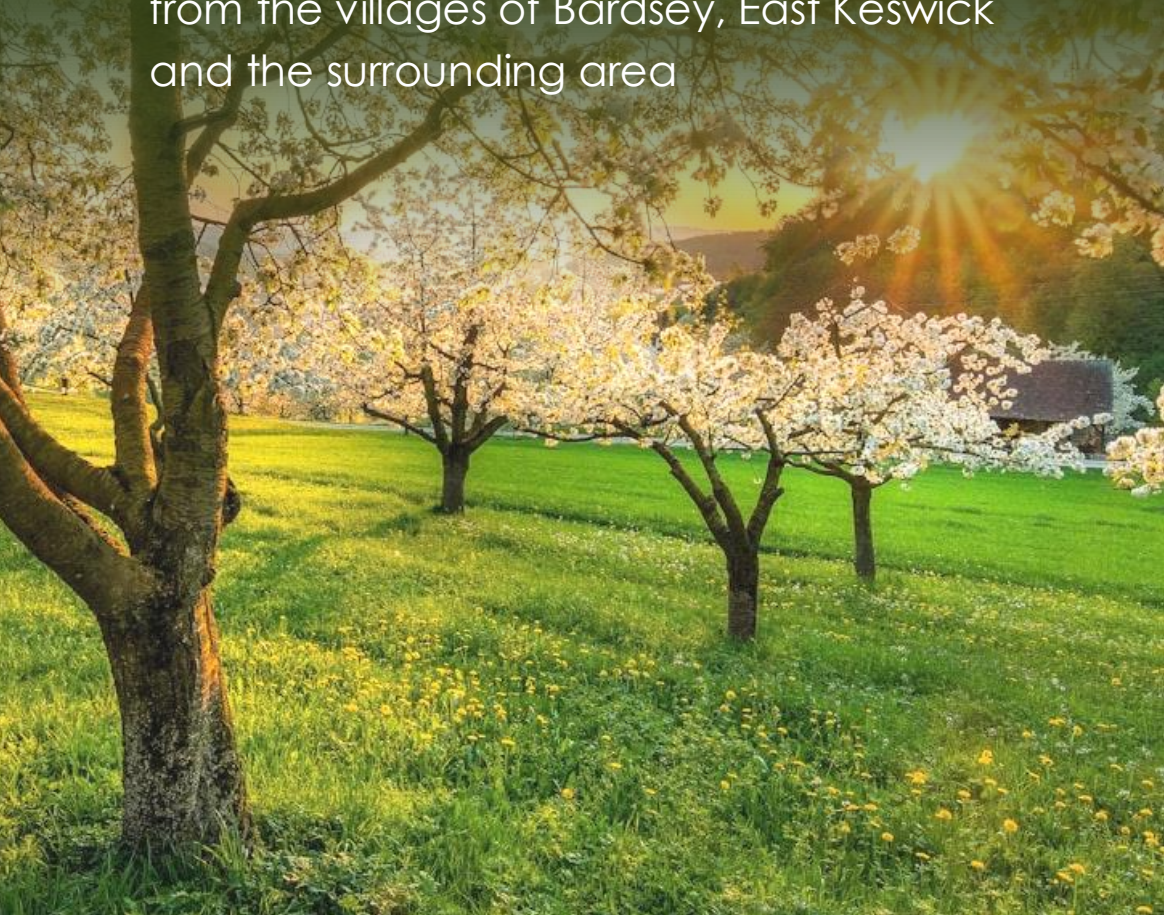
THE PARISH OF BARDSEY WITH EAST KESWICK

Village News



APR – MAY '24

A round up of church news and activities
from the villages of Bardsey, East Keswick
and the surrounding area





LANDSCAPING SERVICES LTD
landscape & fencing contractors

Local, reliable and professional services for all aspects of hard and soft landscaping
For more information and a FREE ESTIMATE call

01937 579117

jmaservicesltd@yahoo.co.uk
www.jmalandscaping.co.uk



Bardsey Garden Services

Grass Maintenance • Patios & Paving
Fencing & Hedging

Call Andy on

01937 573160

07964 180975

Bardsey based - City & Guilds NPTC

Parker Hartley & Co

Incorporated Financial Accountants

Services Provided

- ✓ Advice on setting up your business
- ✓ Annual accounts preparation
- ✓ Bookkeeping and preparation of VAT returns using MTD
- ✓ Payroll and auto enrolment
- ✓ Tax returns

07723 027301

info@parkerhartley.co.uk

www.parkerhartley.co.uk



GRAHAM LANDSCAPES

- Drives & Decking
- Fencing & Walls
- Gardens & Gates
- Patios, Pergolas & Paths
- Paving & Power Washing
- Resin Bound Gravel
- Turfing & Tidying

Free advice & estimates
12 month guarantee
£2 million liability cover

01937 580607

07752 093361

The award winning garden builders

Dalby Landscapes

Landscape gardening, fencing & general garden maintenance • Weekly, fortnightly or one-off garden tidy • All aspects of tree services undertaken

Nigel Dalby **07752 586566**

Ben Dalby **07840 442628 / 01937 574583**

www.dalbylandscapes.co.uk

CABINET MAKER / FRENCH POLISHER

Also floor sanding and re-polishing
Edward W. Vickerman

01132 738242 / 07917 224455

247 Main Street, Shadwell, Leeds, LS17 8LA



S.P. Harrison

Painting & Decorating

Quality paperhanging & painting

01132 813956 / 07961 181848



Contents

From the Vicarage	4
Funding Our Church Mission	4
Parish Church Services	6
From the Register	7
Coping with Grief	8
Bardsey Gardeners	9
Bardsey Tennis Club Fundraising	10
Café Callister	11
Bardsey Bowling Club	11
The Phantom Runner	11
Bardsey Parish Council Report	12
Bardsey Village Hall AGM	13
Annual Parish Meeting	13
The Children's Society Thanks	13
Eco Chat: Green Transport	14
Green Event Calendar	15
East Keswick Methodist Church Services and Events	16
Souper Thursday	17
East Keswick Flower Club	18
East Keswick WI Update	18
East Keswick Parish Council Report	19
East Keswick Wildlife Trust Update	20
The Illingworth Field Consultation	21
Bardsey Cum Rigton WI Update	22
Services Directory	23
Diary Dates	32

From the Vicarage

Angela Hannafin



Welcome to the April edition of Village News.

No one likes talking about the subject of money, but when it comes to the church, we need to.

Funding our Church Mission

I wanted to let you know that we are holding a fundraising campaign over the weekend of 26-28 April, with the aim of raising £30,000. This is an ambitious amount and no doubt you've got some questions about why we are doing this, so let me try and explain a bit more.

WHY DO WE NEED TO FUNDRAISE?

The mission of the local church is to look after everyone in the parish – that is all 3,500 people. We are here for everyone, regardless of their religion. Through our Sunday services, pastoral care, weddings, funerals, baptisms and small groups, we provide support, hope and Christian love to all those we meet. Many people are helped by the work of the church during significant

times in their lives. It is important that we can keep on doing this.

Whilst we take great care in handling our finances, sometimes there are unexpected things which we have to pay for. Over the last year, we've had several building issues, including wall damage and a serious gas leak, which have impacted our financial situation. Our budget is now running at a deficit and we need to do something to avoid a greater strain.

WHERE DOES THE CHURCH'S MONEY COME FROM?

In case you didn't know, almost all of our finances come from the generosity of local folk who give to us. We don't receive any grants or funds from the Church of England. Our only other regular source of income is rent from the Callister Hall in Bardsey, which goes to the parish.

WHAT OUTGOINGS DOES THE CHURCH HAVE?

Our main, regular outgoing is for church heating. Whilst we've made changes to our service schedule during the colder months, in order to only heat one church, heating is still very expensive and we've got old buildings to heat. It is also necessary to heat the churches for certain events, such as weddings, funerals and baptisms. We also need to pay for our 'share' which goes to support local churches, clergy and training. Every church in the country is asked to provide this money. Our 'share' for this year is around £80,000.

WHAT FUNDRAISING WILL YOU DO?

Over the weekend of **26-28 April**, we'll be organising a number of events, as shown below, and hope that you'll join in.

HOW CAN I GIVE?

At any of these events there will be an opportunity for you to donate to the parish. We have card readers at both churches. You can also give online (see our website www.bardseyeparish.com).

However, if you can't make any of these events you can still give. Any money can be

dropped into the Parish Office in the Callister Hall and you can also speak to the Parish Treasurer, Kathy, via her email bardsey.treasurer23@gmail.com

I hope you will join us as we celebrate all that is good in our parish and aim to raise funds so that our churches can continue to be at the heart of community life.

Every blessing

Angela

FUNDRAISING EVENTS

FRIDAY 26 APRIL

Tea and cakes at the Village Hall, Bardsey, organised by the WI,
2.30pm-4pm

SATURDAY 27 APRIL

'Family Forage' – an event for all the family, starting 12.30pm at St Mary Magdalene (with hotdog lunch), walking through East Keswick and ending at All Hallows (with tea and cake).

SUNDAY 28 APRIL

Bishop Arun will be speaking at a joint parish service at 10.30am at All Hallows, Bardsey. Soup lunch served afterwards and everyone is welcome to stay.

SUNDAY NIGHT

Evening concert at St Mary Magdalene, 7pm. 'A Musical Box of Delights' with Sue Lees and her musical friends and pupils. Tickets £12 in advance only from Parish Office or Fiona Siekierkowski, to include a glass of wine.

Parish Church Services

DATE	LOCATION	SERVICES
WED 3 APR	St Mary Magdalene	11.00am Holy Communion
SUN 7 APR	All Hallows	10.00am Holy Communion
SUN 14 APR	All Hallows	8.00am Holy Communion 10.45am Family Service
	St Mary Magdalene	9.15am Family Service
SUN 21 APR	All Hallows	8.00am Morning Worship 10.45am Holy Communion
	St Mary Magdalene	9.15am Holy Communion
SUN 28 APR	All Hallows	10.30am Joint Holy Communion with Bishop Arun, followed by lunch
WED 1 MAY	St Mary Magdalene	11.00am Holy Communion
SUN 5 MAY	St Mary Magdalene	10am Joint Holy Communion
SUN 12 MAY	All Hallows	8.00am Holy Communion 10.45am Family Service
	St Mary Magdalene	9.15am Family Service
SUN 19 MAY	All Hallows	8.00am Morning Worship 10.45am Holy Communion
	St Mary Magdalene	9.15am Holy Communion
SUN 26 MAY	EK Methodist Church	10.30am Chapel Anniversary Service
SUN 2 JUN	All Hallows	10am Joint Holy Communion

From the Register

We congratulate those who
have been married

CAROLINE WHATLEY AND SAMUEL BAIRD

Saturday 16 March, All Hallows

We remember those whose
funerals have taken place

SHIRLEY BEARD

Wednesday 31 January, All Hallows

GEORGE DALBY

Wednesday 6 March, St Mary Magdalene

JANINE MURPHY

Monday 18 March, All Hallows

Services in memory of

PATRICIA FRENCH

Monday 4 March, All Hallows

The grass is green across the hill,
But yellow blooms the daffodil.
It's sunshine on a little stalk,
A friendly flower, I bet they talk...

It grows warmer every day.
Shoo the children out to play!
Pick the flowers, play in the mud.
Too much rain, here comes a flood!

LH Theaker

Coping with Grief

Adrienne Crew

The late Swiss-American psychiatrist, Elizabeth Kübler-Ross, proposed 'five stages of grief' to help describe the process of grieving. They are, denial, anger, bargaining, depression and acceptance. They are often talked about as if they happen in order but people can experience these stages of grief at various times and they need not happen in any particular order.

Denial

Feeling numb. Some people can continue as if nothing has happened, even when they know in their hearts someone has died.

Anger

A natural emotion. Death seems cruel, especially when you feel someone has died before their time.

Bargaining

This is when a person starts to make deals with themselves. If they act in a certain way, they will feel better, and their loved one will be in a 'better place.'

It is also common to find that the person who is in grief asks many "what if" and "why" questions, wishing they could go back and change things.

Depression

Sadness and longing, resulting in strong pain, comes and goes like waves. Life can feel it no longer holds any meaning.

Acceptance

Back to a new different normal.

After the death of my own son nearly five years ago, new routines helped me ground myself to a new way of life. I started to make goals for the future that once seemed impossible.

I never lose sight of his presence in my everyday life, and this has in turn clearly deepened my counselling work, and my faith.

It is all about rebuilding a meaning to your life, remembering happy times ahead can be had with living loved ones, but always in my heart, my son's death will be part of me, my past, and a significant part of my future.

Adrienne



Bardsey Gardeners

Hannah Tebbett



As I write this spring is getting into its stride and I reckon the blossom is about two weeks earlier than last year.

I hope those of you that garden are enjoying the first few exciting jobs of the year, such as planting some seeds finally. I've got chillies and aubergines already on the window sills. Tomatoes are going in today and then later in the month flower seeds such as cosmos and sunflowers.

My new peach tree in the poly tunnel is covered in pink blossoms and we've been enjoying some overwintered lettuces that are now starting to show new growth.



Peach tree blossom

I'll be bringing some seedlings along to sell at our plant sale in Bardsey Village Hall on **Saturday 11 May**. Donations of plants from 8.30am, refreshments in the Callister Hall from 9.30am and the plant sale itself opens at 10am. We'll also have some stalls this year and we'll be selling a selection of bedding plants. Get there quick, as we always have a queue and are usually pretty well sold out within an hour. Please

consider donating some seedlings, a divided perennial, or even gardening equipment that you have spare.

We have two more events coming up this spring. A talk by the National Garden Scheme (NGS), again in the village Hall, this time 7pm Thursday 11 April. David and Elizabeth Smith own Scape Lodge in Huddersfield and are the NGS scheme coordinators for West Yorkshire. They will talk about the scheme and their own fabulous garden, that they open annually for the charity. There will be refreshments! Free for BG members and £3 for guests.

Then on Friday 14 June we're going to visit the national collection of *Elatum Delphiniums*, at the home of Colin Parton in Methley. Colin has been a lifelong devotee of these beautiful blooms and now opens his collection for charity. There will be a charge of £3 for members and £5 for guests. To express an interest in this trip or the NGS talk please email us at bardsey.gardeners@gmail.com

We will be arranging lift shares so please get in touch even if you don't have your own transport.

Don't forget that we are (almost) the best value club in the village (I see you BEKRC!) as we only charge £5 for annual membership or £10 for a whole household.

Come along to our events with bags of gardening knowledge or none at all – we're a friendly bunch.

Happy Gardening!

Hannah

Bardsey Tennis Club

Thank you to all who attended our Family Friendly Fundraising Event on 2 March and made it such a success.



We managed to raise over £3,000. A big thank you also to all our sponsors and local businesses, who donated prizes. We are currently running a crowdfunding page to raise

more money for resurfacing the courts and hopefully a new clubhouse in the future.

www.crowdfunder.co.uk/p/bardsey-tennis-club-court-resurfacing-project

We are a friendly club offering social tennis for all ages and abilities, as well as team matches in the local league, for the more competitive.

Fully qualified tennis coaching is available, with weekly junior and adult drop-in sessions, catering for all ages and abilities. Also open to non-members.

Free, new tennis balls are provided for all club sessions, and there is hot water and tea/coffee making facilities in the clubhouse.

We look forward to welcoming new and old members joining our club. The fees are good value at £65 per year for adults, £130 for a family and £20 for Juniors. For further details contact: bardseytenniscoaching@gmail.com or visit our website

www.bardseytennisclub.co.uk

Bardsey & East Keswick Running Club



After another BEKRC eight week 'Couch to 5K' program we had eight successful graduates completing the Wetherby Park Run, all of who are now running regularly with us. Here are some testimonials from our graduates

"Dare I say it... I loved it and I'm now running with the club every week. After having a baby nine months ago BEKRC have helped me build my running habits, with the perfect level of accountability and support with no pressure except to simply try my best."

"Since joining the BEKRC 'Couch to 5K' program I haven't looked back. The support and encouragement I received really spurred me on. I now run regularly with the club and have entered a few 10K races! I love the feeling I get from running and 100% recommend this club."

"I had often thought about joining a running

club but thought my ability wouldn't be good enough. I saw the BEKRC Facebook post and decided to give C25K a go. The club was so welcoming, they encouraged me every week to do my best to achieve the 5K and for me it was an amazing accomplishment when I actually did it. I now run the normal club sessions. They are so lovely and friendly and even though I am the slow one at the back it never feels as though I am because they always look after me."

Our Sessions are: Mondays at 6:30pm; Wednesdays at 7:30pm; Fridays at 9:20am; Sundays at 10am.

Why not come and join us, whether you are a recreational runner just wanting to keep fit or training for your next marathon we are here to support your needs. Contact us via Facebook.



Soup Lunch @ Café Callister

Tuesday 9 April & 14 May
12.45-2pm, Callister Hall, Bardsey

Bringing the community together

Join us for a soup and pudding lunch.
Open to anyone who lives locally. No
charge, but donations to St Aidan's
Foodshare are welcomed.

Contact the Parish Office for more details
on **01937 574273**



Bardsey Bowling Club

**The bowling season is now underway and
we would like to invite you to come and
try bowls at Bardsey.**

We are a social minded club and our teams
play on Wednesday and Friday afternoons
and on Monday and Thursday evenings.

You are more than welcome to visit us
when one of our matches are playing or
come down on a Tuesday afternoon when
our social bowling group play.

Contact Andy on **07910 195227**

www.bardseybowlingclub.com

The Phantom Runner

Around 4am every morning for many years
a light appeared bobbing along the road
past All Hallows Church, in Bardsey,
travelling West to East. Then the runner
suddenly disappeared, only to reappear
recently at 4.35am each morning.

The runner keeps to the middle of the road,
sporting a white light on the head and red
one on the back, recently converted to LED!

Where has the runner been and where is
the runner going? Has anyone else spotted
this phenomenon or am I the only 'Sleepless
in Bardsey'?

Have you seen the phantom runner? Let us
know at **bardseypcc@gmail.com**

Bardsey-cum-Rigton Parish Council Report

Cllr. Linda Flockton



PARK FIELD

During the winter months further work has been carried out, and the steps near the playground, which go up to the old railway embankment, have been concreted in to ensure that the area is made safer.

Penny Barber, leader of our Friends of Park Field Group continues to organise necessary work to remove invasive species, whilst leaving natural areas of fallen limbs of trees, log piles, etc., in order to provide mixed habitats for birds, small animals, bugs and fungi.

There are open grassed areas where children can play and perhaps kick a ball around and also benches for people to sit on.

There are many responsible dog owners who walk their dogs and appreciate the tranquillity, however, recently we have received several complaints about dog fouling in Park Field. There is absolutely no excuse for this because there are so many bins specifically for this purpose. Please can we ask that you pick up all dog faeces and put them in the bins provided and consider other people who use this area.

Keswick Lane: There have been many complaints about dog fouling on the pavement and also the grass verges on Keswick Lane. Again, please can we urge you to pick up all dog faeces, double wrap them and place them in any LCC bins or take them home and place in your own dustbins.

A58: Unstable trees between Church Lane and Cornmill Ginnel. We have reported to LCC several times that there are unstable

trees and branches falling onto the grass verge, pavement and road. LCC replied that street sweepers had been out to clear up the debris but ultimately it is the responsibility of the owners of the houses which back onto the A58 because the old railway banking is on their land and the trees belong to them. Please can these residents have a tree specialist look at the trees and have them reduced in height or cut down where necessary, as it is your liability.

BIODIVERSITY

The Parish Council are looking into what we can do to conserve and enhance biodiversity throughout the Village. We will be considering what has been done so far and making decisions on future objectives.

Hedgehog Highway Project: We have now purchased a box of 50 hedgehog highway surrounds, which are made from recycled plastic and we hope to make them available to residents. A Hedgehog Highway is a five inch gap in a fence and is essential in the battle to prevent their extinction. For more information, please read about the project at: www.hedgehogsrus.co.uk/hedgehog-highway-project

Our Annual Parish Meeting will take place on **Wednesday 24 April** at 7.30pm directly after the Village Hall Management Committee AGM which begins at 7pm, which will in turn be followed by the regular PC meeting at 8pm.

The following PC meeting will be held on **Wednesday 15 May** at 7.00pm in Bardsey Village Hall Committee Room. The first ten minutes will be set aside to deal with any issues raised by residents. Full minutes and other information is published each month on our village website.

www.bardseyvillage.org.uk

BARDSEY VILLAGE HALL AGM

Wednesday 24 April 2024

All Bardsey residents are invited to the Village Hall Management Committee (VHMC) AGM, which will be held in Bardsey Village Hall starting at 7.00pm.

THE ANNUAL PARISH MEETING (APM)

This will commence at 7.30pm immediately following the VHMC AGM. All Bardsey residents are most cordially invited to attend the APM of the Parish Council, to receive an update on the work undertaken by the Council over the year.

Do come along and enjoy a glass of wine with us. The APM will be followed at around 8.00pm by the regular Parish Council meeting, the first ten minutes of which is open to residents who wish to raise any concerns.

The Children's Society

On behalf of The Children's Society, we would like to say a huge thank you to all our box holders, for their generous contributions during 2023.



Having counted all your spare change (and notes, as many people don't have change these days!) you will be pleased to hear that Bardsey raised £960 and East Keswick £780! In addition, £160 was donated at our Christingle services at All Hallows and St Mary Magdalene. So thank you to those who came along, baked or bought a cake.

Also a big thank you to Susan Priestley, whose homemade marmalade went down a treat and raised another £238.

In all, that meant Carol and I were able to forward well over £2,000 to this worthwhile charity, which supports vulnerable young people in a range of ways - from children in care, or who go missing, to those with drug issues and mental health problems.

An army of frontline services and volunteers work to tackle child poverty and neglect and none of this could happen without your generous contributions. Thank you, once again!

After eight years of being the representative and doing such great work for this charity, on behalf of St Mary Magdalene and East Keswick, Carol Peace is stepping down and Susan and John Priestley will be taking over her role.

As always, we would be delighted to supply and welcome new box holders, so please don't hesitate to contact one of us on the numbers below.

Helen Render (Bardsey, All Hallows)
07969 059982

Susan & John Priestley (East Keswick, St Mary Magdalene)
01937 572227

Eco Chat: Green Transport

Back to our green energy conundrum...

Go back a few hundred years and our village lanes would have echoed to nothing more than the sound of horses hooves and the wheels they pulled, but the arrival of mechanical forms of transport soon changed that. Firstly came steam power, then the internal combustion engine and most recently jet propulsion.

Our modern world has been forged on our ability to transport people and goods, quickly and efficiently across large distances. Unfortunately all these modern forms of transport rely on burning fossil fuels to produce the energy they need, and as their use has increased so have the carbon emissions they produce.

Today transport is estimated to account for one quarter of all carbon emissions globally.

By far the biggest overall contribution comes from road transport, primarily cars, simply because of the number there are on the road. Air travel, particularly

from short haul flights, also now makes a significant impact on global emission levels.

As you might expect walking or cycling are the lowest carbon way to travel but are not always practical or possible. If not then public transport is usually the best option. Trains are particularly low-carbon ways to travel. Taking a train instead of a car for medium-length distances would cut your emissions by around 80% and using a train instead of a domestic flight would reduce your emissions by around 86%.

Driving an electric vehicle (EV) is currently the best mode of private transport particularly where the electricity supply comes from a low-carbon source. There are however limitations currently imposed by their cost, access to charging points and 'range anxiety'.

As with the energy we use at home the solution is to reduce the amount of travelling we do and then be more thoughtful about the forms of transport we choose when we do travel.

We encourage those who come to church to walk or cycle where they can or share a car, and we can help with that.

The horses hooves may still be there but now drowned out by the noise of modern alternatives.



Green Event Calendar

Knowing what to do about climate change is not always easy, and even when you do know taking the required action can be difficult. Changing to a more sustainable way of living and caring more for the natural world doesn't always come easy in our modern day world, but there are a many local, national and international events and activities that might help you to focus and act on the things you can do.

As a parish we are keen to help our village communities make the changes needed to address the climate crisis and we will therefore be raising awareness of and where possible getting involved with one eco related activity/event each month. The calendar below shows you what they are.

Further details will be made available on our website and via social media, together with dates for those still to be confirmed.

www.bardseyekparish.com/notices

Other special days, weeks and events that draw attention to environmental issues throughout the year are also shown below.

APRIL Stop Food Waste Day (24 th)	MAY Walk To School Week (20-24 th)	JUNE Planting Event with Bardsey Gardeners	JULY Family Litter Pick
AUGUST Climate Sunday (19th)	SEPTEMBER Visit to 'Organic Pantry'	OCTOBER Autumn Planting Day	NOVEMBER Birdfeeders Competition
DECEMBER Christmas Green Crafts	JANUARY '25 Big Garden Birdwatch	FEBRUARY '25 Second Hand/ No-buy Month	MARCH '25 More to come...

Earth Day, 22 April
 International Biodiversity Day, 22 May
 World Environment Day, 5 June
 Beautiful Burial Grounds Week, 8-16 June
 Fairtrade Fortnight, 9-22 September
 World Car Free Day, 22 September

East Keswick Methodist Church



SERVICES

All services are at 10.30am unless otherwise stated.

We welcome all and everyone to our services, and to join us for tea or coffee after the service.

7 APRIL - 10.15

United service at Tadcaster

14 APRIL

Keith Hartrick

21 APRIL - 10.15

Café Church with Andrew Marshall

28 APRIL

Communion with S. Jakeman

5 MAY

Nick Payling

12 MAY - 10.15

Café Church with Eileen Clarkson

19 MAY

Linda Smith

26 MAY

Chapel Anniversary with Rev. Cheeseman

I am glad to tell you that as from Easter Sunday we will be holding our worship in the church. Hopefully by then it won't take too much energy to heat.

East Keswick Methodist Church
Main Street, East Keswick, LS17 9EJ
T: 01937 573434

Free Wi-Fi now available

Church Steward: Penny Harrison

IN THE GARDEN

In our garden spring has sprung...

*Daffodils all around,
And primroses abound.
Come and visit our garden of peace
Birds are singing, and never cease.*

*A welcome awaits and if you are still,
Surprises appear-you can take your fill
Of insects and bugs just coming alive
And watch - there's a bunny just by the
hive.*

SOUPER THURSDAY

Please join us for homemade soups and puddings on **Thursday 25 April** and **Thursday 30 May**, at noon (prompt) in EKMC hall.





**EAST KESWICK
METHODIST CHURCH**

**LAST THURSDAY OF THE MONTH !
12 NOON 'TIL 1PM**

SOUPER ! THURSDAY


**HOMEMADE SOUPS
AND DESSERTS !**

**PAY
AS YOU
FEEL**

CONTACT PENNY: 01937 573434

East Keswick Flower Club

Sarah Spencer



A new demonstrator, Kay Ford, entertained the members and guests on 15 February and it was a good way to start the year's activities off, with 'A Brush with Colour', looking at various artists work over the years! She made eight smaller designs in total, having taken into consideration the fact that a lot of members might have had difficulty in taking a very large arrangement home! Well done for only a third time demonstrating Kay.

This was followed by a workshop in March – 'Madhatter's Tea Party' - when Dawn Meakin instructed us in designs based on a cup and saucer, or using a cake stand. About 32 people took part and she entered into the spirit of the tea party by dressing up!

East Keswick WI Update

Elizabeth Ward



In January Barbara Rogers gave a fascinating account of her granny Florence's early life, as part of the family musical ensemble. With her parents and two sisters, she toured America and also took part in King Edward VII's coronation parties for the poor in London.

March saw us at the seaside with Lesley Newnham. Knitted bathing costumes, suggestive postcards, candyfloss and donkey rides, bringing back memories of our seaside holidays.

On **16 May**, national demonstrator, Vanessa Wellock is "**Bringing Colour to Grey**", and you would be very welcome to come along.

The meetings start at 1.30pm on the third Thursday of the month in East Keswick Village Hall.

If you are interested and would like to join us for a free event as a taster, please contact Janita on **01937 573923** for more details.

NB. For members there is a speaker in April, for your diary, doing a PowerPoint presentation of "Flowers on Show"!

We held a most successful Coffee Morning, raising in excess of £500.

FUTURE EVENTS

9 April

"Florence Nightingale and the LGI" by Stephanie Davies. Competition: 3 Daffodils

14 May

"Famous for 12 minutes" by Malcolm Johnson. Competition: My Famous Moment

Meetings are held at East Keswick Village Hall at 2pm on the second Tuesday of the month. Visitors are always welcome to join us for a cup of tea and a chat, we look forward to seeing you.

East Keswick Parish Council Report

Cllr. Becky Bailey

Updates for January and February 2024

Memorial benches: The jubilee and coronation benches have now been successfully installed at the war memorial.

June Gallant memorial bench: Commemorating June's life and service to the village this has been successfully installed on Main Street near the entrance to the marsh.

Neighbourhood Plan (NP) update: Cllr. Ballmann confirmed that he had now finalised the NP. It was discussed and noted to work back from the election and submit to LCC for approval. Cllr. Waterfield agreed to find the contact at LCC to progress this and also to contact Melanie and Jan to request the presentation boards used at the village presentation.

Memorial planter & memorial plaque: Cllr. Groves confirmed the planter has been constructed opposite the Duke pub and confirmed the second planter has not yet been completed, as the tree needs to be planted before the end of March. Cllr. Edwards noted that residents of Brooklands would like to keep spring bulbs and allow daffodils to grow in the planter. It was agreed to wait for the completion of the second planter before arranging the memorial plaques. Cllr. Bailey confirmed David of East Keswick Plant Centre will plant

the tree ready in the next month.

East Keswick Sports Association update: Due to the heavy rain there is no access to the sports field at the moment. Damage caused to the cricket square is scheduled for repair. Meetings with the Superkings went well, and they are still keen to get a number of teams to participate. Cllr. Groves confirmed a legal agreement needs finalising with Leeds Superkings and he will liaise with Cllr. Ballman to prepare this. In relation to funding, Cllr. Groves noted that the department for levelling up, housing and communities has a programme of match funding and revenue funding. Cllr. Groves will apply/express interest once they are open for applications, and prepare a business plan.

Verge creep: This is ongoing

Playground equipment replacement and grant funding update: MICE funding of £1,483.82 has been received. It was agreed to go ahead with the quote and noted that the roundabout and climbing frame improvements should be completed by Easter.

D-Day 80 - 6 June 2024 working party update: Councillors are looking at the possibility of organising a commemorative event, perhaps a bonfire and refreshments at the sports ground. **If you are interested in being involved, please contact the Parish Council (clerk@ekpc.org.uk)**

PC meetings are held on the third Tuesday of every month at 7:30pm in the Verity Room of the village hall. The next meetings are on **16 April, 21 May and 18 June**. The first ten minutes of all council meetings are set aside for residents to bring any concerns and/or comments to the Cllrs.

East Keswick Wildlife Trust

Elaine Woolley



BARDSEY FIELDS UPDATE

You may be wondering how we are progressing with proposals for the management of Bardsey Fields and why there is no access at the moment. The Trustees have identified a small bridge over the beck which needs repair work, and there are some large, deep, hidden ditches that need making safe first.

We have been busy behind the scenes and are pleased that our application for Countryside Stewardship has been accepted. This means that we will receive a grant towards work on the site, such as hedge planting, gates and fencing. Meanwhile the ecological survey work is progressing and will enable us to make well informed management decisions that will protect and improve the habitat diversity of the site.



Alice with Prof Simon Bottrell and EKWT Trustees Melanie and Elaine

Eve, a student studying ‘Sustainability and Environmental Management’ at the University of Leeds, has nearly completed her research project. She has carried out a survey and spoken to many residents and interested parties to understand what people are hoping to see in the future for Bardsey Fields. Residents have also been consulted at a number of local events. This information will be carefully considered and guided by the Trust’s constitution which puts nature conservation and education high on the agenda.

Alice, another University of Leeds student, studying for an undergraduate degree in ‘Environmental Sciences’, has nearly completed the survey of the soils and hydrology of the fields as part of her dissertation project. As well as providing information to help manage the site, it will also inform us about the potential for natural flood management.

FORTHCOMING EVENTS

Bluebell Walk Wednesday 1 May

Come and enjoy the beautiful bluebells in Ox Close Wood. Meet at Crabtree Lane car park at 7pm, all welcome.

East Keswick Wildlife Trust AGM Tuesday 14 May 7.30pm East Keswick Village Hall

Alice and Eve will present their findings followed by a presentation of EKWT proposals for the Bardsey Fields.



The Illingworth Field Consultation

Do you have any suggestions that may benefit wildlife, environment and our local community?
Follow the link (or QR code) to find out more and have your say - www.eastkeswickvillagehall.org



East Keswick Village Hall Trustees would like to acknowledge the help and support provided in this consultation process by colleagues from East Keswick Wildlife Trust

Bardsey cum Rigton WI Update



Carol Cocker

On 13 March, author and writer, Olivia Rytwinski told us about her journey into the role of an author and story teller. She shared tips on how she plans and draws together the various elements of a successful novel which in her case focus on the subject of psychological thrillers.

We are now looking forward to the annual meeting of the West Yorkshire Federation of the WI on **Tuesday 16 April**. The venue is the King's Hall in Ilkley and it will no doubt be full to capacity, to hear the year's progress. There are two guest speakers. Dr Ryad Alsous (BS, MA, PhD) is a renowned expert on beekeeping and the figure on whom 'The Beekeeper of Aleppo' was based. Equally inspiring will be Jane Robinson, author of 'Hearts and Minds' – the story of the Great Pilgrimage (a march by suffragists in 1913) and how women won the vote.

In an exciting change of direction, the national WI has launched its new 'Learning Hub', giving all members access to a wide

range of educational courses, in a variety of formats. Access will be mainly free of charge, with a mix of live and pre-recorded content, to cater for busy lives and circumstances. This represents a huge step forward in widening access to learning for women - one of the primary aims of the WI.

On **Tuesday 23 April**, we will join our Golden Plover group colleagues for an evening with 'The Crossley Duo' in Bardsey Village Hall. Tickets are now available from Brenda Sanderson. Some of us had a taster from this highly talented musical pair at our visit to Harden last summer.

Our speaker on **8 May** will be Emma Starr who will give us 'a little of what you fancy', and we will be gearing up for our customary coffee morning alongside Bardsey Gardeners at their plant sale on **Saturday 11 May**.

Do come to our next meeting on **10 April** when we will hear about the role of 'support dogs'. The competition is for an item reflecting 'a dog's life'.

We meet in Bardsey Village Hall on the second Wednesday of the month at 7.30pm. Our meetings always allow time for refreshments and an informal chat – an ideal way to meet friends if you are new to the village. Visitors are always warmly welcomed.



METHODIST CHURCH MAIN STREET - EAST KESWICK



MEETING ROOMS FOR HIRE

Seating for up to 80 people • Fast broadband • Large screen TV with full connectivity • Well-equipped kitchen • Modern cloakroom facilities • Secure garden with two patio areas and outdoor furniture

For bookings and current rates contact Donah:

01937 574603 / 07914 043836

For further details visit our website: www.ekmc.org.uk

NEEDLE AND THREAD GROUP

Third Monday of the month in East Keswick Village Hall from 1.00 - 4.00pm.

All types of needlework. Come and join us to learn or share skills and socialise. For further information please contact Heather on

07747 145422

BARDSEY VILLAGE HALL

BOOKINGS - ROSIE STENTIFORD

01937 572652

Main Hall • Stage • Kitchen • Carpark
AVAILABLE FOR HIRE

VOLUNTARY TRANSPORT GROUP

Please get in touch if you need transport to the hospital, the doctors, the dentist or prescription collection, shopping or a hairdressing appointment. We also have wheelchairs for loan.

In Bardsey Call:

Pauline Hills on 573083 / 07535 692366
Lynn or Brian Tungate on
574679 / 07921 777790

In East Keswick Call:

Susan Priestley on 572227 or Gaynor Anning on 572890

Services Directory



**East Keswick resident roofer
with over 25 years experience.**

All aspects of roofing covered - specialising
in lead work and heritage buildings.

Contact Neil on 07956 500669



BARDSEY

TREE SERVICES LTD

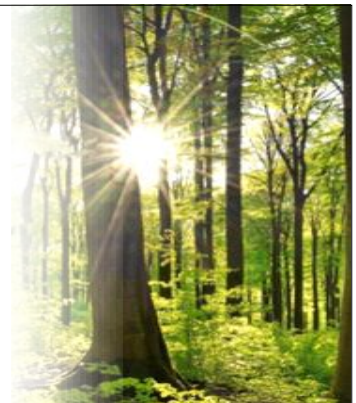
TREE SURGEONS & ARBORICULTURAL CONTRACTORS

ALL ASPECTS OF TREE SURGERY & FELLING • HEDGE CUTTING/REMOVAL • STUMP GRINDING • SITE CLEARANCE FOR RESIDENTIAL & CONSTRUCTION INDUSTRY • WOODCHIP SUPPLIERS • TPO/CONSERVATION AREA CHECKS & FREE APPLICATIONS • TREE SURVEYS & REPORTS / FREE ESTIMATES • EMERGENCY CALL OUT • £10 MILLION PUBLIC LIABILITY INSURANCE

01937 573689

www.bardseytrees.co.uk

info@bardseytrees.co.uk





Bardsey Sports Club

CRICKET – FOOTBALL – RUNNING - YOGA

- Licensed bar
- Free off-road parking
- Function room and grounds available for hire

For more information contact Jo at:
bardseysportsclub@gmail.com
07807 217663

EVERYONE IS WELCOME

BARDSEY ARTS

OFFERING TUITION IN

- * Painting & Drawing
- * Felt Making
- * Silver Jewellery Making
- * Bas Relief Botanical Tiles

Details from Ailsa Read

01937 572709
07831 326309

Bardsey Nursery

For pre-schoolers aged 2-5 all year round, 07.30 - 18.00.

We also offer wraparound care and holiday clubs for school children.

Our bright airy space and wonderful leafy grounds are just perfect for exploring. Come and say hello!

Bardsey Primary School

01937 573999

bardsey@childrenscornerchildcare.co.uk



CALLISTER HALL

WOODACRE LANE, BARDSEY

For private functions and meetings

Well-equipped kitchen available.

For bookings and current hire rates please contact the Parish Office.

01937 574273

bardseyparishchur@btinternet.com





EAST KESWICK VILLAGE HALL

The perfect venue for all occasions with spacious function rooms, ample parking and disabled access.

- Main Hall for your function
- Stunning garden with countryside views
- Medium Room on the side
- Stage & Terrace
- Kitchen & Bar



EAST KESWICK
VILLAGE HALL

To visit or contact us please visit: www.eastkeswickvillagehall.org



MODERN CLASSICS

DEVELOPING EXCLUSIVE NEW BUILD AND CONVERSION HOMES IN THE BEST LOCATIONS

To discuss how we can unlock the value of land or buildings that you may wish to sell or for details of forthcoming developments please contact our award winning team.

0113 268 3416

info@parklanehomes.co.uk
www.parklanehomes.co.uk

SCAN FOR



WEBSITE

Buywell interiors

Fitted Kitchens, Bedrooms and Home Office Solutions



BUY LOCAL - BUY BRITISH - BUY WELL

UNIT 155, AVENUE B,
THORP ARCH ESTATE, LS23 7BJ

Tel: 01937 844288
www.buywellinteriors.co.uk



DO YOU KNOW HOW MUCH YOUR PROPERTY IS WORTH?





For a **FREE** instant valuation
simply scan this QR code

or visit
www.furnellresidential.co.uk

furnellresidential

Your home, our business

t: 01937 574685  

The Hayloft, Cornmill Lane, Bardsey, Leeds LS17 9EQ

NEED HELP WITH A COMPUTER / SMARTPHONE /TABLET / TV?

I come to you ▪ Windows setup & support ▪ email help ▪ PC tune up ▪ one-to-one tuition ▪ PC/laptop ▪ data backup & transfer ▪ smartphone/tablet/printer/broadband/wi-fi support

Thinking of buying a new computer/smartphone/tablet/printer/TV?

Speak to me first for advice on buying the right item at the right price.

Improve your online security

Have you been hacked/scammed? Forgotten passwords?

Paying too much for broadband/TV/landline/mobile contract?

I may be able to get you a better deal. You could save BIG money £££

Need help with TV setup/retune or getting Netflix, Amazon Prime, Disney+, Paramount+, catchup TV (BBC iPlayer/ITV/C4, etc.)? Setup and learn to use Amazon Echo, Fire Stick, Kindle, WhatsApp, Skype, Zoom and much more besides.

Contact **Lee Goodman** for more information (Est. 2009).

lee_gee66@hotmail.com / 01132 698466 / 07941 281558

THORNER FLOORING SERVICES

All types of floor covering supplied and fitted

CARPETS ▪ RUGS ▪ VINYLs ▪ WOOD

8 St. Peter's Garth, Thorne, Leeds, LS14 3EE

THE MOBILE SHOWROOM WITH 1000'S OF SAMPLES BROUGHT TO YOUR DOOR



01132 892344

07774 171744

craig@thornerflooring.co.uk

www.thornerflooring.co.uk

Find us on 



COUNSELLING - ADRIENNE CREW (MBACP)

Registered member of the British Association
for Counselling & Psychotherapy

Counselling can provide valuable support when there is a crisis.

I can offer help with the following;

**RELATIONSHIPS ▪ COUPLE COUNSELLING ▪ DEPRESSION
BEREAVEMENT ▪ WORK LIFE BALANCE ▪ ANXIETY ▪ ANGER ISSUES
▪ LOW SELF-ESTEEM**

T: 07715 267676 / E: adrienne.e2@gmail.com

www.adriennecrew.co.uk

GREYSTONES - STAITHES

Furnished holiday home to rent in the heart of the old village on the picturesque East Coast.

Sleeps 9 in 5 bedrooms (1 En Suite)

Ideal for long weekends, midweek breaks and family holidays.

01937 574177 / 07850 704344

www.greystones-staithes.co.uk



**HEATING OIL DIRECT TO YOUR HOME
STORAGE TANK SUPPLY AND INSTALLATION
EMERGENCY SERVICE & SATURDAY DELIVERY**

**WWW.TATEOIL.CO.UK
CALL: 08456 43 44 43**

LEEDS ROAD, OTLEY, W. YORKS, LS21 3BB



LOCKFARR LOCKSMITH & CCTV

Norman Farrar

MPL NATIONALLY TRAINED LOCKSMITH
FULLY TRAINED CCTV INSTALLER

07760 111418

norman_farrar@hotmail.com

Find us on Facebook – Lockfarr Locksmith and CCTV

ANTHONY SHORTALL

Your local

PAINTER & DECORATOR

City & Guilds Qualified
Apprentice Trained

No job too small or too large

01133 930960 / 07711 706679



Local Electrician

LS22 Electrical Ltd

(Est. 1982)



- ✓ All aspects of domestic electrical installations
- ✓ New installations, alterations & repairs
- ✓ Telephone & computer cable installations & repairs
- ✓ No job too small!!!
- ✓ Competitive, efficient, tidy & friendly service

For advice or to arrange a visit call Geoff on;

07791 844305

E: service@ls22electrical.co.uk

SAM WATTS

ALL PLUMBING INSTALLATIONS
AND REPAIRS

Free estimates ▪ No call out
charges ▪ No job too small ▪ City &
Guilds certified

07759 060709



Professional
PLUMBING & HEATING

Engineers



Bathrooms ▪ Glazing ▪ Gas Installations

M. MARTIN

(ENG TECH, LCGI, MCIPHE, RP, GAS SAFE REGISTERED)

Established 1981 - Fully Insured

01132 737197 / 07850 971471

www.leedsplumbingandheating.co.uk
enquiries@leedsplumbingandheating.co.uk
707 Shadwell Lane, Shadwell, LS17 8ET

SARAH KAY HOLISTICS

Reflexology ▪ Zone Face Lift ▪ Massage

07940 769352

FHT and AoR registered (Est. 2018)

When home/office admin needs doing...
but it's just not your thing



HELP! is just a 'phone call away

David Bransby
your-p-a-leeds.co.uk
07853 257 662



HYLAND BUILDERS LTD

Building, Roofing and Glazing Contractors

DOMESTIC, INDUSTRIAL AND COMMERCIAL - EXTENSIONS & ALTERATIONS
SPECIALISTS FOR ALL YOUR BUILDING AND MAINTENANCE NEEDS

Established 1974

Flat Roof Specialists ▪ Roof Repairs (strip & recovers) ▪ Replacement Windows & Double Glazing ▪ Drainage ▪ Drives ▪ Garden Walling ▪ Paving (slab or block) ▪ Fencing ▪ Landscape Gardening ▪ Plastering ▪ Pebble Dashing ▪ Pointing ▪ Guttering & Fall-pipes ▪ Painting & Decorating ▪ Security ▪ Services ▪ UPVC, Facias & Cladding

LEEDS CITY COUNCIL APPROVED - GRANT WORK - ALL WORK GUARANTEED

24 HOUR EMERGENCY SERVICES FOR GLAZING, PLUMBING & BLOCKED DRAINS

(The impossible we can do immediately, miracles take a little longer)



FOR ADVICE AND PERSONAL ATTENTION CALL

07710 099596 or 01937 572596 (24hrs)

10 ROSE CROFT, EAST KESWICK, LEEDS, LS17 9HR



**SFR
PLUMBING
& HEATING**

- * New Boiler Installations & Service
- * Cookers & Fires
- * Landlords Gas Safety Certificates
- * Unvented Systems

- * New & Replacement Radiators
- * Power Flushes
- * Shower & Bathroom Suites
- * Tiling
- * Repairs & Maintenance

Contact Stefan

07833 476 252

www.sfrplumbingandheating.co.uk
sfrplumbingandheating@gmail.com





Wood View

SPORTS MASSAGE & HOLISTIC THERAPIES

Relax | Renew | Revive



Sports Massage
Therapeutic Massage
Aromatherapy Massage
Pregnancy Massage
Reflexology



Practicing from Hetchell Court in Bardsey
Weekdays 9am to 9pm and Saturday 9am to 12pm

07590 950083

www.woodviewtherapies.co.uk

3 Hetchell Court, Bardsey, Leeds LS17 9BY



TAKE STEPS TOWARDS BETTER FOOT HEALTH IN 2024



Choose Bardsey Foot Clinic!

Offering a range of chiropody and podiatry treatments designed to optimise your foot health

Our valued patients' feedback:

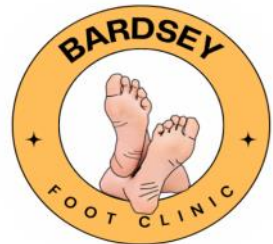
"Rob was very thorough, explained everything very carefully and gave our feet a good MOT." Would highly recommend."

"Rob was efficient, helpful and gave great tips on good foot health. Would recommend too."

Reasons to book:

- HCPC registered Podiatrist
- Friendly, local care, in the comfort of your own home
- Generous appointment slots
- Up to date evidence-based treatments
- Clear and transparent pricing
(£45 new patients, £35 subsequent appointments)
- Specialist in routine podiatry, high-risk and diabetes care

Call or email to book!



Rob Haythorn BSc MRCPod
T: 07565 234044

E: bardseyfootclinic@outlook.com

Rob is an experienced NHS podiatrist and Bardsey resident. Established in 2023, Bardsey Foot Clinic offers high quality foot care on your doorstep



Hair by Kathryn
MOBILE HAIRDRESSER
07767 692052

Gillbeck Associates Ltd
ACCOUNTING / BOOKKEEPING
/ TAX & PAYROLL

A professional service at very
affordable rates - let us save you
money!

01937 585432
enquiries@gillbeck.co.uk

Andrew Morgan
Opticians

Friendly Professional Opticians



NHS & Private Eye
Examinations

Contact Lenses

Wide Range of Frames
for All Budgets

Sight Tests for Adults
and Children

Essilor Zeiss and
Acuvue Lens Specialists

Home Visits Available
for the Housebound

01937 849933

188 High Street, Boston Spa
www.optician.uk.net



The Complete Funeral Service ~ Est. 1808



G.E. HARTLEY & SON LTD.

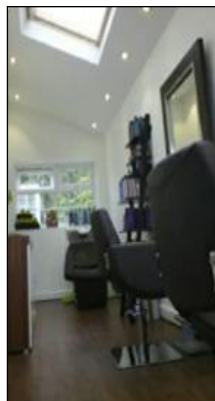
Family Run Business - 24 Hour On-Call Service
Monumental Masonry - Pre-paid Funeral Plans

www.gehartley.co.uk

WETHERBY
66 Westgate
LS22 6NJ
01937 588888

GARFORTH
62a Main Street
LS25 1AA
0113 286 2980

EKOne HAIRDRESSING
BESPOKE COLOURING & RESTYLING



**STATE REGISTERED
MASTER
CRAFTSMAN**

Professional salon
environment, with
off road parking

Call **Elaine** on
01937 572550 /
07762 024229

3 The Grove,
East Keswick



Adrian Wood
Boston Spa
Garage

SERVICING CARS LOCALLY FOR OVER 30 YEARS



Moor End, Boston Spa, Wetherby LS23 6ER
Tel: 01937 844400



Wetherby
Body Shop

BODY SHOP
REPAIRS

All types of Accident
and Repair Work

Unit 10 Erivan Park, Sandbeck Way, Wetherby LS22 7DN
Tel: 01937 580700

Diary Dates

APRIL		MAY	
9	Callister Café, 12.45pm	1	EKWT Bluebell Walk, 7pm
9	EK WI, 2pm	8	Parish Quiz, 8pm
10	Parish Quiz, 8pm	8	Bardsey-cum-Rigton WI, 7.30pm
10	Bardsey-cum-Rigton WI, 7.30pm	11	Bardsey Gardeners Plant Sale, 8.30am
18	EK Flower Club, 1.30pm	14	Callister Café, 12.45pm
18	East Keswick Parish Council, 7.30pm	14	EK WI, 2pm
22	Earth Day	14	EKWT AGM, 7.30pm
24	Bardsey Village Hall AGM, 7pm	16	EK Flower Club, 1.30pm
24	Annual Parish Meeting, 7.30pm	20-24	Walk to School Week
24	Bardsey Parish Council, 8pm	21	East Keswick Parish Council, 7.30pm
24	Stop Food Waste Day	22	International Biodiversity Day
25	EKMC Souper Thursday, 12 noon	22	Bardsey Parish Council, 7pm
26	Fundraiser: Tea & Cakes, 2.30pm	30	EKMC Souper Thursday, 12 noon
27	Fundraiser: Family Forage, 12.30pm		
28	Fundraiser: Evening Concert, 7pm		

The Village News magazine is published bimonthly by the PCC of the Parish of Bardsey with East Keswick. We welcome contributions from our village communities, relating to news, events and topics of interest, for possible inclusion in the magazine, without charge, which would be published at the discretion of the editorial team. Please send entries for inclusion to: bardseypcc@gmail.com

Copy deadline for the June - July 2024 edition is Friday 17 May.

If you missed previous editions you can still find them on the parish website.

The Parish of Bardsey with East Keswick

Incumbent: Revd Angela Hannafin

All Hallows Church

Church Lane, Bardsey, LS17 9DH
Churchwarden: Jacquie Earnshaw
01937 574877

Saint Mary Magdalene Church

Moor Lane, East Keswick, LS17 9ES
Churchwarden: Fiona Siekierkowski
01937 572836

Parish Administrator: Catriona Brent

Parish Office

Callister Hall, Woodacre Lane

Bardsey, Leeds, LS17 9DG

T: 01937 574273

E: bardseyparishchur@btinternet.com

www.bardseyekparish.com

Registered charity Number 1134014

This magazine is printed on fully recyclable paper, by an ISO 14001:2015 certified printer using FSC (Forest Stewardship Council®) paper stock.

