

The Parish of Bardsey with East Keswick

# Village News



FEB – MAR 2023

---

A round up of church news and activities from the villages of Bardsey, East Keswick and the surrounding area

As the **winter cold** continues to bite, the promise of Spring and **new life** are just around the corner...



# Contents

From the Vicarage	3
Parish Church Services	4
From the Register	5
Winter Migrants Return	6
East Keswick WI Report	6
Bardsey cum Rigton WI Update	7
Winter Warmers Community Lunches	8
Bardsey Parish Council Report	9
East Keswick Methodist Church Services and Update	10
Churches Together Thank You and World Day of Prayer	10
Fairtrade Fortnight	11
East Keswick Wildlife Trust	12
East Keswick Flower Club	12
Local Care Partnership	13
Church View Patient Participation Group	14
When God is Silent - Book Review	15
Bardsey & East Keswick Running Club	15
Bowling Club Invitation	16
Bardsey with Collingham Mothers' Union	16
Eco Chat: A Green Spring Clean	17
'Call My Bluff' Wine and Cheese Tasting	18
Bardsey Gardeners	19
Make Your Own Apple Trees: Bench Grafting	19
Diary Dates	20
Village Groups and Facilities	20
Trade and Services Directory	21

# From the Vicarage



Angela Hannafin

Welcome to our February and March edition of the Parish News. A massive thank you to the many wonderful volunteers who deliver this publication to your door and to all our contributors. I want to express a special, huge thank you to Brenda Sanderson, who is stepping back after coordinating the distribution of the magazines for many years in our parish.

We are now changing the way we distribute our magazines and they can now be collected from the Callister Hall rather than the church. All distributors will have received a letter confirming this, with times that the Callister Hall is open.

During these next months, our thoughts turn to what lies beyond winter and look for the first signs of Spring. The natural world plays a big part of the life in our villages and the beauty of our parish continues to draw many to this part of Yorkshire. Through lockdown we were very fortunate to be

sustained by all we see around us. Over the past few years we've all become more tuned in to the importance of looking after our planet. This is something that's at the heart of the Christian faith too. Whilst the book of Genesis was written to communicate truth, via story, to the Jews, the central message of looking after the created world has continued to resonate over centuries. One of the Anglican Church's 'Marks of Mission' is to 'safeguard the integrity of creation, and sustain and renew the life of the earth'.

With the urgency that faces environmental issues, we want to make it a priority this year to encourage our congregations to consider how to live more sustainably. We're thinking hard about our 'eco journey' and what this means for both our worshipping life and for our community life together. It's great that there are so many local groups which share this concern of looking after the environment, and if you have an idea of how we might work together more, then please do let me know.

With every blessing

Angela

# Parish Church Services

DATE	LOCATION	SERVICES
WED 1 FEB	St Mary Magdalene	11.00am Mid-week Communion
SUN 5 FEB	St Mary Magdalene	10.00am Holy Communion
SUN 12 FEB	All Hallows	8.00am Holy Communion 10.00am Family Service
SUN 19 FEB	St Mary Magdalene	10.00am Holy Communion
WED 22 FEB	St Mary Magdalene	7.00pm Ash Wednesday Service
SUN 26 FEB	All Hallows	8.00am Holy Communion 10.00am Morning Worship
WED 1 MAR	St Mary Magdalene	11.00am Mid-week Holy Communion
SUN 5 MAR	St Mary Magdalene	10.00 Holy Communion
SUN 12 MAR	All Hallows	8.00am Holy Communion 10.00am Family Service with Baptism
SUN 19 MAR	All Hallows	8.00am Holy Communion 10.00am Morning Worship
SUN 26 MAR	St Mary Magdalene	10.00am Holy Communion
SUN 2 APR	St Mary Magdalene	10.00am Palm Sunday
MON 3 APR	All Hallows	7.00pm Holy Monday Service
TUE 4 APR	All Hallows	7.00pm Holy Tuesday Service
WED 5 APR	St Mary Magdalene	7.00pm Holy Wednesday Service
THU 6 APR	St Mary Magdalene	7.00pm Maundy Thursday Service
FRI 7 APR	St Mary Magdalene	11.00am Good Friday Reflections
	All Hallows	2.00pm Good Friday Reflections
EASTER SUNDAY 9 APR	Bardsey	6.15am Sunrise Service
	All Hallows	8.00am Holy Communion 10.45am Holy Communion
	St Mary Magdalene	9.15am Holy Communion

After Easter Sunday normal services will resume (8.00am and 10.45am at All Hallows and 9.15am at St Mary Magdalene).

# From the Register

We welcome those who  
have been baptised

**OPHELIA AND HALLIE WILSON**

Sunday 11 December, All Hallows

**FELICITY EDWARDS**

Sunday 11 December, Saint Mary Magdalene

We congratulate those whose  
weddings have taken place

**REBECCA YEOMANS AND NIKOLAOS PANTELIS**

Saturday 17 December, a blessing at All Hallows

We remember those whose  
funerals have taken place

**STEVEN MILLER**

Wednesday 28 December, St Peter's (Thorner)

**DAVID VERITY**

Monday 9 January, Saint Mary Magdalene

# Winter Migrants Return...

During the first week of December we were pleased to welcome back flocks of Redwings and Fieldfares to the trees and hedges in our villages. A significant number were seen feasting on the hawthorn berries at the back of Congreve Way in Bardsey.

Redwings are small thrushes, similar in size to the Song Thrush and they migrate to the UK in winter from their breeding grounds in Scandinavia and Continental Europe. These birds head to the hedgerows and fields to

forage, where they normally feed on berries and worms. When we experience extremely cold spells of weather they often come into our gardens in search of food - apples and other fruit are a popular meal.

Fieldfares are bigger in comparison to Redwings, generally similar in size and shape to the Mistle Thrush. They have a longer tail compared to the Redwing and stand upright and generally move on the ground by hopping about. Like Redwings they are social birds, usually seen in large flocks in farmland, grassland and woodland areas. Fieldfares visit the UK every winter from their breeding grounds in Northern Europe



Redwing



Fieldfare

*Photos taken in Bardsey by Jonathan Marshall ([www.jmarshallwildlife.com](http://www.jmarshallwildlife.com))*

## East Keswick WI Update



Elizabeth Ward

In December we enjoyed a Christmas buffet, plus Buck's Fizz, a quiz, crackers and a present from the "bran tub". A pleasant way to spend a cold wintry afternoon. A donation in lieu of Christmas cards was sent to St. Gemma's.

Bardsey WI invited us to join them for their Christmas Party at Sandmoor Golf Club - thank you for a very good evening.

We started 2023 very well. Our January talk by Alun Pugh, entitled "The History of Roundhay Park", was on very familiar territory for most of us, so we joined in with enthusiasm.

### 14 February

Meeting cancelled.

### 14 March

With holidays in mind Susanne Lifford's talk is entitled "Laos Adventure"

Meetings are held at 2.00pm on Tuesdays at East Keswick Village Hall. Visitors are always welcome and we look forward to seeing you.

# Bardsey cum Rigton WI Update



Brenda Sanderson

Christmas is now a memory and we look towards Spring and already green shoots are coming through the sodden ground.

December saw 46 members from Bardsey and East Keswick WIs in their best bib and tucker enjoying a lovely three course meal at Sandmoor Golf Club, during which the grey matter worked on a couple of quizzes. Auld Lang Syne completed the evening with best wishes to all.

In January 41 members and five visitors enjoyed a very interesting talk about the ladies of Harewood and life in the big house, from Aileen Larsen and Molly Kelly the Butler. We are very fortunate to have this jewel on our doorstep. The competition for something royal was won by Gill Swaby Ward.

## Golden Plover

In December, Scholes WI organised the Carol

Service and this was well attended with a good choice of hymns/carols and readings. Afterwards a chance to meet ladies from other institutes over Christmas cake and mince pies.

## Walk and Lunch

The January date has been postponed and will take place on 21 February, meeting at the Roundhay Fox for a walk at 10.30pm, followed by lunch at 12 noon. Both or either can be participated in.

## 8 February

Member Marjorie Wilson will tell of her life travelling the world in the pursuit of volcanoes and how she achieved great success in a male dominated world. The competition is for a candle. Discussion and choice of the resolution to be voted upon at the National Federation of WIs will also take place.

## 8 March

We will see the return of Malcolm Johnson and we will be captive on the carousel of time in the 70s. The competition is for 70s memorabilia. Malcolm has already covered the 60s and we trust this will be equally interesting.





# Winter

WARMERS

## Community Lunches

Callister Hall, Bardsey

12.45-2.00pm

On the second Tuesday of the month

Join us for a soup and pudding lunch, open to anyone who lives in Bardsey and East Keswick, to engage & connect with local people, and help bring the community together.

Contact the Parish Office if you would like to come along;

**T: 01937 574273**

**E: [Bardseyparishchur@btinternet.com](mailto:Bardseyparishchur@btinternet.com)**

NO CHARGE BUT DONATIONS GRATEFULLY RECEIVED  
(GOING TOWARDS ST AIDAN'S, HAREHILLS, FOODSHARE PROGRAMME)



# Bardsey-cum-Rigton Parish Council Report

Cllr. Linda Flockton

Report from meetings on  
13 December and 18 January.



## FOSTER'S FIELD WILDLIFE RESERVE

The Parish Council are very pleased to have been part of East Keswick Wildlife Trust's (EKWT) purchase of Foster's Field in the centre of Bardsey, thus guaranteeing the long term protection of the site as a wildlife reserve. On behalf of the village we would like to thank EKWT's members for all their efforts to make the purchase a financial possibility.

We are committed to the long-term preservation and improvement of the site working closely with EKWT's trustees. Our aim is to preserve the ecological diversity of the site whilst at the same time facilitating access for the public.

Sited as it is across the road from the school we will be working closely with the school to ensure that the children get maximum benefit from being so close to such an important ecological asset for the area.

It is early days yet but please 'watch this space' to follow progress on how the site will be integrated with the community whilst preserving it's ecological assets.

## NEW COUNCILLOR

The Chairman welcomed our new Councillor, Jeanne Jackson, to our meeting and Jeanne signed the Declaration of Interests. We are now up to full capacity with nine Parish Councillors.

## NEW CLERK AND RESPONSIBLE FINANCIAL OFFICER

Our previous Clerk left our employment at the end of October 2022. We are happy to announce that we now have a new Clerk and Responsible Financial Officer, Victoria Forbes, who began working with us in January 2023.

## HIGHWAYS UPDATE

**A58 - Rigton Bank:** The tarmac surrounding the grate close to Rigton Bank bus shelter is disintegrating and has been reported to LCC Highway Maintenance (Drainage) for urgent action.

**Potholes on Keswick Lane:** The potholes have once again been repaired, however, this is an ongoing problem due to underground springs.

**Blocked Drains - A58:** From the traffic lights to Mill Lane - these blocked drains on both sides of the A58 have been reported to Ali Baz, LCC Operational Supervisor (Gullies).

## BARDSEY STITCHING GROUP

Bardsey Stitching Group are planning to make bunting for the village for the forthcoming celebrations of the Coronation of King Charles III. BPC have agreed to give them a grant towards the cost of the materials.

## FUTURE MEETINGS

The next two meetings will be held on Wednesday 15 February and Wednesday 15 March at 7.00 pm, in Bardsey Village Hall Committee Room.

The first ten minutes will be set aside to deal with any issues raised by residents.

Full minutes and other information is published each month on our village website [www.bardseyvillage.org.uk](http://www.bardseyvillage.org.uk)

# East Keswick Methodist Church

## SERVICES

All services are at 10.30am unless otherwise stated.

### 5 February

Eileen Clarkson

### 12 February, 10.15am

Café Church with Alan Bell

### 19 February

Uell Kennedy

### 26 February

Rev Ann Fox, with Holy Communion

### 5 March

Donald Milne

### 12 March, 10.15am

Steve Jakeman, Café Church & Holy Communion

### 19 March

David Mountain

### 26 March

Alan Bell

## SOUPER THURSDAY

Homemade lunches will be served at 12 noon at EKMC on 23 February and 30 March. Everyone is welcome.

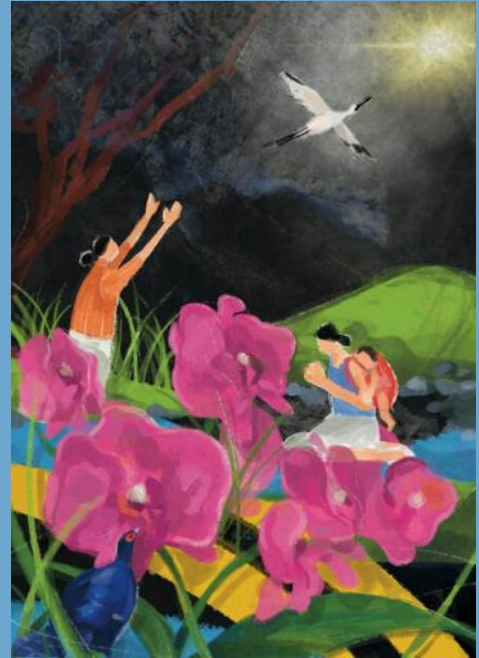
East Keswick Methodist Church  
Main Street, East Keswick, LS17 9EJ  
T: 01937 573434

Free Wi-Fi now available.

**Church Steward: Penny Harrison**

# Churches Together

Thank you to all those who supported and took part in our 'Interactive Christmas Nativity'. We raised £300 for Martin House Hospice.



## World Day of Prayer

Friday 3 March, 2.00pm

We warmly invite you to this year's World Day of Prayer service, at East Keswick Methodist Church. Refreshments will be served.

This year's Day of Prayer has been prepared by the Christian Women of Taiwan. The image above, by artist Hui-Wen HSAIO, uses several motifs that highlight Taiwan's best known features, to express how the Christian faith brings peace and a new vision to Taiwan.

Learn more at [www.wwdp.org.uk](http://www.wwdp.org.uk)

# Fairtrade Fortnight

**27 February - 12 March**

For those of you who don't know, Fairtrade is a global movement, which works to secure a better deal for farmers and workers throughout the poorer parts of the world.

Supporting Fairtrade is a simple way to make a difference to the lives of the people who grow and make the things we love.

Fairtrade's mission is to connect disadvantaged farmers and workers with consumers, promote fairer trading conditions and empower farmers and workers to combat poverty, strengthen their position and take more control over their lives.

You can help Fairtrade achieve their goal by looking for the Fairtrade logo on the goods you buy. Buying Fairtrade is easy

with over 6,000 Fairtrade products from coffee, tea and flowers to chocolates, nuts, oils, sugar, and many more things we buy on a regular basis.

So when you shop, look for the Fairtrade mark. In Wetherby you can find Fairtrade goods in many places including;

M&S

Morrisons  
Since 1899

co  
op



You can also go to the Fairtrade website to find out more about Fairtrade:

**[www.fairtrade.org.uk](http://www.fairtrade.org.uk)**

Or go to their online shop to find more of the things they sell at:

**[www.traidcraftshop.co.uk](http://www.traidcraftshop.co.uk)**

As an eco parish we are supporting this event and we hope you can too! So be a 'Fairtrader' and become part of our parish eco-church family.



# East Keswick Wildlife Trust

Elaine Woolley



## Bardsey Fields Campaign

We are delighted to let you know that our fundraising campaign was a huge success and that we have been able to acquire 'Lot 2' - almost 24 acres of land in the centre of Bardsey village.

The land runs from the front of Bardsey Primary School down to Bardsey beck and beyond. Unfortunately, we only raised sufficient funds to bid on one piece of land and prioritised the lower field for a number of reasons, particularly as it has the best habitat and is very much in the centre of the community.

We sincerely thank everyone who has donated – we couldn't have done it without you!

## East Keswick Flower Club

On Thursday 19 January approx. 45 members and committee sat down for their annual AGM lunch, meeting and talk. The theme of the table setup was pink and white and the eight table arrangements were the lovely raffle prizes. There were some spectacular puddings from some of the members and the lunch was a lively affair with lots of chat. It was a fairly short AGM, which included a speaker talking about NAFAS, the governing body for all flower clubs.

The Trust are still in the process of buying the land and all the donations we have received have gone into the purchase. We are still looking for donations to cover additional costs such as legal fees. For details of how to donate please email us.

**Email: [info@ekwt.org.uk](mailto:info@ekwt.org.uk)**

## Winter Walk

Saturday 11 February

Our annual winter walk is a leisurely walk to Sicklinghall, followed by lunch at the Scotts Arms. Everyone is welcome.

We will be meeting in the Crabtree Lane car park in East Keswick at 10.00am. We do need to book the Scotts Arms, so please email if you are planning to come.

The next meeting will be on **16 February** when Judy Watker will be illustrating '**Hearts and Flowers**' and the meeting on **16 March** will be a talk by Sarah Hopps on '**The Flower Arranger's Garden**'.

Why not come along and join us just before 1.30pm in East Keswick Village Hall. You will be very welcome to stay afterwards and join us for a cuppa and close up of Judy's arrangements, or purchase some of Sarah's plants.

For more information please ring Irmgard on **01937 573387** or Sarah on **01937 919142**.

# Local Care Partnership

Local Care Partnership (LCP) is the term adopted in Leeds to describe the model of joined-up working, across health and care with teams, delivering ‘**local care for local people**’; ‘**working in and with local communities**.’

This model builds on a strong history of joined up working between Leeds City Council, the NHS and the third sector (community organisations).

There are 15 Local Care Partnerships in the Leeds areas covering a population of approximately 30-50,000 people. Each Local Care Partnership has its own unique identity which is shaped by the community, population, geography and local assets within the area.

All LCPs share the same key feature – a range of people working together, regardless of the employing organisation, to deliver joined-up collaborative care that meets the identified population’s needs.

Each partnership includes statutory organisations, third sector (community groups) and elected members, alongside local people, to develop services that support people to access the right support when they need it and to thrive using their individual and community assets.

The Wetherby Local Care Partnership meets regularly online and in person. All are welcome to join the Local Care Partnership in supporting the health and wellbeing of the people of Wetherby and surrounding area.

Bardsey Parish Council is represented on the Wetherby LCP by Mike Bosomworth (**[mikebosomworth@bardseyparishcouncil.gov.uk](mailto:mikebosomworth@bardseyparishcouncil.gov.uk)**).

More information about Local Care Partnerships is available from:

Email: **[lcht.lcpdevelopment@nhs.net](mailto:lcht.lcpdevelopment@nhs.net)**

Website: **[www.leedslcps.org.uk](http://www.leedslcps.org.uk)**

Social Media:

**<https://twitter.com/LcpDevelopment>** or

**<https://linkedin.com/in/lch-local-care-partnerships-development-team-067717238>**

A directory of where help can be obtained with the matters shown below can be found on **[www.leedsdirectory.org](http://www.leedsdirectory.org)** or by telephoning 0113 3784610 or by emailing **[leedsdirectory@leeds.gov.org](mailto:leedsdirectory@leeds.gov.org)**

- Housing
- Maintaining your home and garden
- Keeping active and well
- Information and advice on a range of topics
- Staying independent
- In your community

Examples of help available from member organisations in the network include:

Advice with debt, money, energy or utilities (**[www.leedsmic.org.uk](http://www.leedsmic.org.uk)**).

Help and support for anyone with gambling problems who can be found from GamCare (**[www.gamcare.org.uk/leeds](http://www.gamcare.org.uk/leeds)**) who can also be contacted on 01133 886466 or by email **[leedscommunitygamblingservice@gamcare.org.uk](mailto:leedscommunitygamblingservice@gamcare.org.uk)**.

Help with the cost of living can also be obtained from **[www.leeds.gov.uk/campaign/cost-of-living](http://www.leeds.gov.uk/campaign/cost-of-living)**

# Church View Patient Participation Group (PPG)



Happy New Year from Church View PPG. Following on from our successful restart after Covid we are now in a great

position to move to the next part of our agenda. Up to now all the members of our group have been retired and we meet during the day. We want to expand and have a more balanced and representative membership that reflects the interests of the community throughout our neighbouring villages.

After asking lots of you what you would like to see in a PPG it is clear that those of you who work and may be busy mums and dads would like to be involved, have an influence and a say in what services are developed and included in the Practice's already excellent range. So with that in mind we have started a PPG satellite group.

Exactly the same as the rest of the membership but meeting times are flexible to meet the demands of a busy family. Not just one meeting time but several to cover all of the group – everyone will be included, no one will be left out.

If you are single, a mum or dad, parent or solo and answer yes to any of the following statements, then why not contact us and find out about what we do – you will be surprised:

- Want to escape the soaps and mundane day time TV.
- Would you like do something worthwhile to vary the interest of your time.
- Have an opportunity to meet new and interesting people.
- Like to chat to people or groups on Facebook or Twitter.
- Like to research well-being and let others know about it and where to find it.

It's interesting and worthwhile, as well as enjoyable, and you can do as much as you have time for.

Age is no consideration, the younger you are the more we want to see you. The coffee and chat is on the house, the only one condition is that you must be registered at Church View Surgery. Interested? Then let's hear from you.

**T: 01937 574213**

**E: [ppgcollingam@gmail.com](mailto:ppgcollingam@gmail.com)**



# When God is Silent

Terry Wheeler

Struggling with suffering or the issue of unanswered prayer. It leads us forward to trust and hope.

Whether we pray regularly or infrequently or hardly ever at all, there are times when we wonder if God is listening. This is distressing whatever the nature of our prayers, but perhaps more so when they relate to suffering.

I believe that our prayers are always heard. But if you, like me, sometimes struggle to connect with God in times of confusion or pain then the book '**God on Mute**' may bring comfort and hope.

Written by the Christian author Pete Grieg

with an introduction by Justin Welby, the book takes us on a journey of the three days of Christ's suffering and burial.

**Maundy Thursday: How am I going to get through this?**

**Good Friday: Why aren't my prayers being answered?**

**Holy Saturday: Where is God when heaven is silent?**

The glory of Easter Sunday is celebrated and a 40-day prayer guide follows. Finally, there is a beautiful afterword by the author's wife, Sammy. This is an honest, profound, practical and inspirational book. It is also intensely personal as his wife, Sammy, fights for her life. Stories and quotations are poignant and sometimes funny.

'**God on Mute**' was one of the books recommended by our vicar Angela last year and will resonate with anybody.



## Bardsey & East Keswick Running Club



**BARDSEY & EAST KESWICK  
RUNNING CLUB**  
YOUR PACE OR MINE

Maybe you're looking to improve fitness, maybe you want to try a new hobby or live locally and want to meet new people. Whatever the reason, joining our "running family" has so many perks and so many benefits.

Our members range from Walk Joggers to Marathon Runners and we are welcoming new members all the time.

We meet on;

- Mondays 6.30pm
- Wednesdays 7.30pm
- Fridays 9.20am
- Sundays 10.00am

We choose from several 6km routes around the villages with a mixture of road and trail. Its free and you'll have access to over 400 club runs per year. Plus many opportunities to socialise. For more details contact us on Facebook: **Bardsey & East Keswick Running Club**.

# Bardsey Bowling Club Invitation

The Club will be celebrating the opening of the green for the 2023 season on **18 March**.

Come along and try bowls for free, ladies particularly welcome. Introductory offers available, to include loan of equipment and coaching (the club has two qualified coaches). Individuals, or small groups, are always most welcome to come along for a taster session.

The club has various mixed teams playing in both the Harrogate and Tadcaster leagues. Members are also welcome to play just socially and join in with our various fun/competitive events during the season.

There will be a Coffee Morning from **10.00 - 12.30** in the Village Hall, with free entry and refreshments for all who wish to participate. Bacon butties will be on sale throughout, as will home made preserves, a sales table and raffle. Just a few steps out of the Village Hall takes you to the green, which will be open for those wishing to have a go.

From **1.30pm** the club pavilion and green will be open for those who wish to have a go at bowls and to watch a game or two in progress. Refreshments will be available from the pavilion.

Please join us to celebrate the start of another season of bowling here in the heart of the village.

For further information please contact Andy on **07910 195 227**.

# Bardsey with Collingham Mothers' Union

The December meeting was really interesting and after a short service Elizabeth Otty told of her love of hymns and how they had affected her life. She showed an assortment of hymn books ranging from her first, which was from Sunday School. We learnt how hymns first started to be sung in the mid 18th century, when Methodism was born. A lovely afternoon was had by all.

In January the Diocese 'Wave of Prayer' was held at the home of Judith South and prayers were said for the MUs in Nigeria, Rwanda, Lesotho and the Solomon Islands, with a reminder of their good work carried out.

The monthly meeting was completely different. Revd Angela led a service to admit Elizabeth Otty to the MU which reminded members of the objectives and aims of our worldwide organisation. A tasty warm lunch was then served with an amazing lemon cheesecake to follow. Over coffee and mints conversation was lively and it was agreed that it was an excellent start to 2023.

## **9 February**

We will hold our AGM.

## **9 March**

Lynn Tungate will give a talk entitled '**Just a girl from Crossgates**'.

Visitors are always welcome on the second Thursday of the month at 2.15pm in the Callister Hall.



# Eco Chat: A Green Spring Clean

Elizabeth Otty

Many of you will have started the new year with a list of resolutions, some will be going well and some will probably have already been broken – either way can we, as Eco Churches, ask you to make a new one?

Commit to becoming 'greener' in 2023.

Did you know that the average person in the UK is responsible for nine tonnes of carbon dioxide (CO<sub>2</sub>) emissions per year and we really need to reduce this to two tonnes, if we are to be successful in limiting the extent of climate change. So, like spring-cleaning, can we ask you to start to spring clean your lives, by calculating your family carbon footprint

You can do this at

[www.footprint.wwf.org.uk](http://www.footprint.wwf.org.uk) or for a more comprehensive assessment try [www.carbonfootprint.com/calculator.aspx](http://www.carbonfootprint.com/calculator.aspx)

Then look to see what you can do to reduce your footprint. You may already know about many of the suggestions listed below but may not have got around to it yet, so why not make 2023 the year that you do?

- ♥ When your light bulbs need changing switch to LED and save energy
- ♥ Remember to recycle and always try to repair rather than replace
- ♥ Wash your clothes on 30° C and air dry if possible
- ♥ Don't leave electrical appliances on standby – turn off when not in use
- ♥ When utility contracts are due for renewal switch to a 'green' supplier
- ♥ Buy local and seasonal foods, and avoid products that have been imported into the UK
- ♥ Try to walk, cycle, or use public transport for a regular journey at least once a week
- ♥ Turn down your home thermostat to 18-21°C and only heat the rooms you use
- ♥ When the summer comes – and it will – don't use a hose to water your garden, get a water butt.
- ♥ And think about taking holidays locally to avoid air miles

**There are so many more things you can do. So resolve that 2023 is the year to make the change....**

Let us know how you get on and become part of our parish Eco-church family.

# 'Call My Bluff'

## Cheese & Wine Tasting

East Keswick Village Hall  
Saturday, 11 March 2023, 7.00pm

You are invited to take a table at this wine tasting event, which follows the format of previous successful evenings, with a panel of three tasters describing a wine, or a cheese, one of which will be true and the others a bluff.

The winning table, with the most correct answers will receive bottles of champagne as prizes.

Your table will have a full bottle of each wine to taste and make your selection. There will be three white wines and three red wines to taste. In addition, there will be five interesting cheeses to taste.

Join in the fun and put your palate and taste buds to the test, we will provide light snacks to supplement your tasting experience.

A wide range of other prizes will be available at our raffle table to enhance your evening.

Another fun event, to which you can invite friends to make up a table of eight people.

Reserve your place now and join in the best night of the year by contacting David Wort on **01937 573082** or email at **dauidwort24@gmail.com**

**£160** per table of eight  
or **£20** per person (no price increase)

**Payment due by 31 January**

Pay by cheque, made payable to 'East Keswick Village Hall' or by bank transfer to:

**East Keswick Village Hall**  
**Sort code: 40-46-21**  
**Account no: 81035282**

# Bardsey Gardeners

Hannah Tebbett

Happy New Year from the Committee at Bardsey Gardeners. Although it's a quiet time in our gardens we are busy planning for the year ahead. Many congratulations to East Keswick Wildlife Trust for their success in purchasing Bardsey Fields – what a wonderful legacy for our village. We are in talks with the Trust about the possibility of using a small area of the land they have purchased in the village to create a Community Orchard.

Other projects include helping with the creation of a sensory garden up at the primary school – if you think you could contribute some time, plants, or hard landscaping materials to this project please get in touch.

Our Annual General meeting will be held at 7.00pm on Thursday 2 February in the Callister Hall. We'll be holding a gardeners



question time so please submit your questions in advance via email at **bardsey.gardeners@gmail.com**. We'll also be doing a seed swap and serving wine and cheese.

Next up is an apple tree grafting event on **25 February, at 10am** (see below) in Bardsey Village Hall. In this workshop you will learn how grafting works and have a go at creating your own fruit trees. Tickets are available now and prices at £20 for members of the Bardsey Gardeners and £25 for non-members, children are free. You may select the member price if you intend to join our group on the day. Annual membership is just £5 for individuals and £10 for a household, and gives you reduced prices for our events and access to member-only activities such as our summer open gardens events.

## Make Your Own Apple Trees: Bench Grafting

**25 February, 10.00am**  
**Bardsey Village Hall**

Grafting means you can be sure of the variety of fruit and the size of the tree. In this workshop you will learn how grafting works and have a go at creating your own fruit trees. All participants will get to take away two apple trees they have grafted, with the option of grafting more trees for £5 each.

Attendees will learn how to practice safe knife control and cut both components of a whip and tongue graft. We will also demonstrate the saddle graft and cleft graft techniques.

All equipment and materials will be provided, although you are welcome to bring along some "scion" material - fresh cuttings of last year's growth from a tree that you would like to propagate.

Organised by Fruit Works Co-operative with Bardsey Gardeners. Tickets are on sale now from;

**[www.bardseygrafting.eventbrite.co.uk](http://www.bardseygrafting.eventbrite.co.uk)**  
£20 for members of Bardsey Gardeners and £25 for non-members.

# Diary Dates

FEBRUARY		MARCH	
2	Bardsey Gardeners AGM, 7pm	3	World Day of Prayer Service, 2pm
8	Bardsey-cum-Rigton WI, 7.30pm	8	Bardsey-cum-Rigton WI, 7.30pm
9	Mothers' Union, 2.15pm	9	Mothers' Union, 2.15pm
11	EK Wildlife Trust Winter Walk, 10am	11	Call My Bluff Wine and Cheese Tasting
14	Winter Warmers Lunch, 12.45pm	14	EK WI, 2.00pm
15	Bardsey Parish Council 7pm	14	Winter Warmers Lunch, 12.45pm
16	EK Flower Club, 1.30pm	15	Bardsey Parish Council, 7pm
21	Bardsey WI Walk & Lunch, 10.30am	16	EK Flower Club, 1.30pm
23	EKMC Souper Thursday, 12 noon	18	Bowling Club Coffee Morning, 10am
25	Apple Tree Grafting, 10am	30	EKMC Souper Thursday, 12 noon

## Village Groups and Facilities



### Bardsey Sports Club

CRICKET – FOOTBALL – RUNNING - YOGA

- Members bar
- Secure, free, off-road parking
- Function room and grounds available for hire

For more information contact  
Harwood Williams:

**bardseysportsclub@gmail.com**  
**07932 567520**

NEW MEMBERS ALWAYS WELCOME



The **HALL EAST KESWICK**



The perfect venue for all occasions  
with spacious function rooms,  
ample parking and disabled access

STAGE - BAR - KITCHEN  
TERRACE - EVENTS FIELD

[www.eastkeswickvillagehall.org](http://www.eastkeswickvillagehall.org)

## Bardsey Nursery

For pre-schoolers aged 2-5 all year round, 07.30 - 18.00.

We also offer wraparound care and holiday clubs for school children.

Our bright airy space and wonderful leafy grounds are just perfect for exploring. Come and say hello!

Bardsey Primary School

**01937 573999**

**bardsey@childrenscornerchildcare.co.uk**



## CALLISTER HALL

WOODACRE LANE, BARDSEY

**For private functions and meetings**

Well-equipped kitchen available.

For bookings and current hire rates please contact the Parish Office.

**01937 574273**

**bardseyparishchur@btinternet.com**



## METHODIST CHURCH

MAIN STREET - EAST KESWICK

**MEETING ROOMS FOR HIRE**

Seating for up to 80 people • Fast broadband • Large screen TV with full connectivity • Well-equipped kitchen • Modern cloakroom facilities • Secure garden with two patio areas and outdoor furniture

For bookings and current rates contact Donah:

**01937 574603 / 07914 043836**

For further details visit our website: **www.ekmc.org.uk**



## VOLUNTARY TRANSPORT GROUP

Please get in touch if you need transport to the hospital, the doctors, the dentist or prescription collection, shopping or a hairdressing appointment. We also have wheelchairs for loan.

**In Bardsey Call:**

Pauline Hills on 573083 / 07535 692366  
Lynn or Brian Tungate on  
574679 / 07921 777790

**In East Keswick Call:**

Susan Priestley on 572227 or Gaynor Anning on 572890

## BARDSEY VILLAGE HALL

BOOKINGS - ROSIE STENTIFORD

**01937 572652**

Main Hall • Stage • Kitchen • Carpark  
**AVAILABLE FOR HIRE**

## NEEDLE AND THREAD GROUP

Third Monday of the month in East Keswick Village Hall from 1.00 - 4.00pm.

All types of needlework. Come and join us to learn or share skills and socialise. For further information please contact Heather on

**07747 145422**

# Trade and Services Directory

Andrew Morgan **Opticians**

Anthony Shortall, **Painter & Decorator**

Bardsey **Arts [New]**

Bardsey **Landscape and Garden Services**

Bardsey **Tree Services**

Boston Spa **Garage & Wetherby Repair Shop**

**Counselling** - Adrienne Crew

Dalby **Landscapes**

David Bransby - **Personal Assistant**

EKOne **Hairdressing**

E W Vickerman, **Cabinetmaker & French Polisher**

Furnell **Residential**

Garolla **Roller Shutter Doors**

G. E. Hartley & Son Ltd, **Funeral Directors**

Gillbeck Associates Ltd,  
**Accounting & Bookkeeping**

Graham **Landscapes**

Greystones – Staithes, **Holiday Home Rental**

**Hair** by Kathryn

Hyland **Builders** Ltd

JMA **Landscape Services**

Lockfarr **Locksmith & CCTV**

**Locksmith & Security** Installer

LS22 **Electrical** Ltd

M. Martin **Plumbing & Heating Specialist**

Parker Hartley & Co, **Financial Accountants**

Park Lane **Homes** Ltd

Pauline Hughes **Chiropodist**

Sam Watts **Plumbing**

SFR **Plumbing & Heating**

S. P. Harrison, **Painter & Decorator**

Tate **Fuel Oils**

Thorner **Flooring Services**

Wood View **Sports Massage & Holistic Therapies**

We are currently selling homes in Bardsey and East Keswick quickly. If you are considering moving, now could be a good time to put your home on the market.



For a FREE valuation simply visit [www.furnellresidential.co.uk](http://www.furnellresidential.co.uk) and click the INSTANT VALUATION link



**furnellresidential**  
ESTATE AGENTS & PROPERTY CONSULTANTS  
*Your home, our business*



Hill Barn, Cornmill Lane, Bardsey LS17 9EQ **t:** 01937 574 685  
**e:** [info@furnellresidential.co.uk](mailto:info@furnellresidential.co.uk) **w:** [furnellresidential.co.uk](http://furnellresidential.co.uk)

If you have instructed another agent on a Sole Agent basis, the terms of these instructions must be considered before contacting us.

# THORNER FLOORING SERVICES

ALL TYPES OF FLOOR COVERING SUPPLIED AND FITTED

**CARPETS • RUGS • VINYLs • WOOD**



THE MOBILE SHOWROOM  
1000'S OF SAMPLES BROUGHT  
TO YOUR DOOR



8 St. Peter's Garth  
Thorner, Leeds  
LS14 3EE

**01132 892344**  
**07774 171744**

[craig@thornerflooring.co.uk](mailto:craig@thornerflooring.co.uk)  
[www.thornerflooring.co.uk](http://www.thornerflooring.co.uk)

Find us on 



MODERN CLASSICS

## DEVELOPING EXCLUSIVE NEW BUILD AND CONVERSION HOMES IN THE BEST LOCATIONS

To discuss how we can unlock the value of land or buildings that you may wish to sell or for details of forthcoming developments please contact our award winning team.

**0113 268 3416**

[info@parklanehomes.co.uk](mailto:info@parklanehomes.co.uk)

[www.parklanehomes.co.uk](http://www.parklanehomes.co.uk)

SCAN FOR



WEBSITE

# HYLAND BUILDERS LTD

EST  
1974

Building, Roofing and Glazing Contractors

DOMESTIC, INDUSTRIAL AND COMMERCIAL - EXTENSIONS & ALTERATIONS  
SPECIALISTS FOR ALL YOUR BUILDING AND MAINTENANCE NEEDS

Flat Roof Specialists • Roof Repairs (strip & recovers) • Replacement Windows & Double Glazing • Drainage Drives • Garden Walling • Paving (slab or block) • Fencing • Landscape Gardening • Plastering • Pebble Dashing • Pointing • Guttering & Fall-pipes • Painting & Decorating • Security Services • UPVC, Facias & Cladding

**LEEDS CITY COUNCIL APPROVED - GRANT WORK - ALL WORK GUARANTEED**  
**24 HOUR EMERGENCY SERVICES FOR GLAZING, PLUMBING & BLOCKED DRAINS**  
*(The impossible we can do immediately, miracles take a little longer)*

FOR ADVICE AND PERSONAL ATTENTION CALL

**07710 099596 or 01937 572596 (24hrs)**

10 ROSE CROFT, EAST KESWICK, LEEDS, LS17 9HR





# Improve, Don't Move!

Maximise the value of your home.

- SPACE-SAVING - MAXIMISE YOUR GARAGE HEADROOM
- SECURITY-ENABLED AUTO-LOCKING SYSTEM
- CHOICE OF 21 COLOURS TO MATCH YOUR HOME
- REMOVAL AND RECYCLING OF YOUR OLD DOOR
- DEDICATED AFTER-CARE TEAM

**GAROLLA** 01937 420 034

**ROLLER  
SHUTTER  
DOORS** 

LINES OPEN 7 DAYS A WEEK

[www.garolla.co.uk](http://www.garolla.co.uk)



BESPOKE ELECTRIC DOORS MANUFACTURED IN THE UK

**FREE  
FITTING**  
PAYMENT ON  
INSTALLATION

PRICED  
EXAMPLE **£895**  
COMPACT • UP TO 2.4M

**GAROLLA ★ PREMIUM**  
Increased Security • Double Insulation  
One-Touch Close

PRICED  
EXAMPLE **£1,990**  
PREMIUM • 3.4M • ANTHRACITE



## LOCKFARR LOCKSMITH & CCTV

**Norman Farrar**

MPL NATIONALLY TRAINED LOCKSMITH  
FULLY TRAINED CCTV INSTALLER

**07760 111418**

[norman\\_farrar@hotmail.com](mailto:norman_farrar@hotmail.com)

Find us on Facebook – Lockfarr Locksmith and CCTV



Door & Window Repair • Lock Upgrades

• Garage Locks & More

**07721 876571**

[www.lemonlocksmith.co.uk](http://www.lemonlocksmith.co.uk)

## GREYSTONES - STAITHES

Furnished holiday home to rent in the heart of the old village on the picturesque East Coast.

**Sleeps 9 in 5 bedrooms (1 En Suite)**

Ideal for long weekends, midweek breaks and family holidays.

**01937 574177 / 07850 704344**

[www.greystones-staitthes.co.uk](http://www.greystones-staitthes.co.uk)



**HEATING OIL DIRECT TO YOUR HOME**  
STORAGE TANK SUPPLY AND INSTALLATION  
EMERGENCY SERVICE & SATURDAY DELIVERY

**WWW.TATEOIL.CO.UK**  
**CALL: 08456 43 44 43**

LEEDS ROAD, OTLEY, W. YORKS, LS21 3BB



## COUNSELLING - ADRIENNE CREW (MBACP)

Registered member of the British Association for Counselling & Psychotherapy  
Counselling can provide valuable support when there is a crisis.

I can offer help with the following;

- RELATIONSHIPS ■ COUPLE COUNSELLING ■ DEPRESSION
- BEREAVEMENT ■ WORK LIFE BALANCE ■ ANXIETY ■ ANGER ISSUES
- LOW SELF-ESTEEM

Tel: 07715 267676 Email: [adrienne.e2@gmail.com](mailto:adrienne.e2@gmail.com)

[www.adriennecrew.co.uk](http://www.adriennecrew.co.uk)

## ANTHONY SHORTALL

Your local

### PAINTER & DECORATOR

City & Guilds Qualified  
Apprentice Trained

No job too small or too large

**01133 930960 / 07711 706679**

## SAM WATTS

ALL PLUMBING INSTALLATIONS  
AND REPAIRS

Free estimates ■ No call out  
charges ■ No job too small ■ City &  
Guilds certified

**07759 060709**

## Local Electrician

LS22 Electrical Ltd

(Est. 1982 - Collingham)

- ✓ ALL ASPECTS OF DOMESTIC ELECTRICAL INSTALLATIONS
- ✓ NEW INSTALLATIONS, ALTERATIONS & REPAIRS
- ✓ TELEPHONE & COMPUTER CABLE INSTALLATIONS & REPAIRS
- ✓ NO JOB TOO SMALL!!!
- ✓ COMPETITIVE, EFFICIENT, TIDY & FRIENDLY SERVICE

For advice or to arrange a visit call Geoff on



**07791 844305**

E: [service@ls22electrical.co.uk](mailto:service@ls22electrical.co.uk)



## BARDSEY ARTS

A new art school for beginners  
or experienced artists, in a  
dedicated studio with  
professional tuition.

For further details of classes  
or individual teaching contact:

**07831 326309** or

[ailsaread1@gmail.com](mailto:ailsaread1@gmail.com)



## S.P. Harrison

Painting & Decorating

Quality paperhanging & painting

**01132 813956 / 07961 181848**



## CABINET MAKER / FRENCH POLISHER

Also floor sanding and re-polishing

**Edward W. Vickerman**

**01132 738242**

247 Main Street, Shadwell, Leeds, LS17 8LA



Professional  
PLUMBING & HEATING  
Engineers



Bathrooms ■ Glazing ■ Gas Installations

**M. MARTIN**

(ENG TECH, LCGI, MCPiPE, RP, GAS SAFE REGISTERED)

Established 1981 - Fully Insured

**01132 737197 / 07850 971471**

[www.leedsplumbingandheating.co.uk](http://www.leedsplumbingandheating.co.uk)  
[enquiries@leedsplumbingandheating.co.uk](mailto:enquiries@leedsplumbingandheating.co.uk)  
707 Shadwell Lane, Shadwell, LS17 8ET



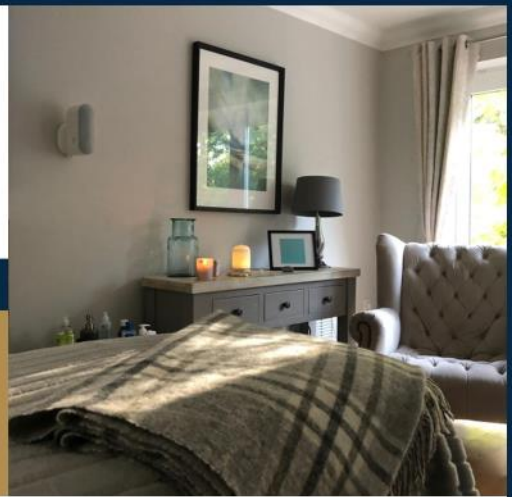
# Wood View

SPORTS MASSAGE & HOLISTIC THERAPIES

Relax | Renew | Revive



Sports Massage  
Therapeutic Massage  
Aromatherapy Massage  
Reflexology



Practicing from Hetchell Court in Bardsey  
Weekdays 9am to 9pm and Saturday 9am to 3pm

**07590 950083**

[www.woodviewtherapies.co.uk](http://www.woodviewtherapies.co.uk)

3 Hetchell Court, Bardsey, Leeds LS17 9BY



*David is the epitome of everything a trustworthy  
efficient & reliable P.A. should be.  
Effective at saving me both time & money.  
A rare find & an invaluable asset to my household.*

*AB - Bardsey*

**HELP! is just a 'phone call away**

**David Bransby**  
**[your-p-a-leeds.co.uk](http://your-p-a-leeds.co.uk)**  
**07853 257 662**

**CHIROPODIST - HOME VISITS**  
PAULINE HUGHES  
MSSCh REG.  
**07745 950528**  
SCARCROFT - LEEDS LS14 3BS

**Hair by Kathryn**  
MOBILE HAIRDRESSER  
**07767 692052**

## Andrew Morgan Opticians

NHS & Private eye examination / Contact lenses / Wide range of spectacle frames / ZEISS, ACUVUE® & Lens specialists

HOME VISITS AVAILABLE

**01937 849933**

170 High Street, Boston Spa

[www.cowenmorganopticiansripon.co.uk](http://www.cowenmorganopticiansripon.co.uk)

## EKOne HAIRDRESSING

BESPOKE COLOURING & RESTYLING



**STATE REGISTERED  
MASTER CRAFTSMAN**

Professional salon environment, with off road parking

Call **Elaine** on

**01937 572550 /  
07762 024229**

3 The Grove,  
East Keswick

## Bardsey Landscape and Garden Services

Grass Maintenance ▪ Patios & Paving ▪ Fencing & Hedging

Call Andy on

**01937 573160**

**07964 180975**

Bardsey based - City & Guilds  
NPTC



**Adrian Wood  
Boston Spa  
Garage**

**SERVICING CARS LOCALLY FOR OVER 30 YEARS**

 Moor End, Boston Spa, Wetherby LS23 6ER  
**Tel: 01937 844400**



**Wetherby  
Body Shop**

**BODY SHOP  
REPAIRS**

**All types of Accident  
and Repair Work**

Unit 10 Erivan Park, Sandbeck Way, Wetherby LS22 7DN  
**Tel: 01937 580700**

## DALBY LANDSCAPES

Landscape gardening, fencing & general garden maintenance ▪ Weekly, fortnightly or one-off garden tidy ▪ All aspects of tree services undertaken

**Nigel Dalby 07752 586566**

**Ben Dalby 07840 442628**

**01937 574583**

[www.dalbylandscapes.co.uk](http://www.dalbylandscapes.co.uk)

## Gillbeck Associates Ltd

**ACCOUNTING / BOOKKEEPING  
/ TAX & PAYROLL**

A professional service at very affordable rates - let us save you money!

**01937 585432**

[enquiries@gillbeck.co.uk](mailto:enquiries@gillbeck.co.uk)



LANDSCAPING SERVICES LTD  
landscape & fencing contractors

Local, reliable and professional services for all aspects of hard and soft landscaping  
For more information and a FREE ESTIMATE call

**01937 579117**

[jmaservicesltd@yahoo.co.uk](mailto:jmaservicesltd@yahoo.co.uk)  
[www.jmalandscaping.co.uk](http://www.jmalandscaping.co.uk)

*Parker Hartley & Co*

**Incorporated Financial Accountants**

Services provided:

- ✓ Advice on setting up your business
- ✓ Annual accounts preparation
- ✓ Bookkeeping and preparation of VAT returns using MTD
- ✓ Payroll and auto enrolment
- ✓ Tax returns

T: 07723 027301

E: [info@parkerhartley.co.uk](mailto:info@parkerhartley.co.uk)  
[www.parkerhartley.co.uk](http://www.parkerhartley.co.uk)



**BARDSEY TREE SERVICES Ltd 01937 573689**

**Tree Surgeons & Arboricultural Contractors**

- All aspects of tree surgery & felling
- Hedge cutting/removal
- Stump grinding
- Site clearance for the Construction Industry
- Suppliers woodchip
- TPO/Conservation area checks
- Tree Surveys & Reports/Free Estimate
- Emergency Call Out
- £10 million Public Liability Insurance

[www.bardseytrees.co.uk](http://www.bardseytrees.co.uk)

Director: Andrew R Ward

[info@bardseytrees.co.uk](mailto:info@bardseytrees.co.uk)

**GRAHAM  
LANDSCAPES**

Drives & Decking • Fencing & Walls •  
Gardens & Gates • Patios, Pergolas &  
Paths • Paving & Power Washing •  
Resin Bound Gravel • Turfing & Tidying



The award winning  
garden builders

**01937 580607 / 07752 093361**

Free advice & estimates • 12 month guarantee • £2 million liability cover



# SFR PLUMBING & HEATING

Contact Stefan

**07833 476 252**

[www.sfrplumbingandheating.co.uk](http://www.sfrplumbingandheating.co.uk)  
[sfrplumbingandheating@gmail.com](mailto:sfrplumbingandheating@gmail.com)

- \* New Boiler Installations & Service
- \* Cookers & Fires
- \* Landlords Gas Safety Certificates
- \* Unvented Systems

- \* New & Replacement Radiators
- \* Power Flushes
- \* Shower & Bathroom Suites
- \* Tiling
- \* Repairs & Maintenance



The Complete Funeral Service - Est. 1808



## G.E. HARTLEY & SON LTD.

Family Run Business - 24 Hour On-Call Service  
Monumental Masonry - Pre-paid Funeral Plans

[www.gehartley.co.uk](http://www.gehartley.co.uk)

WETHERBY  
66 Westgate  
LS22 6NJ  
01937 588888

GARFORTH  
62a Main Street  
LS25 1AA  
0113 286 2980

## Spring

Blows the thaw-wind pleasantly,  
Drips the soaking rain,  
By fits looks down the waking sun:  
Young grass springs on the plain;  
Young leaves clothe early hedgerow trees;  
Seeds, and roots, and stones of fruits,  
Swollen with sap put forth their shoots;  
Curled-headed ferns sprout in the lane;  
Birds sing and pair again.

**Christina Rossetti**



The Village News magazine is published bimonthly by the Parochial Church Council of the Ecclesiastical Parish of Bardsey with East Keswick and distributed free of charge to all households in the Parish. However to help cover the cost of printing and administration a donation of £1 per copy would be appreciated. See our website for different ways to contribute;  
[www.bardseyekparish.com/giving](http://www.bardseyekparish.com/giving)

A digital copy of the magazine can be viewed or downloaded from the parish website and is also available by email on request.

We welcome contributions from our village communities, relating to news,

events and topics of interest, for possible inclusion in the magazine, without charge, which would be published at the discretion of the editorial team.

Please send entries for inclusion to:  
[bardseypcc@gmail.com](mailto:bardseypcc@gmail.com)

**Copy deadline for the Apr - May 23 edition is Monday 20 March, 2023.**

If you missed previous editions you can still find them on the parish website.

Please note, articles in this magazine express the views and opinions of diverse groups. They do not represent a formal policy of the Church.

## **The Parish of Bardsey with East Keswick**

Incumbent: Revd Angela Hannafin

### **All Hallows Church**

Church Lane, Bardsey, LS17 9DH  
Churchwarden: Jacquie Earnshaw  
01937 574877

### **Saint Mary Magdalene Church**

Moor Lane, East Keswick, LS17 9ES  
Churchwarden: Fiona Siekierkowski  
01937 572836

### **Parish Administrator: Catriona Brent**

Parish Office  
Callister Hall, Woodacre Lane  
Bardsey, Leeds, LS17 9DG  
T: 01937 574273  
E: [bardseyparishchur@btinternet.com](mailto:bardseyparishchur@btinternet.com)

[www.bardseyekparish.com](http://www.bardseyekparish.com)

Registered charity Number 1134014

This magazine is printed on fully recyclable paper, by an ISO 14001:2015 certified printer using FSC (Forest Stewardship Council®) paper stock.

