

THE PARISH OF BARDSEY WITH EAST KESWICK

# Village News

---



Dec 25 – Jan 26

A round up of church news and community activities from the villages of Bardsey, East Keswick and the surrounding area.

Merry Christmas, a very Happy New Year and thank you, to all the advertisers, community groups and article contributors who have supported the Village News magazine throughout 2025,

# Contents

Church News	3
From the Register	3
Parish Church Services	4
East Keswick Methodist Church Services and Updates	6
When Christmas Isn't Merry	7
1st Bardsey Scouts Update	8
Cinema Night Update	9
East Keswick WI Report	9
The Children's Society Box Collection	10
Bardsey-cum-Rigton WI Report	11
East Keswick Flower Club	12
Bardsey and East Keswick Running Club	12
East Keswick Local History Group Talk	13
Churches Together 'A Christmas to Believe In' Event	14
Bardsey Tennis Club Quiz Thanks	15
Just Doing My Job	15
Bardsey Gardeners News	16
Café Callister	17
Churches Together Charity Quiz Update	17
East Keswick Village Hall Letter	18
Bardsey Parish Council Report	20
East Keswick Wildlife Trust News	21
Bardsey Beer Festival	22
East Keswick Parish Council Report	23
Village Facilities, Clubs and Community Groups	24
Services Directory	26
Diary Dates	36

# Church News



As we enter Advent, we hope that all is well in the Parish and we look forward to the approaching Festive Season. We also hope that you will be able to join us for some of our special services.

We are still relying on the goodwill of visiting clergy to take services and so may need to change services to those advertised in this edition. So, please do check the website for the latest information on services.

We are still able to have baptisms, weddings and funerals. If you need a visit from a vicar, please contact the parish office or in an emergency contact the Churchwardens.

Best wishes from the Church Management Team (**Jacquie, Fiona & Catriona**)

## Love Came Down

Love came down at  
Christmas,  
Love all lovely, Love Divine;  
Love was born at Christmas,  
Star and angels gave the sign.

Worship we the Godhead,  
Love Incarnate, Love Divine;  
Worship we our Jesus:  
But wherewith for sacred sign?

Love shall be our token,  
Love be yours and love be  
mine,  
Love to God and all men,  
Love for plea and gift and sign

**Christina Rossetti**





# From the **Register**

We congratulate those who  
have been married

**JENNY SMITH AND CHRIS MCKENNA**

Saturday 11 October, All Hallows

We remember those whose  
funerals have taken place

**BERYL WILSON**

Friday 26 September

All Hallows

**ANNE POLLARD**

Tuesday 30 September

All Hallows

**ISOBEL WILSON**

Thursday 9 October

St Mary Magdalene

**MICHAEL WILSON**

Friday 31 October

All Hallows

**EDDIE TINSLEY**

Wednesday 12 November

St Mary Magdalene

# Parish Church Services

As we await the appointment of a new vicar we rely on visiting priests to lead our services, which means on occasion some services may need to be amended. There are a number of services highlighted below which need **to be confirmed [TBC]** nearer the time. Please see [www.bardseyekparish.com/churchservices](http://www.bardseyekparish.com/churchservices) for the most up to date information.

**Please note the change of time for joint holy communion services, starting in January**

DATE	LOCATION	SERVICES
WED 3 DEC	St Mary Magdalene	11.00am Holy Communion
SUN 7 DEC	All Hallows	10.00am Holy Communion
SUN 14 DEC	All Hallows	8.00am Holy Communion
	St Mary Magdalene	4.00pm Carols by Candlelight
SUN 21 DEC	All Hallows	8.00am Holy Communion 10.45 Holy Communion
	St Mary Magdalene	9.15am Holy Communion
WED 24 DEC	All Hallows	3pm Crib Service 11pm Midnight Mass
	St Mary Magdalene	3pm Crib Service
THU 25 DEC	<b>10.30am Family Worship [TBC]</b>	
SUN 28 DEC	<b>No Services</b>	
SUN 4 JAN	St Mary Magdalene	<b>10.30am</b> Joint Holy Communion
WED 7 JAN	St Mary Magdalene	11.00am Holy Communion
SUN 11 JAN	All Hallows	8.00am Holy Communion <b>10.30am</b> Joint Holy Communion
SUN 18 JAN	St Mary Magdalene	<b>10.30am</b> Joint Holy Communion
SUN 25 JAN	10.30am East Keswick Methodist Church Covenant Service	

# East Keswick Methodist Church

## SERVICES

All services are at 10.30am unless otherwise stated. We welcome all and everyone to our services and to join us for tea or coffee after the service.

### 7 DECEMBER

Mr David Laycock

### 14 DECEMBER, 10.15

Café Church & Christingle  
with Rev Ann Fox

### 21 DECEMBER

Service of readings and carols (LA)

### 25 DECEMBER

Wetherby (10.30) and Boston Spa (11.00)

### 28 DECEMBER, 10.15

United service at Tadcaster

### 4 JANUARY '26

Rev Ken Marshall

### 11 JANUARY, 10.15

Helen Shipman

### 18 JANUARY

Covenant service, united with Cs of E

### 25 JANUARY

Rev Abi Alex

East Keswick Methodist Church  
Main Street, East Keswick, LS17 9EJ  
T: 01937 573434

Free Wi-Fi available

Church Steward: Penny Harrison



## CAROLS AROUND THE CRIB

**Thursday 18 December, 6.00pm**

All welcome

## SOUPER THURSDAYS

Please note we won't be serving lunches on Christmas Day but will resume on **Thursday 29 January**. Do come along for a bowl of nourishing soup and friendly fellowship.

## OUR GARDEN

*Our garden is looking quite  
bedraggled*

*The trees are looking bare  
But soon we'll see a new addition;  
The Christmas Crib will be there*

*Come and see the baby Jesus,  
Snuggled cosy and warm  
Follow the star, and watch it glow,  
And by angels and shepherds  
adorned.*

*Happy the Christmas morn will be  
When shepherds come and angels  
sing  
A baby boy is born that day;  
Hail to the newborn King!!*

**Christine Burton**

# When Christmas Isn't Merry

Adrienne Crew

## **Coping with loneliness and loss during the holidays**

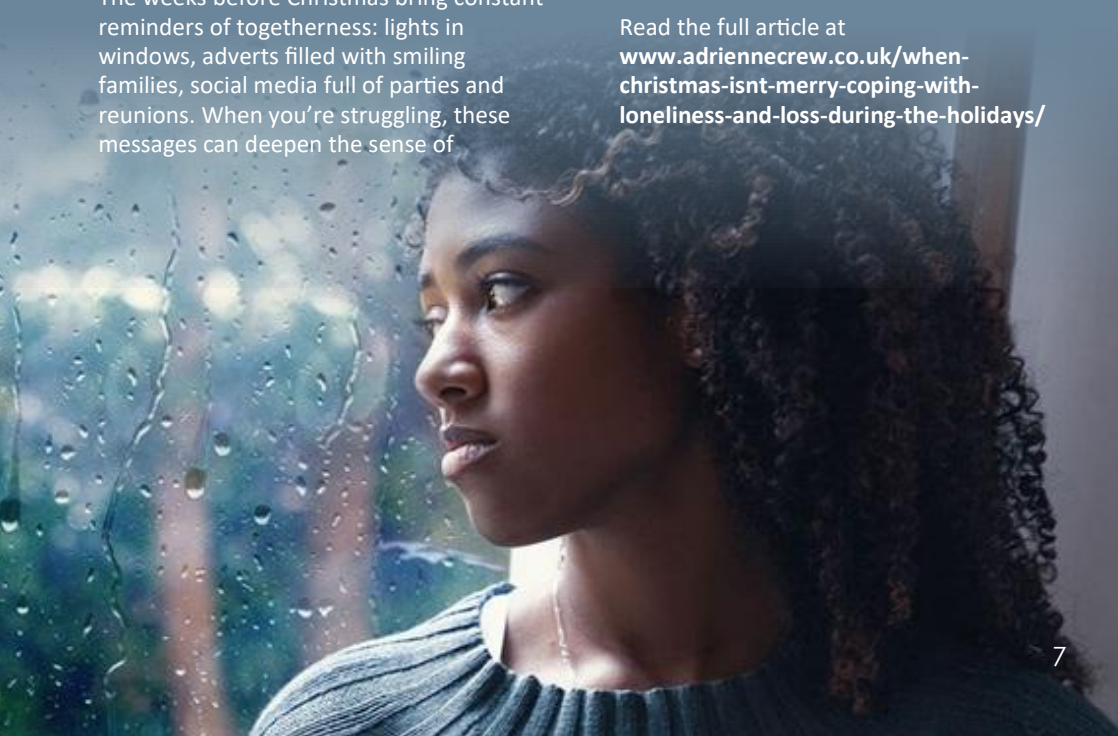
For many people, Christmas brings comfort, warmth and celebration. But for others, it quietly magnifies what — or who — is missing. The season's talk of joy, family and togetherness can be a painful contrast when you're grieving, recovering from a relationship ending, or simply feeling alone. It's important to remember that loss takes many forms. It may be the absence of someone who has died, the end of a relationship, or even a subtle shift in the closeness of a friendship or family bond. Whatever shape it takes, loss can feel especially sharp in December — when expectations of happiness feel impossible to meet.

The weeks before Christmas bring constant reminders of togetherness: lights in windows, adverts filled with smiling families, social media full of parties and reunions. When you're struggling, these messages can deepen the sense of

isolation or highlight what's changed in your life. Grief doesn't follow a calendar. You might feel fine one moment and suddenly find a wave of sadness triggered by a familiar song, a smell, or a memory of a tradition you once shared. The contrast between your inner world and the outside world's cheer can make loneliness feel even more profound. The same can be true after the breakdown of a relationship. A breakup — even one that's right for you — can bring grief for the future you imagined, as well as the routines, companionship and sense of identity that came with it.

Loss is not limited to bereavement. Sometimes it's the ache of missing someone who is still alive — perhaps a partner, friend or family member from whom you've drifted apart. Sometimes it's the hollow feeling that follows the end of a relationship, when the festive season forces you to face old memories or new solitude. Acknowledging this emotional truth is a form of self-kindness. Too often, people dismiss their own pain by saying "others have it worse." But all loss is real, and all loss deserves care.

Read the full article at  
[www.adriennecrew.co.uk/when-christmas-isnt-merry-coping-with-loneliness-and-loss-during-the-holidays/](http://www.adriennecrew.co.uk/when-christmas-isnt-merry-coping-with-loneliness-and-loss-during-the-holidays/)





# 1st Bardsey Scout Group

## Leadership Team

An update of our activities to the village is long overdue. We have been very busy with all three sections, Beavers, Cubs and Scouts, being fully subscribed and a healthy waiting list. Our headquarters has a new roof, external lighting and kitchen, which are a huge improvement and mean we are now watertight!

As a group we attended the annual Wetherby District Camp held at Bramham Park, doing activities such as archery, shooting, axe throwing, cave bus, climbing tower, craft activities, team activities and the ever popular "silent" disco, which is anything but!!

We have had participants at Junior Warrior, which provides a great opportunity to get

very muddy, whilst running round an obstacle course with other scouts from across the county.

More recently all sections attended the Remembrance Day Service at All Hallows Church in Bardsey, where we were made very welcome and refreshments provided. Thank you.

Scouts have a scuba diving taster session planned, and all sections are off on a group camp at a local campsite. Indoors this time, which will be nice, particularly if the weather is not great, as drying our tents at this time of year is a huge challenge for us.

As yet we do not have a Squirrels Section (ages 4-6), so if anyone is interested in talking to us about setting this up, or volunteering in any other capacity with the group please contact our group lead volunteer Mick, on

**mickbee1@hotmail.com**. Any help is welcomed, from cutting grass and general maintenance to volunteering in our section teams.

## Remembrance Day Service at All Hallows





# Cinema Night

Rosie Stentiford

Our next showing is on **30 January**, 7.00pm for a 7.30pm start, at Bardsey Village Hall.

The movie has not yet been chosen but as always, it will have a wide appeal.

Save the date.



## East Keswick WI Update

Elizabeth Ward



In October, Kate from Harrogate, accompanied by her retired guide dog, her current guide dog and a retired 'ambassador' guide

dog, told us of life being partially sighted, and now registered blind. It was inspirational. We were amazed at how much work goes into the training, puppy walkers, etc., and the enormous cost.

November was our Annual Meeting and Pauline Hills continues as President. Margaret Moseley then spoke of "Three Centuries of East Keswick Life in the Newspapers". Especially interesting were details of a notice board advertising WI meetings at Bardsey in the 1930's.

With the Golden Plover Group we heard Christa Ackroyd speak about "Bradford, Broadcasting and the Brontes". The Carol Service will be held at St. Edmund's Church in Roundhay on **Tuesday 9 December, 6.30 for 7.00pm.**

### FUTURE EVENTS

**9 December**

Christmas Party

**13 January**

RNLI

Competition: A seaside photo.

Meetings are held at East Keswick Village Hall on the second Tuesday of each month at 2pm. Visitors are always welcome to join us for a cup of tea and a chat.



# The Children's Society

## January Collection

On behalf of The Children's Society, we would like to say a huge thank you to everyone in the Parish of Bardsey and East Keswick who helped raise over £1,700 this year, whether it was by supporting last year's Christingle service at All Hallows or by being a box holder.

Last year, The children's Society supported more than 72,000 children and young people, and supporters like you made it possible to offer vital therapy sessions, enable young people to develop new skills, give young carers a break from their responsibilities, support families facing hardship and much more.

We will be collecting and counting boxes in January, and as always, we would appreciate the help of all box holders to either return them to us, leave them in church for collection, or get in touch if you want your box collecting. We understand that people don't have as much change to put in their boxes anymore, but every penny counts and you can always top it up with a few pound coins, or a note at the end of the year.

Anyone can become a box holder and it is something which takes no time or effort. Simply keep a small charity box in your home and pop any change you have in it throughout the year; it's amazing how quickly it adds up! Your contributions help raise over £2 million annually to support our most vulnerable children. We would be delighted to supply and welcome new box holders, so please don't hesitate to contact us.

Helen Render on **07969 059982**  
Bardsey Box Co-ordinator

Susan Priestley on **01937 572227**  
East Keswick Box Co-ordinator



# Bardsey cum Rigton WI Update

Carol Cocker



We held our AGM on 12 November, where we welcomed member, Lynn Hilton to our committee, and confirmed that Gill Swaby-Ward will continue as President. Our usual rendition of Jerusalem also marked the sad death of recent member, Hazel Male. We reviewed the past year and looked forward to a varied programme to come in 2026. We finished the evening with a fun seasonal activity – making fabric Christmas baubles. This certainly hit the spot. Everyone was patiently absorbed in producing their own magical bauble for the tree.

We are proud to associate with our neighbouring WIs as the Golden Plover Group and our joint carol service this year is on **Tuesday 9 December** at St Edmund's church, Roundhay, at 7pm. All are welcome for the traditional service and refreshments.

On **10 December**, instead of our normal meeting, we will be celebrating our Christmas party at Sandmoor Golf Club.

Our first meeting in the New Year is on **14 January**, at 7.30pm, when our speaker will be describing the important role of the Food Share project benefiting the parish of St. Aidan's. We hope members will continue to contribute generously to this worthwhile cause. The new year also brings a new shortlist of WI resolutions and we will engage in the national process to identify the key one to be promoted in the following year.

We may have the solution to all those problem backs in February, when "The Spine Guy" will be here to help "get your back sorted". Our competition will be "an interesting spine".

We are a force for good in the community and have an interesting programme of speakers and activities ahead. We meet in Bardsey Village Hall on the second Wednesday of the month at 7.30pm. We always make time for refreshments and an informal chat. Visitors are warmly welcomed. If you are not already a member, why not come and see for yourself at our meeting in January.





# East Keswick Flower Club

Sarah Spencer



Club members and guests met on Thursday 16 October for Janine Gray's demonstration "Fab Fashions and Classics". She is larger than life and bubbly with it, so the afternoon was full of giggles, smiles and fab colours. We all learnt something from her through her tips and advice, that she had gathered over the 40 years of being a florist and a demonstrator. A very good afternoon was had by all and we look forward to welcoming her back to lead in a workshop in November 2026.

This year's workshop, held on 20 November was guided by Christine Hinchcliffe and was for members only.

The Christmas demonstration on Friday 28 November was a sell out and members and guests were entertained by Ian Lloyd. He

returned by popular demand with a new demonstration entitled "Christmas Present". Christmas refreshments were served afterwards.

Even if you are not a member, why not come along and see what we get up to having fun with flowers - who knows you might be inspired to get flower arranging or just come back again to see more wonderful arrangements and interesting chat! The venue is East Keswick Village Hall and all our events start at 1.30 and end with tea or coffee and biscuits.

Have a good winter. The committee join me in wishing seasons greetings to everyone, and a very Happy Christmas. May the New Year be kind to us all.

## Bardsey And East Keswick Running Club

**Couch to 5K starting 7 January 2026**

This will comprise two sessions per week, every Tuesday and Thursday at 6.30pm for eight weeks. Come and shake off the winter blues.

To register your interest, contact us through our Facebook page or on **07508 601294**

Usual running sessions continue on;

Mondays, 6.30pm  
Wednesdays, 7.30pm  
Fridays, 9.20 am  
Sundays, 10.00am



# East Keswick Local History Group

Peter Harding

We have two talks coming up in the next couple of months, in East Keswick Village Hall.

## **Thursday 11 December, 7.30pm 'The Re-discovery of Parlington Hall'**

A detective story by Brian Hull, which looks at the history of the Hall, in Aberford, using some scarce pictures (some from as early as the 1850s) and analyses the mansion's demise.

Parlington Hall and estate were bought by the Gascoignes in 1545, from the Wentworth family of South Yorkshire, near Rotherham. It is fair to state that what the Hall comprised of at that time is lost to history.

This talk establishes how it developed from the early eighteenth century, through to the nineteenth, from the earliest known drawings found to date; The alternatives that were proposed, by famous architects,

but never happened, and then we tour around the gardens of the late nineteenth century using rare photographs to get a glimpse of the hall in its heyday. Finally we witness how it was abandoned and dismantled over decades, until the final section of the main hall was demolished in 1961, leaving only the west wing and stables - parts of which still exist to this day.

## **Thursday 29 January 7.30pm '400 Years of Leeds Through the Collections of Leeds Museums and Galleries' by Patrick Bourne**

Next year Leeds is celebrating the 400th anniversary of its royal charter, granted by King Charles I on 13 July 1626. The year-long celebrations for 'Leeds 400' will feature a variety of events, including exhibitions, community projects, and large-scale performances, focusing on the city's history, culture, and people.

We are fortunate to have Patrick Bourne, Assistant Community Curator of Leeds Museums and Galleries, coming to give us a talk showing how the history of Leeds is told through items in their collections.

All our talks are free for members, £5 for non-members or £10 for annual membership.





**Present**

*A Christmas to Believe In*



**Monday 22 December, 7.00pm**

**East Keswick Village Hall**

(Village Voices from 6.45pm)

**A great family fun event that will  
get you into the spirit of Christmas**

**FREE ENTRY ▪ INTERACTIVE FUN ▪ MINCE PIES & MULLED WINE**

Cash donations on the night will go to

**Baby Basics**

Helping to support families in the Leeds area.



# Bardsey Tennis Club

Linda Flockton



Our fundraising quiz night in September was very successful and well supported, with £926 was raised. The plan is for the money raised to go towards a new clubhouse, and we are currently exploring other funding opportunities, including grants, in order to achieve this aim.

Many thanks to everyone who donated raffle prizes, attended the event and all those who helped on the evening. We hope to make this an annual event in the tennis club calendar.

This is a friendly club catering for all ages and abilities, which runs teams, for adults and juniors in local leagues, as well as playing socially.

Fully qualified coaching is available with weekly junior and adult drop-in coaching sessions for all standards available. For further details contact:

**[bardseytenniscoaching@gmail.com](mailto:bardseytenniscoaching@gmail.com)** or  
visit our website,  
**[www.bardseytennisclub.co.uk](http://www.bardseytennisclub.co.uk)**

## Just Doing My Job

I'm one of Herod's henchmen.  
We don't have much to say.  
We just charge through the audience,  
In a henchman sort of way.

We all wear woolly helmets  
To hide our hair and ears,  
And wellingtons sprayed silver,  
To match our tinfoil spears.

Our swords are made of cardboard,  
So blood will not be spilled,  
If we trip and stab a parent,  
When the hall's completely filled.

We don't look very scary,  
We're mostly small and shy,  
And some of us wear glasses,  
But we give the thing a try.

We whisper henchman noises,  
While Herod hunts for strangers,  
And then we all charge out again,  
Like nervous Power Rangers.

Yet when the play is over  
And Miss is out of breath,  
We'll charge like henchmen  
through the hall  
And scare our mums to death.

**Clare Bevan**



# Bardsey Gardeners

Hannah Tebbett

It's dark already you cry! Yes, clocks have changed and there is no time to nip out into the garden after tea anymore. It's a tricky time of year for many, with cold days and damp starts but there are still fireworks out there if you know where to look; both in the literal sense, at recent bonfire celebrations, and in our gardens. I don't think my Salvia 'Hot Lips' has ever looked better, the dahlias are soldiering on, and the autumn colour has been spectacular.

In September you came out in your droves to take part in our annual show, and it was a huge success, as shown by all the lovely comments we received, the c.£700 raised and the increase in participation across the board. We had 20% more people entering this year and a massive 34% increase in entries, which made 525 beautiful, tasty, and creative things for people to come and admire. Truly a show like ours epitomises the very best of English village life. You should all be very proud. Huge thanks to anyone who judged, stewarded, helped to serve, wash up, set up, tidy up. You are the quiet army that make these things possible. Any feedback you have or ideas for next year are gratefully received.

BG are still working with EKWT to try and install a proper path across Bardsey Fields. We need planning permission for the path, which will run the width of the field from Woodacre Crescent to the far corner, just beyond the school. The path will cost many £000s to install and whilst we are pursuing grant funding it may be necessary to do a bit of crowd funding as well. If you'd like to help make Bardsey Fields accessible year-round please drop us an email.

This month I've been taking it easy on the gardening front, I've put some daffodils in

the lawn, some alliums in the borders and the citrus plants have come indoors for the winter. I've still got garlic to plant at the allotment and I really should try and clear a patch for broad beans. I've also put some seeds I've saved into envelopes to share with others at the AGM, at **7pm on Monday 16 February**, in the Callister Hall. Everyone is welcome and we will serve our usual complimentary wine and cheese.

We had a splendid time on Halloween hosting some children from the village for a craft event and bulb planting session. There are now approximately 150 daffodil bulbs stowed safely in pots ready to delight (we hope) in spring. A little bit of gardening magic to hopefully inspire the next generation.



Our wreath making workshop is in Bardsey Village Hall at **10am on Sunday 7 December**. It includes seasonal refreshments and all your materials for making a beautiful Christmas wreath to adorn your door. It's also a lovely way to meet with friends and get *deeply* into the festive spirit. It's attractively priced, with places just £25 for members and £28 for non-members. Please email us to book a place or enquire about BG membership, which is just £5 for the whole year with benefits which include discounted entry to events, talks and trips, plus access to our summer socials.

**E: [bardsey.gardeners@gmail.com](mailto:bardsey.gardeners@gmail.com)**



## Soup Lunch @ Callister Café

**Tuesday 9 December**  
**Tuesday, 13 January**

12.45 - 2.00pm, Callister Hall, Bardsey

Join us for a soup and pudding lunch.  
Open to anyone who lives locally. No  
charge, but donations to St Aidan's  
Foodshare are welcomed.

Contact the Parish Office for more  
details on **01937 574273**.

## Churches Together Charity Quiz

The charity fundraising quiz held on  
Friday 14 November was once again a  
great success, with over £1,500 being  
raised.

The money will be split equally between  
the **Red Cross Ukraine Appeal** and a  
new local charity called **The Cancer and  
Pisces Trust**, which aims to enhance the  
lives of cancer sufferers through the  
therapeutic pastime of angling.

[www.cancerandpiscestrust.org](http://www.cancerandpiscestrust.org)  
[www.donate.redcross.org.uk/appeal/  
ukraine-crisis-appeal](http://www.donate.redcross.org.uk/appeal/ukraine-crisis-appeal)

Thanks to all who supported the event  
and gave so generously of their money,  
time and enthusiasm.





# East Keswick Village Hall

Dear residents of East Keswick.

A new chapter is unfolding at East Keswick Village Hall, and we warmly invite you to help us begin the next part of its story.

Across the country many public spaces, including village halls, have faced decline, but East Keswick Village Hall stands out as a success story. We have more than sufficient reserves to cover all our liabilities and it remains a cherished, well-cared-for gathering place at the heart of our village, hosting everything from local groups to joyful family celebrations - once visited by HM King Charles III - and supported by dedicated trustees, and a committed maintenance team.

Thanks to generous grants and community donations, we purchased Illingworth Field and breathed new life into it as the Climate Change Garden. We have also embraced the future with a refreshed website and faster broadband, ensuring the community stays connected and accessible.

Looking ahead, we are preparing to launch an ambitious energy and carbon reduction project, investing over £46,000 from grants, donations and reserves. This bold step will boost our energy efficiency, shrink our carbon footprint, strengthen local activities, bring our community closer together, and champion environmental responsibility.

**We are now searching for the next generation of passionate leaders to carry this momentum forward.**

In recent years, the team of trustees has become smaller, as several long-serving members - some with over 30 years of service - have retired, and a few others are planning to step down. We thank all our trustees and volunteers for their commitment to community leadership.

East Keswick has welcomed many new residents who bring fresh energy and pride to our village. The Village Hall is the perfect place to channel this enthusiasm and by becoming a trustee or volunteer, you can play a vital role in supporting and shaping the its future.

An outline of our team structure and a summary of our main income and expenditure are show opposite.

Please email us at **[info@eastkeswickvillagehall.org](mailto:info@eastkeswickvillagehall.org)** for more information about joining the team.

Warm regards, from Peter Guildford (Chairman) and all the East Keswick Village Hall Trustees.



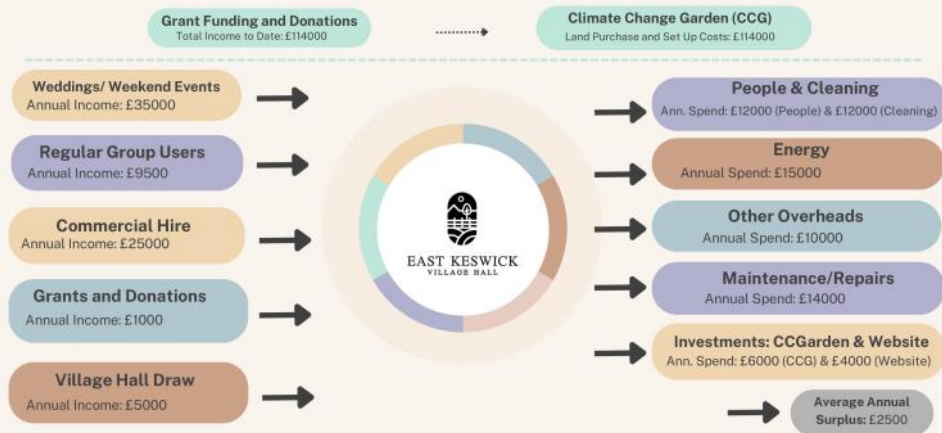
**EAST KESWICK**  
VILLAGE HALL

## SUMMARY OF MAIN INCOME & EXPENDITURE AND TEAM STRUCTURE

### EAST KESWICK VILLAGE HALL

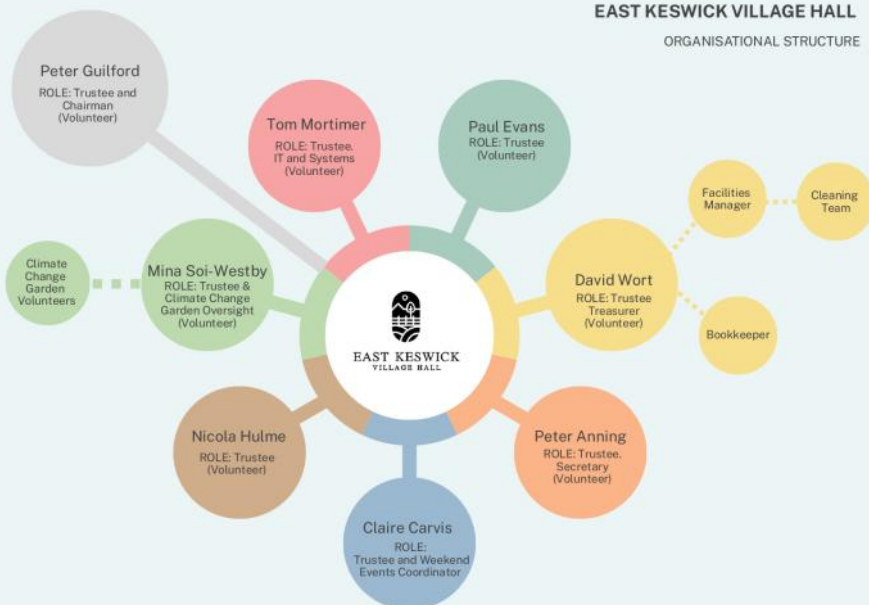
#### MAIN SOURCES OF INCOME AND EXPENDITURE

NOTE: Grants and capital spending on the bio garden are one-off items (not annual or 'from revenue') and are shown separately. All other figures reflect regular cash flow based on a three-year average. For details, visit the EKVH website.



### EAST KESWICK VILLAGE HALL

#### ORGANISATIONAL STRUCTURE



# Bardsey-cum-Rigton Parish Council Report

Cllr. Linda Flockton



## **Keswick Lane crossing from Blacksmiths Field**

We have again contacted LCC and reminded them that we are still awaiting the signage for the Keswick Lane crossing.

## **Proposed zebra crossing on the A58**

BPC and our ward councillors have been vigorously pursuing this, however, we are at present still awaiting an update from LCC.

## **Grit bins**

There are several grit bins, usually close to steep hills, in our parish, for residents to use during icy conditions. These have been checked and most of them are now full.

## **Milestone on the A58 opposite Second Avenue**

This has been deteriorating for some time and we have contacted the Milestone Society for advice. They have suggested that it needs rubbing down and re-painting with metal paint and have offered to help if we are unable to find a local person to

do the work.

## **Flower tubs and village signs**

The flower tubs and village signs have been planted up with winter flowering pansies by Cllr Flockton, Pauline Hills and Andrew Turnbull. Thank you to Pauline, Andrew and everyone who waters and looks after the tubs throughout the year. Also many thanks to Pam Snowden and Sue Jubb for planting up and looking after the tubs on Tithe Barn Lane and near to the duck pond.

## **Clerk and responsible financial officer**

Interviews have taken place for a new Clerk and we are pleased to announce that Rebecca Crabtree has now been appointed. Rebecca brings a wealth of knowledge and IT experience to the role. Her contact details are;

**[clerk@bardseyparishcouncil.gov.uk](mailto:clerk@bardseyparishcouncil.gov.uk)**

May we take this opportunity to wish you all a very Merry Christmas and a prosperous, healthy and peaceful New Year.

The next two meetings will be held at 7pm on **Wednesday 17 December** and **Wednesday 21 January 2026**. The first fifteen minutes will be set aside to deal with any issues raised by residents. Full minutes and other information is published each month on our village website **[www.bardseyparishcouncil.gov.uk](http://www.bardseyparishcouncil.gov.uk)**



# East Keswick Wildlife Trust

Elaine Woolley

## **Mighty oaks from little acorns grow.**

This proverb comes from the epic poem 'Troilus and Criseyde' written by Geoffrey Chaucer in 1374. The oak tree is a symbol of strength and endurance and supports more life than any other native tree species in the UK. They may live for over a 1,000 years and are classed as ancient from 400 years old.

Oak trees are host to hundreds of insect species which in turn are an important food source for many birds, including great tit and blue tit. In the autumn mammals and birds such as wood mice, deer, badgers and jays feed on acorns. The fallen leaves break down to form a rich leaf mould beneath the tree, which supports invertebrates such as the stag beetle and many types of fungi. As the tree bark matures it thickens and eventually loosens and falls. This creates crevices and holes for nesting birds like marsh tits and pied flycatchers. The crevices are also ideal for bat roosts.

Acorns are the fruit of the oak tree. You may have noticed an extra abundance of acorns this year. Every few years oak trees and some other species of trees and shrubs produce a bumper crop of fruit known as a mast year. During a mast year the tree produces more acorns than the birds and mammals can possibly eat. This guarantees that there will be some acorns left on the ground to grow into trees.

This autumn the Wildlife Trust has collected over 200 acorns from one of our reserves. We collected them from 10 different trees to ensure seed diversity. This is important as it encourages resilience to environmental changes and collecting from our own local reserves maintains the cultural heritage. The acorns have been planted in individual sapling pots and when mature, we plan to plant them on our Bardsey Fields reserve.



# **BARDSEY BEER FESTIVAL**

**VENUE - BARDSEY  
SPORTS CLUB**

# **2026**

**CORPORATE SPONSOR DAY**  
**FRI 20TH MAR 2026, 12PM-6PM**  
**GENERAL PUBLIC DAY**  
**SAT 21ST MARCH 2026, 12PM-10PM**



**CORPORATE  
FRIDAY 20TH  
MARCH 2026**

**VENUE**  
**BARDSEY SPORTS CLUB**  
**KESWICK LN, BARDSEY,**  
**LEEDS LS17 9AQ**



# East Keswick Parish Council Report

Ollie Cruse

## New Website

We have upgraded our website in line with new statutory requirements, you can now find us at

**[www.eastkeswickparishcouncil.gov.uk](http://www.eastkeswickparishcouncil.gov.uk)**

and you can contact the Clerk at

**[clerk@eastkeswickparishcouncil.gov.uk](mailto:clerk@eastkeswickparishcouncil.gov.uk)** .

All the useful info has been transferred and will be updated regularly. The existing web and email addresses will redirect but please save and use our new details going forward.

## New Councillor

We are very pleased that Ross Cunliffe has agreed to join the Parish Council. Ross replaces Barry Groves who resigned recently and the Parish Council would like to put on record our thanks to Barry for all his hard work and support, not least on the Sports Association, during his tenure.

## The Duke of Wellington

We are delighted to report that the new tenants at The Duke will be in before Christmas. At the time of writing the new

landlords are planning to re-open for food and drink during the second week in December and will be open on Christmas Day. We are very much looking forward to welcoming them to the village and we wish them every success.

## Hedge Trimming

We kindly ask anyone that has any hedges bordering or foliage covering the pavement (that might have grown wildly after the recent rain) to have them trimmed back to make sure our residents, especially those with mobility issues, can safely walk by.

## Merry Christmas and a Happy New Year

As that time is upon us we would like to wish all our residents and neighbours a very Happy Christmas and all the best for 2026.

If you would like to raise any matters with the Parish Council, please email our Clerk.

The next meetings will be held on **Tuesday 16 December** and **Tuesday 20 January** at 7.30pm in the Verity Room at East Keswick Village Hall. The first fifteen minutes are set aside for questions or comments from residents. Full minutes and local news are published on our village website and further updates can be found on the village Facebook page 'East Keswick Village Group by its Parish Council'





# Consultant Knee Surgeon

**Mr Owen Wall** (FRCS Tr & Orth) is an experienced consultant knee surgeon in the Leeds and Yorkshire areas. He offers private consulting and treatment at both Nuffield Hospital Leeds and Spire Hospital Leeds. With over 15 years consultant experience covering all knee conditions he specialises in treating sports injuries which may result in cartilage and ligament damage, as well as knee arthritis. Specialist treatment covers keyhole surgery for cartilage repair through to partial and total knee replacement.

He has active research interests in stem cell cartilage techniques and cartilage repair.

Mr Wall has a sporting background in endurance sports (running, cycling, triathlon) and understands the needs of active individuals to be able to return to fitness as soon as possible. He is able to offer tailored, bespoke care for the needs and requirements of the individual. If you wish to book a consultation to discuss your knee problems then please make contact with Mr Wall's private secretary, Mrs E. Ingham

**W: [www.leedskneeclinic.com](http://www.leedskneeclinic.com)**

**T: 01133 882009**

**E: [elaine.ingham@nuffieldhealth.com](mailto:elaine.ingham@nuffieldhealth.com)**

## Facilities, Clubs and Community Groups

### **VOLUNTARY TRANSPORT GROUP**

Please get in touch if you need transport to the hospital, the doctors, the dentist or prescription collection, shopping or a hairdressing appointment. We also have wheelchairs for loan.

#### **In Bardsey Call:**

Pauline Hills on 573083 / 07535 692366

#### **In East Keswick Call:**

Susan Priestley on 572227 or Gaynor Anning on 572890

### **CALLISTER HALL**

Woodacre Lane, Bardsey

The hall has capacity for up to 60 people and is ideal for functions, meetings, groups, and children's parties. Well equipped kitchen available.

For bookings and current hire rates please contact the Parish Office.

**01937 574273**

[bardseyparishchurch@gmail.com](mailto:bardseyparishchurch@gmail.com)

### **BARDSEY VILLAGE HALL**

BOOKINGS - ROSIE STENTIFORD

**01937 572652**

Main Hall • Stage • Kitchen • Carpark  
AVAILABLE FOR HIRE

### **NEEDLE AND THREAD GROUP**

Third Monday of the month in East Keswick Village Hall from 1.00 - 4.00pm.

All types of needlework. Come and join us to learn or share skills and socialise.

For further information please contact Heather on

**07747 145422**

This space available for  
your advert

# Bardsey Nursery

For pre-schoolers aged 2-5 all year round, 07.30 - 18.00.

We also offer wraparound care and holiday clubs for school children.

Our bright airy space and wonderful leafy grounds are just perfect for exploring. Come and say hello!

Bardsey Primary School

**01937 573999**

[bardsey@childrenscornerchildcare.co.uk](mailto:bardsey@childrenscornerchildcare.co.uk)



# East Keswick Playgroup

Providing a fun and relaxed environment for parents, carers and pre-school babies and children. Varied activities including play, craft, singing and themes.

Tea, coffee and biscuits provided.

**Every Thursday During  
Term-time, 10.00 - 11.30  
East Keswick Village Hall**

For more information contact Beth  
[kilnerbeth@gmail.com](mailto:kilnerbeth@gmail.com) / 07756 335633

Find us on Instagram  
[@eastkeswickplaygroup](https://www.instagram.com/eastkeswickplaygroup)



## Bardsey Playgroup

Est. 1964

For children aged 2 to 5 years  
9am to 12 noon, Term time  
Callister Hall

**Ofsted Good  
Experienced Staff  
French Spoken Daily**

**Large Indoor and  
Outdoor Space**

**Social Skills  
Numeracy  
Literacy**

**Challenging Daily Activities for Enquiring Minds**

[bardseyplaygroup@gmail.com](mailto:bardseyplaygroup@gmail.com)

[www.bardseyplaygroup.uk](http://www.bardseyplaygroup.uk)



## METHODIST CHURCH

MAIN STREET - EAST KESWICK



### MEETING ROOMS FOR HIRE

Seating for up to 80 people • Fast broadband • Large screen TV with full connectivity • Well-equipped kitchen • Modern cloakroom facilities • Secure garden with two patio areas and outdoor furniture

For bookings and current rates contact Donah:

**01937 574603 / 07914 043836**

For further details visit our website: [www.ekmc.org.uk](http://www.ekmc.org.uk)



## Bardsey Sports Club

CRICKET – FOOTBALL – RUNNING - YOGA

- Licensed bar
- Free off-road parking
- Function room and grounds available for hire

For more information contact Jo at:  
[bardseysportsclub@gmail.com](mailto:bardseysportsclub@gmail.com)

**07807 217663**

**EVERYONE IS WELCOME**

## BARDSEY ARTS

OFFERING TUITION IN  
DRAWING & PAINTING

Details from Ailsa Read

**01937 572709**  
**07831 326309**



Senior fitness  
classes at  
Bardsey Sports  
Club every  
Wednesday from  
10.00-10.45am.

Keep your body and mind in good shape,  
while making new friends. Contact Suzie  
for more information and to book a place  
on **07786 393375**

## Local **Services** and **Businesses**



Professional

**PLUMBING & HEATING**

Engineers

Bathrooms ▪ Glazing ▪ Gas Installations

**M. MARTIN**

ENG TECH, LCGI, MCIPHE, RP,  
GAS SAFE REGISTERED

Established 1981 - Fully Insured

**01132 737197 / 07850 971471**

[www.leedsplumbingandheating.co.uk](http://www.leedsplumbingandheating.co.uk)

[enquiries@leedsplumbingandheating.co.uk](mailto:enquiries@leedsplumbingandheating.co.uk)

707 Shadwell Lane, Shadwell, LS17 8ET



**Homecare  
you can  
trust**



- Personal Care
- Daily Assistance
- Companionship
- Live-in Care
- Respite Care
- Trips Out



**0113 831 5785**

**Call us now**

**726 King Lane, Alwoodley, LS17 7BA**

Excellence in care through the passion of our people





## EAST KESWICK VILLAGE HALL

**The perfect venue for all occasions with spacious function rooms, ample parking and disabled access.**

- Main Hall for your function
- Stunning garden with countryside views
- Medium Room on the side
- Stage & Terrace
- Kitchen & Bar



**EAST KESWICK**  
VILLAGE HALL

To visit or contact us please visit: [www.eastkeswickvillagehall.org](http://www.eastkeswickvillagehall.org)



MODERN CLASSICS

## DEVELOPING EXCLUSIVE NEW BUILD AND CONVERSION HOMES IN THE BEST LOCATIONS

To discuss how we can unlock the value of land or buildings that you may wish to sell or for details of forthcoming developments please contact our award winning team.

**0113 268 3416**

[info@parklanehomes.co.uk](mailto:info@parklanehomes.co.uk)  
[www.parklanehomes.co.uk](http://www.parklanehomes.co.uk)

SCAN FOR WEBSITE





# SMT

JOINERY

07769 324358



**SFR**  
**PLUMBING  
& HEATING**

Contact Stefan

**07833 476 252**

[www.sfrplumbingandheating.co.uk](http://www.sfrplumbingandheating.co.uk)  
[sfrplumbingandheating@gmail.com](mailto:sfrplumbingandheating@gmail.com)

- \* New Boiler Installations & Service
- \* Cookers & Fires
- \* Landlords Gas Safety Certificates
- \* Unvented Systems

- \* New & Replacement Radiators
- \* Power Flushes
- \* Shower & Bathroom Suites
- \* Tiling
- \* Repairs & Maintenance



**Vaillant**



**THE BINGLEY ARMS**  
**ENGLAND'S OLDEST INN 953AD**  
**SERVING REAL ALES & HOME COOKED MEALS**



**LIVE SPORT – QUIZ NIGHT – BEER GARDEN**

[info@bingleyarms.com](mailto:info@bingleyarms.com) - [www.bingleyarms.com](http://www.bingleyarms.com)

37 Church Lane, Bardsey, LS17 9DR, 01937 572462

*'Follow our socials to keep up to date with events & special offers'*



THE BINGLEY ARMS 953AD



@BINGLEYARMS



@THEBINGLEYARMS



***Your Trusted Local Roofer Neil Halliday***

**All Aspects Of Roofing Covered**

**Domestic & Commercial | Over 25 Years Experience**

- Re-Roofs • Repairs • Flat Roofs • Velux Windows
- Chimneys • Lead Work • Guttering • Fascias & Soffits

**Call 07956 500669**



**[info@ekroofing.co.uk](mailto:info@ekroofing.co.uk) | [www.ekroofing.co.uk](http://www.ekroofing.co.uk)**



## **HYLAND BUILDERS LTD**

**Building, Roofing and Glazing Contractors**

**DOMESTIC, INDUSTRIAL AND COMMERCIAL - EXTENSIONS & ALTERATIONS  
SPECIALISTS FOR ALL YOUR BUILDING AND MAINTENANCE NEEDS  
Established 1974**

Flat Roof Specialists • Roof Repairs (strip & recovers) • Replacement Windows & Double Glazing • Drainage • Drives • Garden Walling • Paving (slab or block) • Fencing • Landscape Gardening • Plastering • Pebble Dashing • Pointing • Guttering & Fall-pipes • Painting & Decorating • Security • Services • UPVC, Facias & Cladding

**LEEDS CITY COUNCIL APPROVED - GRANT WORK - ALL WORK GUARANTEED**

**24 HOUR EMERGENCY SERVICES FOR GLAZING, PLUMBING & BLOCKED DRAINS**

*(The impossible we can do immediately, miracles take a little longer)*

**FOR ADVICE AND PERSONAL ATTENTION CALL**

**07710 099596 or 01937 572596 (24hrs)**

**10 ROSE CROFT, EAST KESWICK, LEEDS, LS17 9HR**



## Your local Financial Planning Consultant based in your area

**Ian Greenhalgh**  
DipPFS

Book your no obligation initial consultation:

☎ 07495 762735

✉ [ian.greenhalgh@quilterfa.com](mailto:ian.greenhalgh@quilterfa.com)

Quilter  
Financial  
Advisers

The Complete Funeral Service ~ Est. 1808

## G.E. HARTLEY & SON

Private Chapels Of Rest ~ 24 Hour On-Call Service  
Monumental Masonry ~ Pre-paid Funeral Plans

[www.gehartley.co.uk](http://www.gehartley.co.uk)

WETHERBY  
66 Westgate  
LS22 6LJ  
01937 588888

GARFORTH  
62a Main Street  
LS25 1AA  
0113 286 2980



**HEATING OIL DIRECT TO YOUR HOME**  
STORAGE TANK SUPPLY AND INSTALLATION  
EMERGENCY SERVICE & SATURDAY DELIVERY

**WWW.TATEOIL.CO.UK**  
**CALL: 08456 43 44 43**

LEEDS ROAD, OTLEY, W. YORKS, LS21 3BB

## Gillbeck Associates Ltd

### ACCOUNTING / BOOKKEEPING / TAX & PAYROLL

A professional service at very  
affordable rates - let us save you  
money!

**01937 585432**

[enquiries@gillbeck.co.uk](mailto:enquiries@gillbeck.co.uk)



## J. A. KELLY

INDEPENDENT FUNERAL DIRECTORS

We understand that the loss of a loved one is a deeply personal and challenging experience. As a local, family-run business, we are proud and dedicated to providing dignified and professional funeral arrangements that honour the wishes of the deceased and support the bereaved of Leeds and the surrounding areas.



Direct cremation service *from* £999  
Attended cremation service *from* £2720  
Burial service *from* £2909

★★★★★

**0113 873 0212**

[info@jakellyfunerals.co.uk](mailto:info@jakellyfunerals.co.uk)

[www.jakellyfunerals.co.uk](http://www.jakellyfunerals.co.uk)

2 Barwick Road, Leeds, LS15 7QG



## Adrian Wood Boston Spa Garage

**SERVICING CARS LOCALLY FOR OVER 30 YEARS**



Moor End, Boston Spa, Wetherby LS23 6ER

**Tel: 01937 844400**

## Dalby Landscapes

Landscape gardening, fencing & general  
garden maintenance • Weekly,  
fortnightly or one-off garden tidy • All  
aspects of tree services undertaken

Nigel Dalby **07752 586566**

Ben Dalby **07840 442628 / 01937  
574583**

[www.dalbylandscapes.co.uk](http://www.dalbylandscapes.co.uk)





LANDSCAPING SERVICES LTD  
landscape & fencing contractors

Local, reliable and professional services for all  
aspects of hard and soft landscaping  
For more information and a FREE ESTIMATE call

**01937 579117**

jmaservicesltd@yahoo.co.uk  
www.jmalandscaping.co.uk



A space for your advert here

## GRAHAM LANDSCAPES

- Drives & Decking
- Fencing & Walls
- Gardens & Gates
- Patios, Pergolas & Paths
- Paving & Power Washing
- Resin Bound Gravel
- Turfing & Tidying

Free advice & estimates  
12 month guarantee  
£2 million liability cover

**01937 580607**  
**07752 093361**

*The award winning garden builders*



## BARDSEY

TREE SERVICES LTD

### TREE SURGEONS & ARBORICULTURAL CONTRACTORS

ALL ASPECTS OF TREE SURGERY & FELLING • HEDGE CUTTING/REMOVAL • STUMP  
GRINDING • SITE CLEARANCE FOR RESIDENTIAL & CONSTRUCTION INDUSTRY •  
WOODCHIP SUPPLIERS • TPO/CONSERVATION AREA CHECKS & FREE APPLICATIONS •  
TREE SURVEYS & REPORTS / FREE ESTIMATES • EMERGENCY CALL OUT • £10 MILLION  
PUBLIC LIABILITY INSURANCE

**01937 573689**

www.bardseytrees.co.uk  
info@bardseytrees.co.uk



## SARAH KAY HOLISTICS

Reflexology ▪ Zone Face Lift ▪ Massage

07940 769352

AoR registered (Est. 2018)

## Hair by Kathryn

MOBILE HAIRDRESSER

07767 692052

## EKOne HAIRDRESSING

BESPOKE COLOURING & RESTYLING



**STATE REGISTERED  
MASTER  
CRAFTSMAN**

Professional salon  
environment, with  
off road parking

Call **Elaine** on

**01937 572550 /  
07762 024229**

3 The Grove,  
East Keswick



## nest home clean & companionship

*Professional & dedicated cleaning  
Available for regular, weekly or  
fortnightly cleans*

We can also help with tasks such as  
shopping, light meal preparation &  
appointment making

07723 128 771

nesthomecleanandcompanionship@gmail.com



## Wood View

SPORTS MASSAGE & HOLISTIC THERAPIES

Relax | Renew | Revive



Sports Massage  
Therapeutic Massage  
Aromatherapy Massage  
Pregnancy Massage  
Reflexology



WEBSITE



**Practicing from Hetchell Court in Bardsey  
Weekdays 9am to 9pm and Saturday 9am to 12pm**

**07590 950083**

**www.woodviewtherapies.co.uk**

**3 Hetchell Court, Bardsey, Leeds LS17 9BY**



## COUNSELLING - ADRIENNE CREW (MBACP)

Registered member of the British Association  
for Counselling & Psychotherapy

Counselling can provide valuable support when there is a crisis.

I can offer help with the following;

**RELATIONSHIPS ■ COUPLE COUNSELLING ■ DEPRESSION  
BEREAVEMENT ■ WORK LIFE BALANCE ■ ANXIETY ■ ANGER ISSUES  
■ LOW SELF-ESTEEM**

**T: 07715 267676 / E: [adrienne.e2@gmail.com](mailto:adrienne.e2@gmail.com)**

**[www.adriennecrew.co.uk](http://www.adriennecrew.co.uk)**

## NEED HELP WITH A COMPUTER / SMARTPHONE / TABLET / TV?

I come to you ■ Windows setup & support ■ email help ■ PC tune up ■ one-to-one tuition ■ PC/laptop ■ data backup & transfer ■ smartphone/tablet/printer/broadband/wi-fi support

**Thinking of buying a new computer/smartphone/tablet/printer/TV?**

Speak to me first for advice on buying the right item at the right price.

**Improve your online security**

Have you been hacked/scammed? Forgotten passwords?

**Paying too much for broadband/TV/landline/mobile contract?**

I may be able to get you a better deal. You could save BIG money £££

Need help with TV setup/retune or getting Netflix, Amazon Prime, Disney+, Paramount+, catchup TV (BBC iPlayer/ITV/C4, etc.)? Setup and learn to use Amazon Echo, Fire Stick, Kindle, WhatsApp, Skype, Zoom and much more besides.

Contact **Lee Goodman** for more information (Est. 2009).

**[lee\\_gee66@hotmail.com](mailto:lee_gee66@hotmail.com) / 01132 698466 / 07941 281558**

## THORNER FLOORING SERVICES

ALL TYPES OF FLOOR COVERINGS  
SUPPLIED AND FITTED

**CARPETS • VINYLs • WOOD**

**THE MOBILE SHOWROOM**

**1000's OF SAMPLES BROUGHT TO YOUR DOOR**



**8 St. Peter's Garth, Thorner, Leeds, LS14 3EE  
Tel: 0113 289 2344 Mobile: 07774 171744**

**[craig@thornerflooring.co.uk](mailto:craig@thornerflooring.co.uk)  
[www.thornerflooring.co.uk](http://www.thornerflooring.co.uk)**



# Buywell interiors

Fitted Kitchens, Bedrooms and Home Office Solutions



## BUY LOCAL - BUY BRITISH - BUY WELL

UNIT 155, AVENUE B,  
THORP ARCH ESTATE, LS23 7BJ

Tel: 01937 844288  
[www.buywellinteriors.co.uk](http://www.buywellinteriors.co.uk)



## DO YOU KNOW HOW MUCH YOUR PROPERTY IS WORTH?





For a FREE instant valuation  
simply scan this QR code

or visit

[www.furnellresidential.co.uk](http://www.furnellresidential.co.uk)



*Your home, our business*

t: 01937 574685  

The Hayloft, Cornmill Lane, Bardsey, Leeds LS17 9EQ





**GEORGE'S PET PALS**  
YOUR PET'S HAPPINESS IS  
OUR NO 1 PRIORITY

FULLY INSURED, CANINE FIRST AID TRAINED

SERVICES INCLUDE:

DOG WALKING	PUPPY CARE
1HR MIXED GROUP WALKS	CAT CARE
30MIN SOLO WALKS	HORSE CARE
PET SITTING	SMALL ANIMALS



CONTACT CLAIRE ON 07999 796472 TO BOOK IN

CHECK OUT GEORGE'S PET PALS FULL LIST OF SERVICES AND PRICES AT  
[WWW.GEORGESPETPALS.CO.UK](http://WWW.GEORGESPETPALS.CO.UK)  

OR CONTACT [info@georgespetspals.co.uk](mailto:info@georgespetspals.co.uk) FOR MORE INFORMATION



**Local Electrician**  
**LS22 Electrical Ltd**  
(Est. 1982)



- ✓ All aspects of domestic electrical installations
- ✓ New installations, alterations & repairs
- ✓ Telephone & computer cable installations & repairs
- ✓ No job too small!!!
- ✓ Competitive, efficient, tidy & friendly service

For advice or to arrange a visit call Geoff on;

**07791 844305**

E: [service@ls22electrical.co.uk](mailto:service@ls22electrical.co.uk)



**S.P. Harrison**  
**Painting & Decorating**  
Quality paperhanging & painting 

**01132 813956 / 07961 181848**

**ANTHONY SHORTALL**

Your local  
**PAINTER & DECORATOR**

City & Guilds Qualified  
Apprentice Trained

No job too small or too large

**01133 930960 / 07711 706679**

**GREYSTONES - STAITHES**

Furnished holiday home to rent in the heart of the old village on the picturesque East Coast.

**Sleeps 9 in 5 bedrooms (1 En Suite)**

Ideal for long weekends, midweek breaks and family holidays.

**07850 704344**

[www.greystones-staithes.co.uk](http://www.greystones-staithes.co.uk)

**SAM WATTS**

ALL PLUMBING INSTALLATIONS  
AND REPAIRS

Free estimates ▪ No call out charges ▪ No job too small ▪ City & Guilds certified

**07759 060709**



**LOCKFARR LOCKSMITH & CCTV**

**Norman Farrar**

MPL NATIONALLY TRAINED LOCKSMITH  
FULLY TRAINED CCTV INSTALLER

**07760 111418**

[norman\\_farrar@hotmail.com](mailto:norman_farrar@hotmail.com)  
Find us on Facebook – Lockfarr Locksmith and CCTV

Diary Dates			
DECEMBER		JANUARY	
7	Bardsey Gardeners Wreath Making, 10am	13	Callister Café, 12.45pm
9	Callister Café, 12.45pm	13	EK WI, 2pm
9	EK WI, 2pm	14	Bardsey-cum-Rigton WI, 7.30pm
9	Golden Plover Carol Service, 7pm	15	Bible Study Group, 2.30pm
10	Bardsey-cum-Rigton WI, Christmas Party	15	EK Flower Club, 1.30pm
11	EK History Group Talk, 7.30pm	18	EKMC Carols Around the Crib, 6pm
17	Bardsey Parish Council, 7pm	20	EK Parish Council, 7.30pm
18	EK Flower Club, 1.30pm	21	Bardsey Parish Council, 7pm
16	EK Parish Council, 7.30pm	29	EKMC Souper Thursday, 12 noon
22	A Christmas to Believe In, 6.45pm	29	EK History Group Talk, 7.30pm
		30	Cinema Night, 7pm

The Village News magazine is published bimonthly by the PCC of the Parish of Bardsey with East Keswick. We welcome contributions from our village communities, relating to news, events and topics of interest, for possible inclusion in the magazine, without charge, which would be published at the discretion of the editorial team. Please send entries for inclusion to [bardseypcc@gmail.com](mailto:bardseypcc@gmail.com)

**The copy deadline for the February - March '26 edition is Sunday 18 January.**

If you missed previous editions you can still find them on the parish website [www.bardseyekparish.com/village-news](http://www.bardseyekparish.com/village-news)

#### **The Parish of Bardsey with East Keswick**

Currently in vacancy

#### **All Hallows Church**

Church Lane, Bardsey, LS17 9DH  
Churchwarden: Jacquie Earnshaw  
01937 574877

#### **Saint Mary Magdalene Church**

Moor Lane, East Keswick, LS17 9ES  
Churchwarden: Fiona Siekierowski  
01937 572836

#### **Parish Administrator: Catriona Brent**

Parish Office  
Callister Hall, Woodacre Lane  
Bardsey, Leeds, LS17 9DG  
T: 01937 574273  
E: [bardseyparishchurch@gmail.com](mailto:bardseyparishchurch@gmail.com)

**[www.bardseyekparish.com](http://www.bardseyekparish.com)**

Registered charity Number 1134014

This magazine is printed on fully recyclable paper, by an ISO 14001:2015 certified printer using FSC (Forest Stewardship Council®) paper stock.

